

# Panasonic®

## 使用说明书

## Operating Instructions

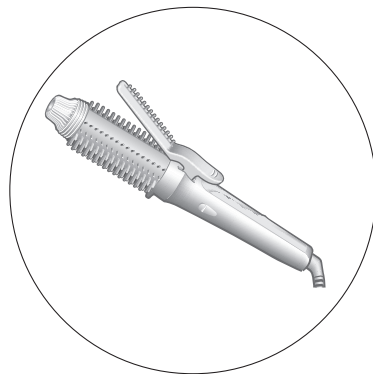
### （家用）卷烫梳

### (Household) Styling Brush Iron

型号 EH-HT40

Model No.

中文.....	3
English.....	17





## 使用说明书 (家用) 卷烫梳

型号 EH-HT40

### 目录

安全注意事项 .....	4	使用后 .....	15
部件名称 .....	8	清洁 .....	15
使用前 .....	9	规格 .....	15
使用卷烫梳 .....	9	故障排除 .....	16
如何定型 .....	10		

感谢您购买这款Panasonic产品。

在使用本产品前，请仔细阅读本说明书并妥善保管，以备将来参考。

## 安全注意事项

为减少触电、受伤、火灾、死亡以及财产损坏的危险，请务必遵守以下安全注意事项。

### 标志说明

以下标志用于对因无视标志说明和使用不当而导致的危险、伤害和财产损失的程度进行分类和描述。



### 警告

表示可能会导致重伤或死亡的潜在危险。



### 注意

表示可能会导致轻伤或财产损失的危险。

以下标志用于对需要遵循的说明的种类进行分类和描述。



此标志用于提醒用户注意禁止采取的操作步骤。



此标志用于提醒用户注意为了安全操作本产品而必须遵循的操作步骤。



## 警告



**请勿存放在儿童和婴幼儿的接触范围之内。请勿让他们使用本产品。**

- 否则可能导致烫伤、触电或受伤。



**请勿擅自改装、拆解或维修。**

- 否则可能因运转异常而导致着火或人身伤害。  
请联系授权的维修中心进行维修。



**使用时请注意勿超出家用电源插座或接线的额定功率。**

- 在一个家用电源插座上连接太多插头而超出额定功率，可能会因过热而引发火灾。



**请勿损坏或改装、或用力弯曲、拉拔或扭曲电源线。**

另外，**请勿在电源线上放置重物或挤压电源线。**

- 否则可能因短路而引发触电或火灾。



**请勿在使用时缠绕电源线。**

- 否则可能导致火灾或触电。



**存放时请勿将电源线缠绕在直发器主体上。**

- 否则可能导致电源线因负载而断线，或由于短路而引发火灾。



**当插头或电源线损坏或发烫时，请勿使用。**

- 否则可能因短路而导致触电、受伤或火灾。



## 警告



当插头没有在家用电源插座上插紧时，切勿使用本产品。

- 否则可能因短路而导致触电、受伤或火灾。



请勿用湿手将插头插入家用电源插座，或从电源插座上拔下插头。

- 否则可能导致触电或受伤。



请勿用湿手操作本产品。

- 否则可能因短路而引发触电或火灾。



请勿在本产品接通电源时，或使用后卷筒仍很烫时，使其处于无人看管的状态。

- 否则可能导致火灾、灼伤、附近物品变色或变形。



请勿将本产品存放在浴室或湿度较大的位置。也不要将本产品放置在可能溅到水的位置（如卫生间台面）。

- 否则可能会导致触电或火灾。



请勿在易燃物品（如酒精、汽油、稀释剂、喷雾剂、护发产品、指甲油去除剂）附近使用本产品。

- 否则可能引发爆炸或火灾。



使用本产品时，请勿在直发器主体或头发上使用发胶或易燃的美发护发产品。

- 否则可能导致触电、烫伤或火灾。



请勿将本产品放入水中或往产品上浇水。

请勿在水源附近使用本产品。

请勿在浴缸、淋浴间、洗脸盆或其它盛水器皿附近使用本产品。

- 否则可能会导致触电或火灾。



本产品上的该标志表示“请勿在水源附近使用本产品”。

如果发生异常和故障，请立即停止使用并拔下插头。

- 否则可能导致火灾、触电或受伤。



<异常或故障情况>

• 主装置偶尔停止，或电源线或插头异常发烫。

• 主装置变形或发出烧焦的味道。

- 请立即向授权的维修中心请求检查或维修。



将插头完全插入到插座中。

请务必确保本产品的工作电压符合其额定电压。

- 否则可能导致火灾或触电。



请定期清洁插头，防止灰尘积聚。

- 否则可能因潮湿造成绝缘故障，从而引发火灾。

请拔下插头，然后用干布擦拭。

## 警告

**!** 在浴室内使用本产品时，使用后拔下插头，因为即使本产品断电后，接近水仍存在危险。

- 否则可能导致事故或受伤。

**!** 为了保障您的安全，建议在浴室供电的电气回路中安装一个额定漏电动作电流不超过**30 mA**的漏电保护装置 (RCD)。向RCD安装商咨询。

- 否则可能导致事故或受伤。

**!** 本品不宜供肢体、感官或精神上有残疾者、缺乏经验和知识者（包括儿童）使用，除非有人对此类人加以监督或者对本品的使用加以指导，且对使用者的安全能承担责任。请避免儿童将本产品视为玩具，从而引发危险。

- 否则可能导致事故或受伤。

**!** 如果电源线损坏，为避免危险，必须由制造厂或其维修代理或类似的专职人员来更换。

- 否则可能导致事故或受伤。

**!** 请妥善处理本产品的包装袋，使其远离婴幼儿。

- 否则可能导致婴幼儿窒息等意外发生。

## 注意

**!** 存放时，请勿缠绕电源线。

- 否则可能导致电源线因负载而断线，或由于短路而引发火灾。

**!** 请勿跌落或受到冲击。

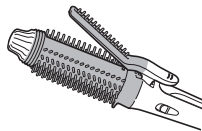
- 否则可能导致触电或着火。

**!** 请勿用于儿童或婴儿。

- 否则可能会造成烫伤。

请勿在使用中或刚使用后触碰阴影部分，因为这些地方会很烫。

- 否则可能会造成烫伤。



**!** 请勿使加热部分接触皮肤（耳朵、额头、后颈部等）。

- 否则可能会造成烫伤。

**!** 切勿在发夹压紧的情况下靠近脸部。

- 在脸旁打开发夹可能会导致烫伤或受伤。

**!** 请勿在头发上有烫发液时使用本产品。

- 否则可能导致头发或皮肤问题。

## ⚠ 注意

⊘ 请勿将本产品用于除打理您自己的头发以外的任何其它用途。（请勿用于宠物等。）

- 否则可能会造成烫伤。

⊘ 在同一束头发上使用本产品切勿超过2次。发束在梳子上的停留时间切勿超过10秒钟。

- 否则，可能会烫伤您的头发。

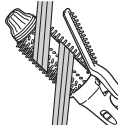
绕在卷筒上的发束切勿超过1.5圈，且切勿卷到发根。

除正被卷起的发束部分以外，切勿将梳子再用于头发的其他部分。

切勿如图所示斜向卷起和展开头发。

⊘ 切勿一次卷起大束头发。

- 否则可能造成头发打结，导致头发损坏或烫伤。



⚠ 使用后，请从家用电源插座上拔下插头。

- 否则可能会因绝缘老化造成的漏电而引发烫伤、触电或火灾。

请将本产品放在平坦的表面，并远离可燃物或受热后易碎的物体。

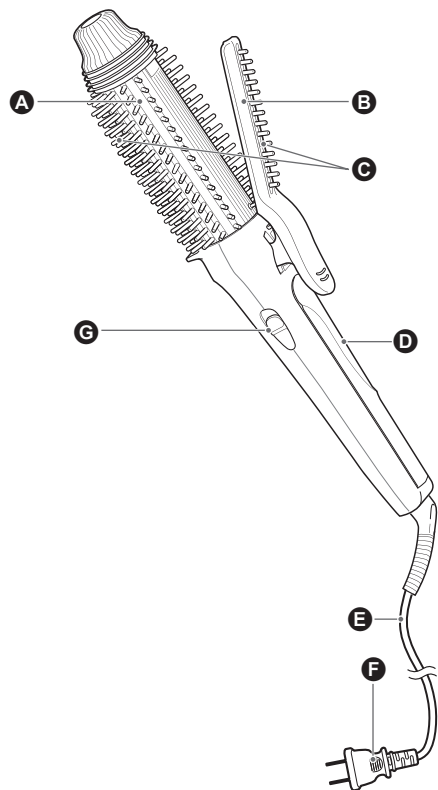


- 否则可能导致火灾、烫伤、附近物品变色或变形。



拔下插头时，请捏住插头，不要拉扯电源线。

- 否则可能导致电源线断线，并可能因电源短路而导致灼伤、触电或火灾。



- Ⓐ 卷筒
- Ⓑ 发梢定型夹（发夹）
- Ⓒ 梳齿
- Ⓓ 电源指示灯
- Ⓔ 电源线
- Ⓕ 电源插头
- Ⓖ 电源开关（[0]、[1]、[2]）  
（设备不会自动关闭。）

## 使用前

- 1 梳理头发。**  
必须顺着您想要的发型方向梳理头发。



- 2 略微弄湿头发。**  
请使用定型产品、水或蒸烫的毛巾轻轻且均匀弄湿头发。
- 过湿的头发无法很好定型，因此要确保头发仅微湿。



### ►注意

- 头发可能会因卷筒产生的热量而产生蒸汽。
- 切勿使用成分与烫发液（巯基乙酸、半胱氨酸）相类似的定型产品，否则可能损伤头发。

### 关于直发产品

- 使用完家用直发烫发液之后，切勿立即使用本卷烫梳。否则，可能会损伤你的头发。（使用直发烫发液3-4天后，可使用本卷烫梳。在美容院烫完发3-4天后，也可使用本卷烫梳。）

### 关于染发产品

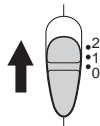
- 染发会损伤头发。染发后，请等待2或3天方可使用本卷烫梳。如果采用暂时性染发剂，请在使用前将其洗净并弄干头发。
- 染发后需要一段时间才能稳定着色。对于暂时性染发剂的情况，如果染发剂未完全洗净则会弄脏梳子。此外，不能卷烫湿发。

## 使用卷烫梳

- 1 将插头插入家用电源插座。**
- 2 将电源开关滑到[1]或[2]打开电源。**

电源指示灯点亮红色，且卷烫梳将加热约1分钟。

- 第一次使用卷烫梳时，或如果担心烫伤，请将电源开关设置到[1]。



温度	卷发定型
[2]: 约180 °C	卷度分明
↑↓	↑↓
[1]: 约140 °C	卷度自然

- 选择适合自己头发类型和想要卷成何种形状的温度。

## 使用卷烫梳（续）

## 3 定型头发：



▶ “用梳子梳直头发”（第10页）



▶ “卷烫技巧（适合大卷度）”  
（第11页）



▶ “卷烫技巧（适合卷度分明）”  
（第12页）



▶ “从中段开始卷发”（第13页）



▶ “增加头顶蓬松度”（第14页）



▶ “定型刘海（呈现柔和效果）”  
（第14页）

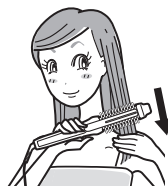
▶ “定型两侧头发”（第14页）

## 如何定型

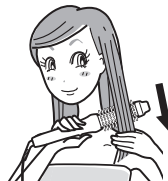
## 用梳子梳直头发

## &lt;不使用发夹&gt;

**1** 将梳子放在一束头发的外侧。  
用另一只手拿住该部分头发，从发根开始，以均匀的速度向下梳头发。



**2** 将梳子放在该部分头发的内侧。  
使用步骤1的方法向下梳头发。

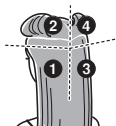


## 💡 最佳定型效果的技巧

**1** 使用梳子梳理头发。

**2** 将头发分开并固定为图中所示的几个部分。

• 如果您的头发浓密，将头发分成更小的区块可以更方便地定型。



**3** 从头后部①至②开始定型 [然后③至④]。

## 卷烫技巧（适合大卷度）

### <不使用发夹>

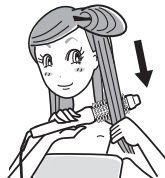
#### 1 抓起一束约5厘米宽的头发。



#### 2 使用卷筒梳理头发。

用另一只手拿住头发，以均匀的速度从发根向下梳理。

- 向内卷：在头发的内侧梳理
- 向外卷：在头发的外侧梳理



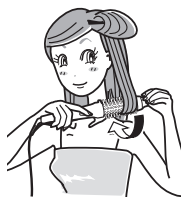
#### 要点

在卷发之前用卷烫梳梳理头发可以加热头发，能使发卷保持更好。

#### 3 发卷成型。

按您想要头发卷曲的方向转动梳子，从发梢起将头发绕在卷筒上1.5圈。

- 向内卷：在头发的内侧梳理
- 向外卷：在头发的外侧梳理



#### 4 将梳子保持不动约7秒钟。

如果发卷无法保持，请重复步骤3。

- 梳子保持在一个地方切勿超过10秒钟。



#### 5 松开梳子上的头发。

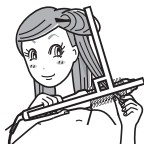
以卷发时的相同角度、相反方向转动梳子松开头发。

#### 6 剩余的头发按照步骤1-5操作。

### 防止头发缠结

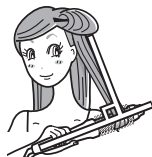
#### 卷发时

取更少量的一束头发，卷烫梳与要卷烫的头发保持垂直，卷住卷筒的头发不要超过1.5圈。



#### 拿开时

尽可能远离头部握住卷筒，并保持梳子与头发垂直，缓慢松开头发。



- 如果头发夹在梳子中，请先将电源开关设定至[0]，然后拔掉卷烫梳的电源插头。解开头发时，切勿试图一次全部拉出。而应该分小部分松开头发。

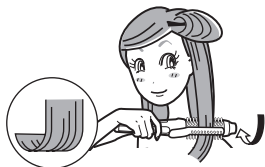
## 如何定型（续）

### 卷烫技巧（适合卷度分明）

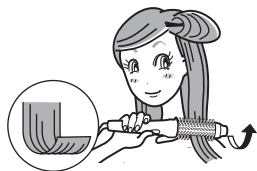
#### <使用发夹>

**1 抓起一束约5厘米宽的头发。**  
确保发束夹入发夹。

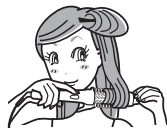
**2 固定发梢并卷曲。**  
用发夹固定发梢，并将头发卷绕在卷筒上1.5圈。  
**向内：发夹面朝外**



**向外：发夹面朝自己**



**3 将梳子保持不动约7秒钟。**  
如果发卷无法保持，请重复步骤2。  
• 梳子保持在一个地方切勿超过10秒钟。



**4 松开梳子上的头发。**  
以卷发时的相同角度、相反方向转动梳子松开头发。松开发夹放开头发。



**5 剩余的头发展按照步骤1-4操作。**

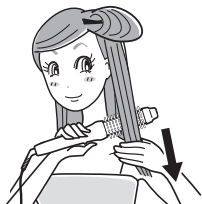
## 从中段开始卷发

<不使用发夹>

**1** 抓起一束约5厘米宽的头。

**2** 使用卷筒梳理头发。

将一部分头发握在手中，使用卷筒上的梳子梳理头发。

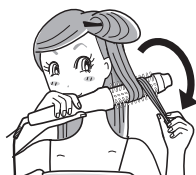


### 要点

在卷发之前用卷烫梳梳理头发可以加热头发，能使发卷保持更好。

**3** 向下到达头发中段部位时，将头发卷绕住卷筒。

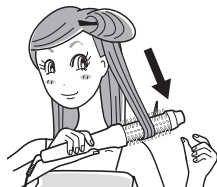
当梳子向下到达头发中段时，用手拿住此部分头发的发梢，并用这部分头发卷绕卷筒一圈。



**4** 向下滑到发梢。

向下缓慢滑动梳子，在碰到手之前让梳子一直滑到发梢。

• 如果发卷无法保持，请重复步骤3-4。



**5** 剩余的头发按照步骤1-4操作。

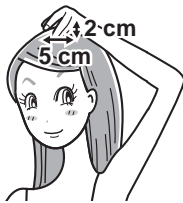
## 如何定型（续）

### 增加头顶蓬松度

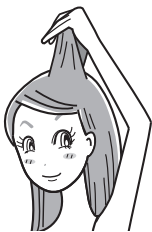
#### <不使用发夹>

- 1 抓起想要做蓬松造型处的一束头发。

这些部分应约5厘米宽、2厘米厚。



- 2 将梳子放在这部分头发的内侧，靠近发根。



- 3 从发根转动梳子，然后朝发梢方向缓慢下滑约10厘米。



### 定型刘海（呈现柔和效果）

#### <使用发夹>

- 1 从额头撩起刘海，用发夹夹住发梢。

发夹



- 2 朝发根向内转动卷筒。



- 3 松开梳子上的头发。  
想要更自然，可尝试不用发夹。

### 定型两侧头发

#### <使用发夹>

- 1 如右图所示，将卷烫梳保持直立卷住发束。发夹必须面朝自己。

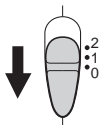


- 2 朝外侧方向开始卷发。

- 3 松开梳子上的头发。

## 使用后

- 1 将电源开关滑到[0]关闭卷烫梳电源。



- 2 从家用电源插座上拔下插头。

## 清洁

请在卷烫梳已冷却且插头已从家用电源插座上拔下后再进行清洁。

- 若要清洁卷烫梳，请将布浸在肥皂水中，拧干后擦拭。
- 请用棉签清除梳子上的灰尘或头发。
- 请勿使用洗手/洗澡肥皂、酒精、稀释剂、汽油或去除剂。  
否则可能导致卷烫梳表面出现裂痕或褪色。
- 切勿让美发产品或化妆品残留在卷烫梳上。  
否则可能导致塑料老化并会产生裂缝或褪色。

## 规格

产品名称	卷烫梳
产品型号	EH-HT40
原产地	泰国
生产日期	请见商品上刻印
执行标准	GB4706.1, GB4706.15, GB4343.1, GB17625.1
额定电压	220 V ~ 50 Hz
额定功率	41 W
卷筒温度	[2]: 约 180 °C
	[1]: 约 140 °C

本产品仅适合家庭使用。

## 故障排除

问题	可能原因	解决方法
使用期间，卷烫梳散发出燃烧的气味。	▶ 灰尘、污垢、头发定型产品等粘附在卷筒、梳子或发夹上。 ▶	清洁卷烫梳，除去所有附着物。（第15页）
电源线弯曲或转动时，电源指示灯忽亮忽灭。	→	请向授权的维修中心请求检查或维修。
即使电源指示灯亮着，卷筒也不加热。	→	

如果仍无法解决问题，请咨询购买的销售店或联系Panasonic授权的维修中心进行维修。

## Contents

<b>Safety precautions.....</b>	<b>18</b>	<b>After use .....</b>	<b>29</b>
<b>Parts identification .....</b>	<b>22</b>	<b>Cleaning .....</b>	<b>29</b>
<b>Before use .....</b>	<b>23</b>	<b>Specifications .....</b>	<b>29</b>
<b>Using the styling brush iron.....</b>	<b>23</b>	<b>Troubleshooting .....</b>	<b>30</b>
<b>How to style .....</b>	<b>24</b>		

Thank you for purchasing this Panasonic product.

**Before operating this unit, please read these instructions completely and save them for future use.**

## Safety precautions

To reduce the risk of injury, loss of life, electric shock, fire, and damage to property, always observe the following safety precautions.

### Explanation of symbols

The following symbols are used to classify and describe the level of hazard, injury, and property damage caused when the denotation is disregarded and improper use is performed.



## WARNING

Denotes a potential hazard that could result in serious injury or death.



## CAUTION

Denotes a hazard that could result in minor injury or property damage.

The following symbols are used to classify and describe the type of instructions to be observed.



This symbol is used to alert users to a specific operating procedure that must not be performed.



This symbol is used to alert users to a specific operating procedure that must be followed in order to operate the unit safely.



## WARNING



**Do not store within the reach of children or infants. Do not let them use the appliance.**

- Doing so may cause burn, electric shock, or injury.



**Never modify, disassemble, or repair.**

- Doing so may cause ignition or injury due to abnormal operation.

Contact an authorized service center for repair.



**Do not use in a way exceeding the rating of the household outlet or the wiring.**

- Exceeding the rating by connecting too many plugs to one household outlet may cause fire due to overheating.



**Do not damage or modify, or forcefully bend, pull, or twist the cord.**

**Also, do not place anything heavy on or pinch the cord.**

- Doing so may cause electric shock or fire due to a short circuit.



**Do not use with the cord bundled.**

- Doing so may cause fire or electric shock.



**Do not wrap the cord around the main body when storing.**

- Doing so may cause the wire in the cord to break with the load, and may cause electric shock or fire due to a short circuit.



**Do not use when the plug or cord is damaged or hot.**

- Doing so may cause burn, electric shock, or fire due to a short circuit.



## WARNING



**Never use the appliance if the plug fits loosely in a household outlet.**

- Doing so may cause burn, electric shock, or fire due to a short circuit.



**Do not connect or disconnect the plug to a household outlet with a wet hand.**

- Doing so may cause electric shock or injury.



**Do not use the appliance with a wet hand.**

- Doing so may cause electric shock or fire due to a short circuit.



**Do not leave the appliance unattended with the power connected or after use while the Barrel is still hot.**

- Doing so may cause fire, burn, or discoloration or deformation of objects nearby.



**Do not store the appliance in a bathroom or location with high humidity. Also, do not place in a location where water may spill (such as top of a vanity).**

- Doing so may cause electric shock or fire.



**Do not use in proximity of flammable materials (such as alcohol, benzine, thinner, spray, hair care product, nail polish remover).**

- Doing so may cause an explosion or fire.



**Do not apply hair spray or flammable hair product to the main body or hair while using the appliance.**

- Doing so may cause fire, electric shock, or burn.



**Do not immerse the appliance in water.**

**Do not use this appliance near water.**

**Do not use this appliance near bathtubs, showers, basins or other vessels containing water.**

- Doing so may cause electric shock or fire.



**This symbol on the appliance means “Do not use this appliance near water”.**

**Immediately stop using and remove the plug if there is an abnormality or malfunction.**

- Failure to do so may cause fire, electric shock, or injury.



**<Abnormality or malfunction cases>**

• **The main unit stops occasionally, or the cord or the plug is abnormally hot.**

• **The main unit is deformed or smells of burning.**

- Immediately request inspection or repair at an authorized service center.

**Fully insert the plug.**



**Always ensure the appliance is operated on an electric power source matched to the rated voltage indicated on the appliance.**

- Failure to do so may cause fire or electric shock.

**Regularly clean the plug to prevent dust from accumulating.**



- Failure to do so may cause fire due to insulation failure caused by humidity.

Disconnect the plug and wipe with a dry cloth.



## WARNING



**When the appliance is used in a bathroom, unplug it after use since the proximity of water presents a hazard even when the appliance is switched off.**

- Failure to do so may cause an accident or injury.



**For additional protection, the installation of a residual current device (RCD) having a rated residual operating current not exceeding 30 mA is advisable in the electrical circuit supplying the bathroom. Ask your installer for advice.**

- Failure to do so may cause an accident or injury.



**This appliance is not intended for use by persons (including children) with reduced physical, sensory or mental capabilities, or lack of experience and knowledge, unless they have been given supervision or instruction concerning use of the appliance by a person responsible for their safety. Children should be supervised to ensure that they do not play with the appliance.**

- Failure to do so may cause an accident or injury.



**If the supply cord is damaged, it must be replaced by the manufacturer, its service agent, or similarly qualified persons in order to avoid a hazard.**

- Failure to do so may cause an accident or injury.



**Properly dispose the package of the appliance, keep the package away from infants.**

- Failure to do so may cause suffocation of infants from happening.



## CAUTION



**Do not store the cord in a twisted state.**

- Doing so may cause the wire in the cord to break with the load, and may cause electric shock or fire due to a short circuit.



**Do not drop or subject to shock.**

- Doing so may cause electric shock or ignition.

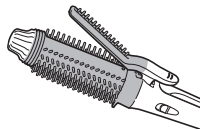


**Do not use on infants.**

- Doing so may cause burn.

**Do not touch the shaded areas when in use or right after use since they will be hot.**

- Doing so may cause burn.



**Do not let the heated section touch the skin (ears, forehead, neckline, etc.).**

- Doing so may cause burn.



**Do not bring near the face while the clip is shut.**

- Opening the clip near your face may cause burn or injury.



**Do not use the appliance with permanent wave liquids applied to your hair.**

- Doing so may cause hair or skin trouble.



**Do not use the appliance for any purpose other than the care of your own hair. (Do not use on pets, etc.)**

- Doing so may cause burn.



## CAUTION



**Do not use the appliance on the same bundle of hair for more than 2 times.**

**Do not keep bundles of hair on the brush for longer than 10 seconds.**

- Doing so may cause burn or damage your hair.

**Do not wrap bundles of hair around the barrel more than 1.5 times, and do not curl up to your roots.**

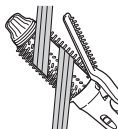
**Do not use the brush on any other section of hair other than the section currently being curled.**

**Do not curl and uncurl hair diagonally as shown in the diagram.**



**Do not curl large bundles of hair all at once.**

- Doing so may cause hair to become tangled resulting in damage, or burns.



**Disconnect the plug from the household outlet after use.**

- Failure to do so may cause burn, electric shock, or fire due to electrical leakage resulting from insulation deterioration.



**Place the appliance on a flat surface away from flammable objects or objects fragile to heat.**

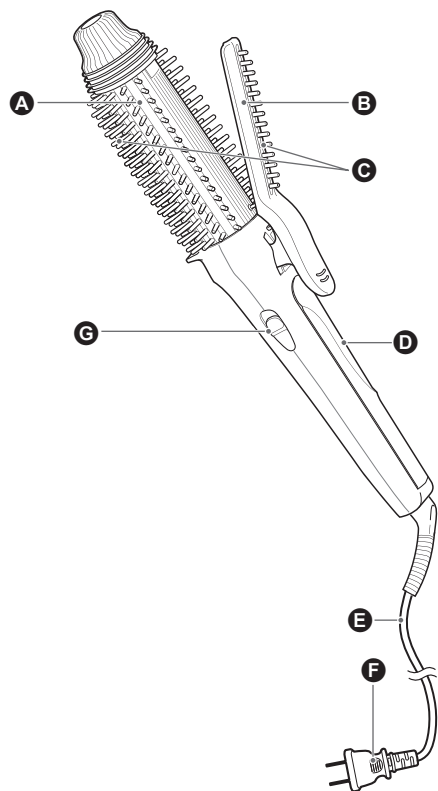
- Failure to do so may cause fire, burns or discoloration or deformation of surrounding objects.



**Disconnect the plug by holding onto it instead of pulling on the cord.**

- Failure to do so may cause the wire in the cord to break, and may cause burn, electric shock, or fire due to a short circuit.

## Parts identification



- A** Barrel
- B** Hair-Catching Clip (Clip)
- C** Brush
- D** Power Lamp
- E** Cord
- F** Plug
- G** Power Switch ([0], [1], [2])  
(The appliance will not turn off automatically.)

## Before use

### 1 Brush the hair.

Make sure it is detangled and lying in the direction of your desired style.



### 2 Slightly dampen the hair.

Lightly and evenly dampen the hair with styling products, water, or a steamed towel.

- Hair that is too damp will not style well so make sure the hair is only slightly damp.

#### ► Notes

- Hair may steam due to the heat generated from the barrel.
- Do not use styling products with ingredients similar to perm liquids (thioglycolic acid, cysteine) as they may damage the hair.



### About hair-straightening products

- Do not use the styling brush iron immediately after a home straight perm liquid is used. Doing so may damage your hair. (The styling brush iron may be used 3-4 days after a straight perm liquid. The styling brush iron may also be used 3-4 days after having your hair treated at a beauty parlor.)

### About dyeing products

- Dyeing places great stress on the hair. After dyeing please wait for 2 or 3 days before using the styling brush iron. If you use a temporary dye, wash it out and dry your hair before use.
- It takes some time after dyeing for the color to settle. In the case of the temporary dye, the dye can stain the brush if it is not fully washed out. Also, your hair cannot be curled when it is wet.

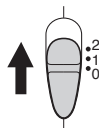
## Using the styling brush iron

### 1 Insert the plug into the household outlet.

### 2 Slide the Power Switch to [1] or [2] to turn on.

The power lamp will glow red and the styling brush iron will heat up in about 1 minute.

- When using the styling brush iron for the first time, or if you are worried about heat damage, set the Power Switch to [1].



Temperature	Curling Style
[2]: Approx. 180 °C	Stiff
↑	↑
[1]: Approx. 140 °C	Natural

- Select a temperature that suits your hair type and how you want the curls to turn out.

## Using the styling brush iron (continued)

### 3 Style your hair:



▶ "Straightening hair with the brush" (P.24)



▶ "Curling the Tips (for a large curl)" (P.25)



▶ "Curling the Tips (for a tight curl)" (P.26)



▶ "Curling from Middle Section" (P.27)



▶ "Increasing Volume on Top" (P.28)



▶ "Styling your Bangs (for a soft look)" (P.28)

▶ "Styling Sideswept Bangs" (P.28)

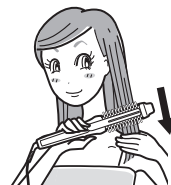
## How to style

### Straightening hair with the brush

#### <Without the Clip>

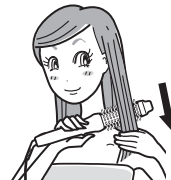
#### 1 Lay the brush on top of the section of hair.

Starting from the roots, slide the brush down at an even speed while holding the section of hair in place with your other hand.



#### 2 Hold the brush under the section of hair.

Slide the brush down using the method from Step 1.

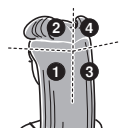


#### Tips for best styling results

#### 1 Use a brush to detangle the hair.

#### 2 Separate and secure the hair into the sections shown in the illustration.

- If you have thick hair, separating the hair into smaller sections will make styling easier.



#### 3 Start styling from the back of the head going from ① to ② [then ③ to ④].

## Curling the Tips (for a large curl)

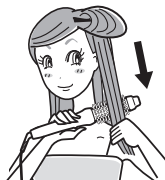
### <Without the Clip>

- 1 Gather a bundle of hair into a section 5 cm across.**



- 2 Use the barrel to brush.**  
Slide the brush down from the roots at an even speed while holding your hair with your other hand.

- To curl inwards: brush under the section
- To curl outwards: brush on top of the section

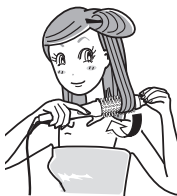


### POINT

Brushing your hair with the styling brush iron before curling it warms your hair and makes the curls hold better.

- 3 Shape the curls.**  
Rotate the brush in the direction you want the hair to curl, wrapping it around the barrel 1.5 times at the ends of the hair.

- To curl inwards: brush under the section
- To curl outwards: brush on top of the section



- 4 Hold the brush in place for approx. 7 seconds.**

If your curls do not hold, repeat Step 3.

- Do not hold the brush in one place for more than 10 seconds.



- 5 Undo hair from the brush.**

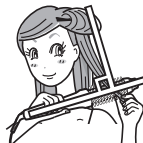
Undo the hair by rotating the brush at the same angle but opposite the direction used when making the curl.

- 6 Follow Steps 1-5 for the rest of your hair.**

### To prevent tangles

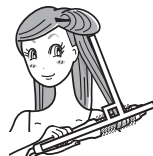
#### When curling

Take smaller bundles of hair and hold the iron perpendicular to the section of hair being curled, wrapping the hair around the barrel no more than 1.5 times.



#### When removing

Hold the brush as far away from your head as you can, and keeping the brush perpendicular to the section of hair, slowly undo the hair.



- If your hair gets caught in the brush, first set the Power Switch to [0], then unplug the styling brush iron. When untangling the hair, do not try to pull it all out at once. Instead, try removing the hair in small sections.

## How to style (continued)

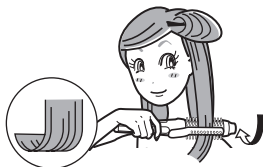
### Curling the Tips (for a tight curl)

#### <With the Clip>

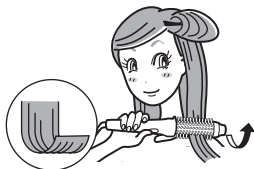
**1 Gather a bundle of hair into a section 5 cm across.**  
Make sure the bundle of hair fits into the clip.

**2 Secure the ends and twist.**  
Secure your ends with the Clip and wrap the hair around the barrel 1.5 times.

**Inwards: clip facing away from you**



**Outwards: clip facing toward you**



**3 Hold the brush in place for approx. 7 seconds.**  
If your curls do not hold, repeat Step 2 again.

- Do not hold the brush in one place for more than 10 seconds.



**4 Undo hair from the brush.**  
Undo the hair by rotating the brush at the same angle but opposite the direction used when making the curl. Open the clip to remove the hair.



**5 Follow Steps 1-4 for the rest of your hair.**

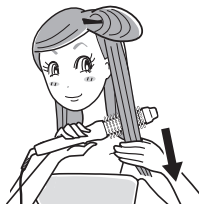
## Curling from Middle Section

<Without the Clip>

**1** Gather a bundle of hair into a section 5 cm across.

**2** Use the barrel to brush.

While holding a section in one hand, use the brush on the barrel to brush your hair.



### POINT

Brushing your hair with the styling brush iron before curling it warms your hair and makes the curls hold better.

**3** Once halfway down the section, wrap the hair around the barrel.

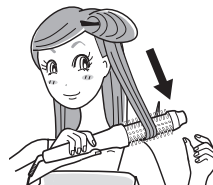
With the brush halfway down the section of hair, take the hand holding the ends of the section and use it to wrap the hair around the barrel once.



**4** Slide down to the end.

Slide the brush down slowly, letting go of the ends of your hair before the brush reaches your hand.

- If your curls do not hold, repeat Steps 3-4 again.



**5** Follow Steps 1-4 for the rest of your hair.

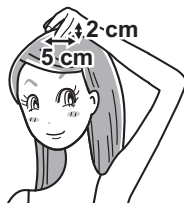
## How to style (continued)

### Increasing Volume on Top

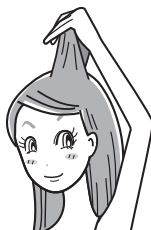
#### <Without the Clip>

- 1 Gather a bundle of hair where volume is desired.**

These sections should be about 5 cm across and 2 cm thick.



- 2 Place the brush behind the section of hair, close to your roots.**



- 3 Rotate the brush from the roots and slide slowly about 10 cm toward hair ends.**



### Styling your Bangs (for a soft look)

#### <With the Clip>

- 1 Hold your bangs away from your forehead and secure the ends with the Clip.**



- 2 Rotate the barrel in toward the roots.**



- 3 Undo the hair from the brush.**  
For a natural finish, try curling without the Hair Clip.

### Styling Sideswept Bangs

#### <With the Clip>

- 1 Hold a section of the hair with the iron held upright, as shown in the diagram to the right. Ensure that the clip is facing toward you.**

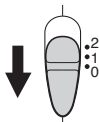


- 2 Start curling the hair away from your face.**

- 3 Undo the hair from the brush.**

## After use

- 1 Slide the Power Switch to [0] to turn off the styling brush iron.



- 2 Remove the plug from the household outlet.

## Cleaning

Clean the styling brush iron after they have cooled and with the plug removed from the household outlet.

- To clean the styling brush iron, soak a cloth in soapy water and wring out the extra water and wipe down.
- Remove dirt, such as dust or hair, from the brush with a cotton swab.
- Do not use hand/body soaps, alcohol, thinner, benzine or remover.  
Doing so may crack or discolor the surface of the styling brush iron.
- Do not leave residue from hair products or cosmetics on the styling brush iron.  
Doing so may deteriorate the plastic and cause cracks or discoloration.

## Specifications

Product name	Styling Brush Iron
Product model	EH-HT40
Place of origin	Thailand
Date of production	See engraving on the commodity.
Execution standard	GB4706.1, GB4706.15, GB4343.1, GB17625.1
Power source	220 V ~ 50 Hz
Power consumption	41 W
Barrel temperature	[2]: Approx. 180 °C
	[1]: Approx. 140 °C

This product is intended for household use only.

## Troubleshooting

Problem	Possible cause	Solution
During use, the styling brush iron gives off a burning smell.	▶ Dust, dirt, hair styling products, etc. are stuck to the barrel, brush or clip. ▶	Clean the styling brush iron to remove any adherents. (P.29)
The power lamp turns on and off when the cord is bent or rotated.	—————▶	Request inspection or repair at an authorized service center.
The barrel does not heat up even though the power lamp is on.	—————▶	

If problems still cannot be solved, contact the store where you purchased the unit or a service center authorized by Panasonic for repair.

[illegible]

## This image shows a single sheet of white paper with horizontal ruling lines. The lines are evenly spaced and run across the width of the page. There are no margins, text, or other markings on the paper.

保修证

保修条款

有关保修期内Panasonic商品的保修（无偿修理），从购入之日起开始实施。

1.保修期内的商品只可在Panasonic认定维修店进行保修；保修时，请出示本保修证及购机发票。

以下两点需特别注意：

- a.本保修证遗失后不再补发，请妥善保管。
  - b.本保修证仅限于中华人民共和国内有效(香港、澳门、台湾三地区暂不可使用)。
- 2.自购入之日起在以下期间内，在正常使用中发生故障的情况下进行保修。

- 整机（除商用产品）.....2年内无偿
- 整机（商用产品）.....6个月

3.属下列情况之一者，即使在保修期内，也不能以保修对待，但是可以实行收费修理：

- a.未按商品使用说明书要求使用、维护、保管而造成损坏的；
  - b.因不正确操作、电源不正常、破损（如：摔落等）而造成损坏的；
  - c.不经Panasonic认定维修店维修人员拆卸造成损坏的；
  - d.不能出示本保修证及有效购机发票的；
  - e.保修证上记录的信息与商品实物标识不符或者涂改的；
  - f.因不可抗力因素（如雷电、地震、火灾、水灾等）造成损坏的。
- 4.本保修条款只适用于消费者个人为生活消费需要而购买使用的场合，不适用于经营性等使用。

【商品信息】

商品名称：..... 产地：..... 泰国

商品型号：EH-HT40 制造编号：

【保修回执】以下回执是保修的重要依据，请勿自行撕下

商品型号：	EH-HT40	制造编号：	保修结算 4
商品型号：	EH-HT40	制造编号：	保修结算 3
商品型号：	EH-HT40	制造编号：	保修结算 2
商品型号：	EH-HT40	制造编号：	保修结算 1
商品型号：	EH-HT40	制造编号：	促销员留存

保修证管理编码印刷处:

【销售记录】此处所载信息仅于商品保修时作核对之用，本公司不对该信息进行收集记录。

销售店  
(盖章)

销售日期:..... 发票号码:.....

顾客姓名:..... 联系电话:.....

顾客地址:..... 邮 编:.....

销售店名称:..... 销售店电话:.....

销售店地址:..... 邮 编:.....

【维修记录】

维修店名称:..... 联系电话:..... 送修日:.....

维修店地址:..... 邮 编:.....

故障内容:..... 故障原因:.....

维修内容:.....

维修员签字:..... 交验日期:.....

维修店名称:..... 联系电话:..... 送修日:.....

维修店地址:..... 邮 编:.....

故障内容:..... 故障原因:.....

维修内容:.....

维修员签字:..... 交验日期:.....

维修店名称:..... 联系电话:..... 送修日:.....

维修店地址:..... 邮 编:.....

故障内容:..... 故障原因:.....

维修内容:.....

维修员签字:..... 交验日期:.....

本保修证因含有消费者个人信息，请妥善保管。

Panasonic客户咨询服务中心: 400-810-0781

Panasonic官方网站: <http://panasonic.cn>

松下电器(中国)有限公司

## 产品中有害物质的名称及含量

部件名称	有害物质						备注
	铅 (Pb)	汞 (Hg)	镉 (Cd)	六价铬 (Cr (VI))	多溴联苯 (PBB)	多溴二苯醚 (PBDE)	
塑料部件	○	○	○	○	○	○	
金属部件	×	○	○	○	○	○	
电源线、 内部配线	×	○	○	○	○	○	仅部分机型 含有该部件
电气回路组件	×	○	○	○	○	○	仅部分机型 含有该部件
玻璃、陶瓷	×	○	○	○	○	○	仅部分机型 含有该部件

本表格依据SJ/T 11364的规定编制。

○：表示该有害物质在该部件所有均质材料中的含量均在GB/T 26572规定的限量要求以下。

×：表示该有害物质至少在该部件的某一均质材料中的含量超出GB/T 26572规定的限量要求。



此标志标识产品的环保使用期限为10年，在环保使用期限内，产品中含有的有毒有害物质或元素在正常使用下不会发生外泄或突变，用户使用该产品不会对环境造成严重污染或对其人身、财产造成严重损害。产品过了环保使用期要废弃时，必须按国家相关法律法规进行合理处理。

制造商: 松下电子制造(泰国)株式会社  
Navanakorn Industrial Estate, Zone 3 No. 106 Moo 18, Khlong 1,  
Khlong Luang, Pathum Thani 12120, Thailand

进口商: 松下电器(中国)有限公司  
北京市朝阳区景华南街5号 远洋光华中心C座 3层、6层

原产地: 泰国