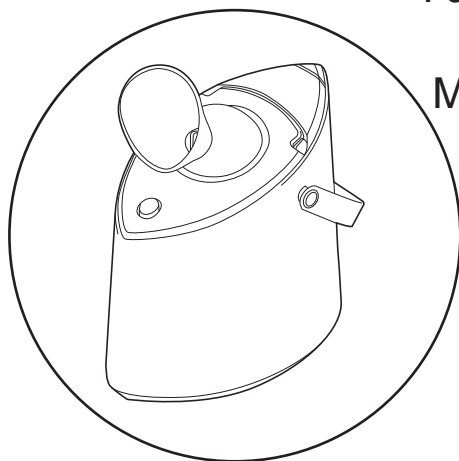


# Panasonic®

## 使用说明书 Operating Instructions

### 离子蒸汽美容器 Facial Ionic Steamer

型号 **EH2426**  
Model No.



中文	2
English	13

在使用前，请仔细阅读此说明书并妥善保管，以备将来参考。

Before operating this unit, please read these instructions completely and save them for future use.



## 安全注意事项

中文

为确保您正确使用本器具，请在使用前认真阅读所有安全注意事项。该安全注意事项能帮助您正确安全使用本器具，以免伤及您和他人以及带来财产损失。安全注意事项内容如下。

### 时刻遵守该重要安全注意事项之相关规定！

#### **警告：**

本信息表明可能发生的危险行为与情形，如不及时避免，严重时可能导致严重伤害甚至死亡。

#### **小心：**

本信息表明可能发生的危险行为与情形，如不及时避免，严重时可能导致人身伤害或财产损失。

#### **警告！**

- 不要在盛水的浴缸、淋浴、洗脸盆或其它器皿附近使用本器具。
- 不要在手湿的情况下使用本器具。不要把本器具放置或存放在靠近水槽、有水或其它盛有液体、高度潮湿的地方。不要在水附近使用本器具。
- 尽量避免在浴室使用本器具。若在浴室内使用时，使用后拔下插头，因为即使本器具断电后，接近水仍存在危险，为了保障您的安全，建议在浴室供电的电气回路中安装一个额定漏电动作电流不超过30mA的漏电保护装置(RCD)，向RCD安装商咨询。
- 如下人群应在使用前向有关医师咨询。
  - 急性疾病或恶性肿瘤患者、孕妇。
  - 过敏症和敏感性皮肤人群。
  - 皮肤存在问题的人群，包括皮炎、严重晒伤等。
  - 有皮肤损伤、湿疹、肿胀等情况的人群。
    - 否则有可能引起皮肤问题。
- 如果感到疼痛或不适，请马上停止使用。
  - 继续使用可能引起皮肤或健康问题。
- 当使用后倾倒剩水时，请握住器具，以防热水洒到手上。
  - 否则将可能导致烫伤。

2



- 要确保所使用的电压与本机标明的额定电压相符合。
  - 否则将可能导致火灾、触电、灼伤或烫伤。
- 请确保使用后从电源插座上拔出电源插头，拔出插头时，必须捏住插头从插座上拔出。
  - 否则可能导致火灾。
- 将本器具放置于水平表面使用。勿拿在手中使用。
- 使用期间或用后10分钟内，不能倾斜、摇晃或移动本器具。  
(以上行为可能导致蒸汽喷出口释放出大量蒸汽或溅出热水。)
- 使用期间或用后10分钟内，请勿触摸或窥视蒸汽喷出口。  
(由于即使关闭电源后，仍然会有蒸汽放出(大约60秒钟)，因此请不要靠近蒸汽喷出口。)
- 请保持您的面部或手部距离蒸汽或喷嘴保护罩边缘20厘米以上。
- 当给器具加水时，应小心勿让水与喷嘴、装饰杯、主面板或电源开关接触。
- 在使用中或使用后10分钟之内，请勿打开加水盖。
  - 否则，将可能导致灼伤或烫伤。
- 只能使用蒸馏水或纯净水。
  - 否则，将可能导致设备故障，严重时甚至可能导致灼伤或烫伤。
- 在如下情况时，请不要使用本器具。
  - 当电源线或插头损坏或变热时。
  - 当电源插座上的插头出现松动时。
    - 否则，可能会导致火灾、触电、短路、灼伤或烫伤。
- 不要切割、破坏、改造、勉强弯曲、拉扯或扭曲电源线。也勿将重物放置于电源线之上或挤压电源线。
  - 否则，将可能导致火灾、触电、灼伤或烫伤。
- 存放时，请勿将电源线缠绕在本器具上。
  - 否则，可能会导致电源线变形和功能失常。
- 对热度感觉迟钝者请勿使用。
  - 否则，将可能导致灼伤、触电或烫伤。
- 本品不宜供肢体、感官或精神上有残疾者。缺乏经验和知识者(包括儿童)使用，除非有人对此类人加以监督或者对本品的使用加以指导，且对使用者的安全能承担责任。

- 请妥善处理本产品的包装袋，避免婴幼儿窒息等意外发生，请置于儿童触摸不到的地方。儿童不适宜单独使用本器具。请对儿童进行监督，避免其将本产品视为玩具，引发危险。
  - 否则，将可能导致灼伤、烫伤或触电。
- 请勿在易燃物质附近使用本器具（酒精、稀释剂、汽油、指甲油去除剂、气雾剂等）。
  - 否则，将可能导致爆炸或火灾。
- 尽可能避免在浴室或其他湿度较大的房间内存放本器具。
  - 否则，可能会因为绝缘性降低，而导致触电或火灾。
- 尽可能避免在可能变潮湿的地方（如靠近浴池）放置本器具。
  - 否则，可能会因为绝缘性降低，而导致触电或火灾。
- 如果器具内装有水，请勿摇晃。
- 请勿从蒸汽出口排水。
  - 若热水滴聚集在蒸汽出口，且电源处于打开状态，热水滴可能会溅出，从而导致灼伤或烫伤。
- 使用完毕后，请关闭电源。
  - 否则，将可能导致事故甚至人身伤害。
- 加水或使用中，一定要将排水盒安放在本器具之上。
  - 否则，可能会导致灼伤或烫伤。
- 请勿自行改造、拆解或修理本器具。
  - 否则，可能会因火灾或操作异常而导致人身伤害。
- 如果电源线损坏，为避免危险，必须由制造厂或其维修部或类似的专职人员来更换。
- 请勿将本器具浸入水中。
- 请使用加水箱为本器具供水，并确保加水时不弄湿器具和操作显示面板。
  - 否则，可能会导致火灾、触电、短路、灼伤或烫伤。
- 请勿用湿手操作本器具。
  - 否则，将可能导致触电或短路。
- 如果因摔落或碰撞等使本器具受损时，切勿再使用。
  - 否则，可能会导致触电或火灾。

## 小心!

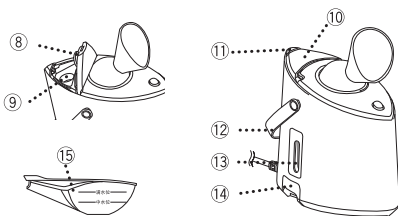
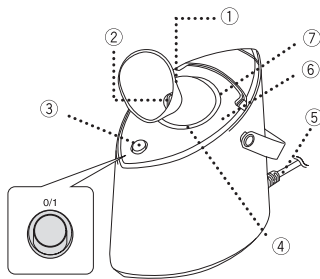
- 从电源插座拔出插头时，请握住插头。  
(不要触碰器具的任何金属部位。)
  - 否则将可能导致火灾、触电、灼伤或烫伤。
- 如果因坠落或撞击等情况使本器具受损，切勿再使用。
  - 否则，可能导致触电或火灾。
- 请将加水盖关紧。
  - 否则，可能会导致火灾、灼伤或烫伤。
- 使用后，务必将剩余的水倒掉。
- 清洗本器具时，请勿使用清洁剂。
- 使用后应清洁以避免油脂及其它残余物的积聚。



文  
中

## 部件名称

- ① 喷嘴
- ② 蒸汽出口
- ③ 电源开关
- ④ 离子化灯
- ⑤ 电源线
- ⑥ 主面板
- ⑦ 装饰环
- ⑧ 进水口垫圈
- ⑨ 进水口
- ⑩ 加水盖
- ⑪ 开盖按钮
- ⑫ 把手
- ⑬ 水位显示窗
- ⑭ 排水盒
- ⑮ 加水杯



## 使用前

- **过度使用可能会损伤皮肤。**
  - 开始时，建议您每周使用本器具2—3次。其后，一边观察自己的皮肤状况，一边调整使用频率和每次使用时间。如果发生任何皮肤问题，请马上停止使用。
  - 适应后建议每天使用一次。
- **您的皮肤状况可能会因您的健康状况而不同。**

（尤其在刚去完死皮（去除角质）期间，皮肤尤为敏感。）

  - 请一边观察您的皮肤状况，一边使用本器具，。



- 如果您的皮肤感到任何不适（如出现皮疹、发红或搔痒症状），请立即停止使用并向医师进行咨询。
- 皮肤问题可能是由于生活压力、体质、机体失常或化妆品造成的。在此情况下，请向专家进行咨询。

中文

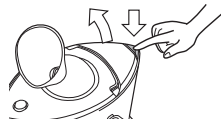
本器具可能会产生噪音，并会对附近的电视或无线电接收器产生干扰。（如图像和/或声音失真）  
本器具应放置在远离电视或无线电接收器的地方，并使用不同电源插座。

## 准备

由于使用时可能有水滴落，请将本器具放于湿水无碍的平坦表面上（如桌子等）。

### 1 检查排水盒是否已安装在器具之上。

### 2 按下开盖按钮，使加水盖向上打开。



### 3 用加水杯，给器具加满水。

- 请勿直接用水龙头加水。
- 只能使用蒸馏水或纯净水。  
（由于水质不同，可能会缩短本器具的使用寿命，所以建议您使用蒸馏水。）
- 当加水至“满水位”标记时，本器具可使用约12分钟。
- 如果添加了过多的水，多余的水将聚集在排水盒中。
- 请倒掉加水杯中任何剩余的水。  
（如果将加水杯放在桌子或其它表面，加水杯可能会倾斜，从而导致里面的水洒出。）
- 请不要加水超过“满水位”刻度。

### 4 关闭加水盖。

- 用力关紧，直至听见“咔嚓”一声为止。





## 如何使用离子蒸汽美容器

中文

### 1 电源插头插入电源插座，按下电源开关，直至听见“咔嚓”一声为止。

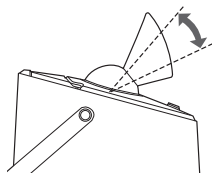
离子灯将点亮。

约30秒钟后，将释放出离子化蒸汽。

- 在蒸汽刚刚释放的时候，会有热水滴滴下，属于正常现象。
- 可能会听见“嘘嘘”声。这是放电声，属正常现象。
- 请勿在加水杯放于喷嘴上的情况下操作本器具。

### 2 调节喷嘴的角度（上/下）。

- 调节喷嘴时，请小心勿直接接触蒸汽。
- 调节喷嘴时，请按住本器具。



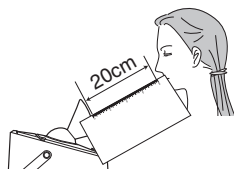
## 如何使用温热蒸汽

向左或右，稍微移动您的面部，使蒸汽均匀散布于面部。

将蒸汽朝向您的鼻子时，有效区域为“T”字部位。

### 1 使您的面部距离喷嘴保护罩边缘至少20厘米。

当您首次使用本器具或感觉难以确定合适距离时，请使用随附的距离测量卡以确定您接受蒸汽的部位到蒸汽和喷嘴保护罩边缘的距离。



### 2 使喷出蒸汽朝向脸部，稍微高于下巴。



### 3 使用后，将面部的水份擦拭干净（如用纸巾等），然后使用化妆水及乳液护理肌肤。







## 本器具的使用举例

除了直接在肌肤上使用本器具之外，还可配合部分护肤品使用。

### ● 清洁前

1. 使用本器具约3分钟后，可以使脸部污垢浮起。

### ● 进行清洁

1. 在脸上涂上一些洗面奶或卸妆乳液，使用蒸汽同时清洁您的皮肤。

2. 在脸上涂上一些按摩膏，使用蒸汽同时按摩您的皮肤。

### ● 清洁后

1. 用水清洁面部，然后使用化妆水及乳液护理肌肤。

## 使用后

每次使用后，请务必倒掉器具中剩余的水。

**1** 按电源开关，直至听见“咔嚓”一声关闭电源为止，然后从电源插座上拔出电源插头。

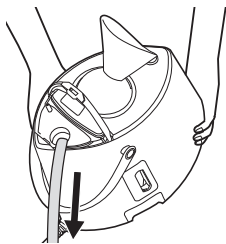
- 指示灯（离子化灯）将关闭。
- 按开关时，请小心勿接触蒸汽。  
- 否则，可能会导致灼伤或烫伤。
- 在未装水的情况下，切勿操作本器具。使用后，请及时关闭电源开关。  
- 否则，将会加快水垢的积累，从而导致蒸汽释放不良。

**2** 冷却本器具至少10分钟以上。

**3** 取出排水盒，倒掉其中的水。

**4** 打开加水盖，依箭头所示方向，倒掉器具中的水。

- 如果未按箭头方向倒水，可能会弄湿开关，因而导致功能失常。
- 为了防止倒水时的灼伤或烫伤危险，请握住器具底部。



**5** 擦净器具上的水。



- 请勿将电源线缠绕在器具上。  
- 否则，可能会损坏电源线。
- 如果存放时将加水杯倒过来放在器具上，首先应该擦净杯中的水。  
- 否则，可能会将开关弄湿，从而导致功能失常。

## 清洗

请勿在水中洗刷或浸泡本器具。

### 清洁进水口和水位显示窗周边

- 每月一次。
- 为了清除和防止水垢沉淀，使用后，应该让器具冷却至少10分钟以上，然后依下列步骤进行清洁。

#### 1 打开加水盖，用加水杯加自来水。

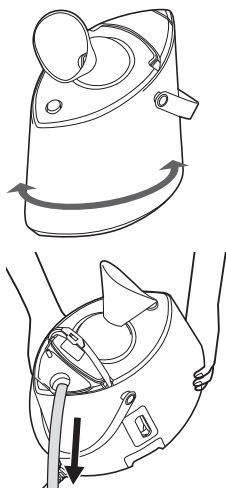
- 加水至器具上的“满水位”标记为止。

#### 2 关闭加水盖，水平摇动器具3-4次。

- 请轻轻摇动，切勿将其倾斜。

#### 3 打开加水盖，依箭头所示方向，倒掉器具中的水。

- 为了防止倒水时的灼伤或烫伤危险，请握住该器具底部。
- 为了使清洁更有效，请重复上述步骤2、3次。



#### 4 擦净器具上的水。

- 即使进水口或水位显示窗附近有水垢沉淀，也不会影响蒸汽的释放。

### 清洁本器具

请勿在水中洗刷或浸泡该器具



- 用浸有肥皂水的抹布，擦拭本器具。  
绝对勿使用酒精、稀释剂、汽油、指甲油去除剂等。  
- 否则，可能会导致功能失常或部件破裂或褪色。
- 即使排水之后，器具中也仍会有残留水。  
- 这不会带来卫生问题，因为下次使用时，水将被煮沸。

## 规格

产品名称	离子蒸汽美容器
产品型号	EH2426
额定电压	a. c 220 V ~50 Hz
额定功率	290 W
蒸汽释放率	约6ml / min
蒸汽温度	约40°C (离蒸汽出口约25cm的距离)
原产地	中国
生产日期	请见商品上刻印
执行标准	GB4706.1 GB4706.15 GB4343.1 GB17625.1 Q/SXDGWB 9

注：以上规格若有变更，恕不另行通知。

## 什么是细微离子蒸汽？

- 离子蒸汽是普通蒸汽离子化(雾化)的结果，且已在美容院中得到应用。
- 细微离子蒸汽属于离子蒸汽的一种，是离子蒸汽得到进一步雾化的效果。
- 细微离子蒸汽可渗透至肌肤底层，使肌肤更健康 and 更具有弹性。(因人而异，对于有些人效果可能并不明显。)

## 售后服务

在保证本产品品质优良的同时，您将享有我公司的免费服务保证。从购买之日起二年内，若发生任何因制造工艺或原部件造成之损坏，我们将为您提供免费的门市维修服务，请填写好保修证并向购买店索取发票或有效购买凭证，以备万一发





生之用，而不造成您的经济损失（详情见保修证），无论在保修期间或保修期后，您皆可在Panasonic认定维修店获得优质的维修服务。

卍  
卐

如有任何问题，请与我们联系。

### 紧急处理方法

---

- 发生异常时（有烧焦味等）须立即停止使用并拔下电源插头。
- 若在异常状态下继续使用，会因发热等情形，造成火灾及触电的发生，请速与Panasonic认定维修店或经销商咨询。



## **Safety precautions**

---

To ensure proper operation of this appliance, please read carefully all the safety precautions before use. The safety precautions are provided to help you with the correct and safe operation of this appliance so that you may avoid injuries to yourself and others as well as damage to property. The safety precautions are defined as follows.

### **ALWAYS FOLLOW THESE IMPORTANT SAFETY PRECAUTIONS!**

#### **⚠WARNING:**

This message indicates potentially hazardous actions and situations, which, if not avoided, could result in death or serious injury.

#### **⚠CAUTION:**

This message indicates potentially hazardous actions and situations, which, if not avoided, could result in personal injury or property damage.

#### **⚠WARNING!**

- Do not use the appliance near bath tub, shower, washbasin or other water containers, which are filled with water.
- Do not use the appliance with wet hands. Do not place or store the appliance in places with high humidity, or near water slot, or where there is water or other liquid is contained. Do not use the appliance near water.
- Try to avoid using the appliance in bathroom. When using it in bathroom, remove the plug from the power outlet after use. Even after the power supply has been cut off, hazard may still happen for the appliance is placed near water. To ensure your safety, we recommend you to install a residual current device (RCD) with rated residual operating current of less than 30mA in bathroom power supply circuit. Please consult RCD installer.

- The following persons should consult a physician before use.
  - Persons with acute illnesses or malignant tumors, persons who are pregnant
  - Persons who have allergies and sensitive skin
  - Persons with skin problems, such as dermatitis, severe sunburns, etc.
  - Persons with skin injuries, eczema, swelling, etc.
- Failure to do so may result in skin problems.
- Immediately stop using if pain or discomfort is experienced.
  - Continued using may result in skin or health problems.
- When disposing of the water after use, hold the appliance so that your hands are not exposed to the hot water.
  - Failure to do so may result in burns.
- Always ensure the appliance is operated on an electric power source matched to the rated voltage indicated on the appliance.
  - Failure to do so may result in fire, electric shock, burns, or scalding.
- Be sure to remove the plug from the power outlet after use.
  - Failure to do so may result in fire.
- Use on a flat surface. Not for handheld use.
- Do not tilt, shake, or carry the appliance during use or within 10 minutes after use.
  - (Doing so may cause large amount of steam discharge or hot water spill from the outlet.)
- Do not touch or look into the steam outlet during use or within 10 minutes after use.
  - (Because steam is still released (for about 60 seconds) even after the power has been cut off, do not approach the steam outlet.)
- Do not allow your face or hands to come into direct contact with the steam or within 20 cm from the edge of the nozzle.
- When filling the appliance with water, be careful not to let water come in contact with the nozzle, cosmetic ring, main panel, or power switch.

- Do not open the water supply cover during use or within 10 minutes after use.
  - Doing so may result in burns or scalding.
- Use only distilled water or purified water.
  - Failure to do so may result in burns or scalding or equipment malfunction.
- Do not use the appliance under the following conditions.
  - When the cord or plug is damaged or becomes hot.
  - When the plug is loose in the power outlet.
  - Doing so may result in fire, electric shock, short circuit, burns, or scalding.
- Do not cut, damage, modify, unreasonably bend, pull, or twist the cord. Also do not place heavy objects on the cord or squeeze the cord.
  - Doing so may result in fire, electric shock, burns, or scalding.
- When storing, do not wind the power cord around the appliance.
  - Doing so may cause deformation and malfunction of the power cord.
- The appliance is not for use by persons who are body, sense or mental handicapped, and persons who are lack of experiences and knowledge (including children), unless somebody who takes responsibility for the safety of the above mentioned persons, supervises or guides the use of the appliance.
- Properly dispose the package of the appliance, keep the package away from infants to prevent suffocation of infants from happening. Children are not allowed to use the appliance alone. Watch out to prevent hazard resulted from children's playing with the appliance.
  - Failure to do so may result in burns, scalding, or electric shock.
- Do not use the appliance near flammable substances (alcohol, thinner, benzine, enamel remover, aerosol sprays, etc.).

- Doing so may result in explosion or fire.
- Do not store the appliance in bathroom or in other rooms with high humidity.
  - Doing so may result in electric shock or fire due to insulation deterioration.
- Do not place the appliance where it may get wet (such as next to wash basin).
  - Doing so may result in electric shock or fire due to insulation deterioration.
- Do not shake the appliance if it contains water.
- Do not drain the water from the outlet.
  - If water droplets collect at the steam outlet and the power is turned on, hot water droplets may splatter causing burns or scalding.
- Do not leave the power connected when not in use.
  - Doing so may result in an accident or personal injury.
- Be sure the drain cup is installed in the unit when filling with water or during use.
  - Failure to do so may result in burns or scalding.
- Do not attempt to modify, disassemble, or repair the appliance by yourself.
  - Doing so may result in personal injury due to fire or abnormal operation.
- If the cord is damaged, the qualified specialists from the manufacturer or its service center or other equivalent personnel must replace it.
- Do not immerse the appliance into water.
- Use the water supply tank to supply water to the appliance and make sure that the appliance and the operation display panel do not get wet.
  - Doing so may result in fire, electric shock, short circuit, burns, or scalding.
- Do not use with wet hands.
  - Doing so may result in electric shock or short circuit.
- Do not use the appliance again if it has been damaged being dropped or hit etc.



- Doing so may result in electric shock or fire.

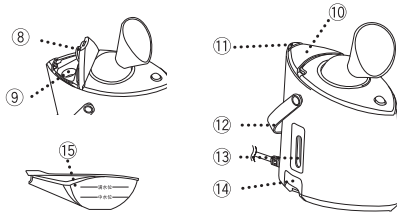
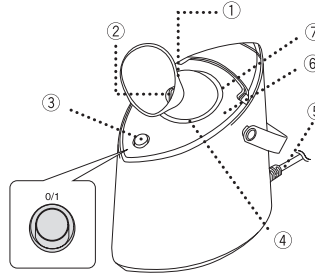
**⚠ CAUTION!**

- Hold the plug when removing it from the power outlet.  
(Do not touch any metal part on the appliance.)
  - Failure to do so may result in fire, electric shock, burns, or scalding.
- Do not use the appliance if it has been damaged by being dropped or hit etc.
  - Doing so may result in electric shock or fire.
- Securely close the water supply cover.
  - Failure to do so may result in fire, burns, or scalding.
- Be sure to drain the water after use.
- Do not use detergents to clean the appliance.
- Clean the appliance after use to prevent accumulation of grease or other residuals.



## Parts identification

- ① Nozzle
- ② Steam outlet
- ③ Power switch
- ④ Ion lamp
- ⑤ Cord
- ⑥ Main panel
- ⑦ Cosmetic ring
- ⑧ Water inlet gasket
- ⑨ Water inlet
- ⑩ Water supply cover
- ⑪ Water supply cover open button
- ⑫ Handle
- ⑬ Water level
- ⑭ Drain cup
- ⑮ Water supply cup



## Before use

- **Excessive use is detrimental to the skin.**
  - Start by using the appliance 2 to 3 times a week. Thereafter, adjust the frequency and duration of use while observing the skin condition. If any skin problem develops, stop using immediately.
  - Recommended usage is once per day.
- **Your skin condition also may differ depending on your health.**  
**(Skin is particularly sensitive on days when peeling (removal of corneum) is performed.)**
  - Use the appliance while observing the condition of the skin.


- If you experience any skin discomfort, such as rash, redness, or itching, stop using and consult a physician.
- Skin problems may be caused by stress, constitution, organic disorders, or cosmetics. If problems occur, consult a specialist.

The appliance may generate noise (distorted images and/or sounds) and interference with nearby TV or radio receivers.

Keep the appliance away from your TV receiver or radio receiver and use a different power outlet.

## Preparation

Because water droplets may drop down during operation, please place the appliance on a flat level surface, such as on a desk, which would not cause any problem.

- 1 Check that the drain cup is installed in the appliance.**
- 2 Press the water supply cover open button to lift up the water supply cover.** 
- 3 Use the water supply cup to fill the appliance with water.**
  - Do not fill directly from a water faucet.
  - Use only distilled water or purified water.  
(Since the service life of the appliance may shorten depending on water quality, the use of distilled water is recommended. Distilled water is usually available at drugstores.)
  - When water is filled to the “满水位 (full)” mark, the appliance can be used for approximately 12 minutes.

- Water collects in the drain cup if too much water is added.
- Dispose any leftover water in the water supply cup. (If the water supply cup is placed on a table or other surface, it may tilt causing the water inside to spill out.)
- Do not fill with water above the “满水位 (full)” mark.

## 4 Close the water supply cover.

- Firmly close until a click is heard.

### How to use the ion steamer

---

## 1 Insert the plug into a power outlet and press the power switch until a click is heard.

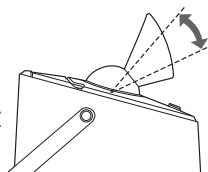
Ion lamp turns on.

Ionized steam is released after about 30 seconds.

- It is normal for hot water droplets to be discharged at the beginning of the steam flow.
- A whizzing may be heard. This is the sound of electric discharge which is normal.
- Do not operate the appliance with the water supply cup placed on the nozzle.

## 2 Adjust the angle (up/down) of the nozzle.

- Adjust the nozzle while taking care not to directly touch the steam.
- Hold the appliance when adjusting the nozzle.



### How to use the hot steam

---

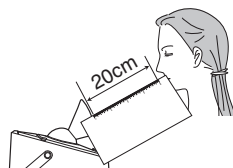
Move your face slightly to the left and right so that the steam spreads evenly.

Using the steam on your nose is effective on the T-zone.



## **1 Keep your face at least 20 cm away from the edge of the nozzle.**

When using the appliance for the first time or it is difficult to find the appropriate distance, use the attached leaflet to confirm the distance between the area you want to expose to the steam and the nozzle edge.



## **2 Position the steam outlet towards your face slightly above your chin.**



## **3 After use, wipe off the water (such as with a tissue), then also apply a lotion to prepare your face and apply an emulsion to supplement skin oil.**

### **Examples of the uses of the facial ionic steamer**

In addition to using the appliance on bare skin, it can also be used in combination with facial treatments.

#### **● Before cleansing**

**1. After having used the appliance for about 3 minutes, dirt can be lifted from the skin.**

#### **● Perform cleansing.**

**1. Apply some cleansing milk or make-up remover lotion on your face, and use the steam while cleaning your skin.**

**2. Apply massaging cream on your face, and use the steam while massaging your skin.**



● **After cleansing**

- 1. Clean your face with water, and then nurse your skin with face liquids and lotions.**

**After use**

---

**Be sure to discard the water in the tank every time after use.**

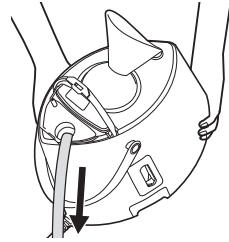
- 1 Press the power switch until a click is heard to turn off the power and then remove the plug from the power outlet.**

- The lamp turns off.
- Be careful not to touch the steam when pressing the switch.
  - Failure to do so may result in burns or scalding.
- Do not operate the appliance if it contains no water.
  - Doing so will quicken the accumulation of water scale, which may result in poor steam discharge.

- 2 Leave the appliance alone to cool for at least 10 minutes.**

**3 Discard the water in the drain cup.**

**4 Open the water supply cover and pour out the water from the appliance in the direction of the arrow as shown.**



- Emptying the water in a direction other than that indicated by the arrow may get the switch wet, which may cause a malfunction.
- To prevent risk of burns or scalding when discarding the water, hold the bottom of the appliance.

**5 Wipe off any water from the appliance.**

- Do not wind the cord around the appliance.
  - Doing so may damage the cord.
- If the water supply cup is to be placed upside down on the appliance for storage, first wipe off any water from the cup.
  - Failure to do so may get the switch wet and result in malfunction.

## **Cleaning**

**Do not wash or soak the appliance in water.**

### **Cleaning around the water inlet and water level**

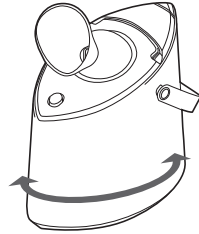
- Clean once a month.
- To remove and prevent water scale deposits, let the appliance cool for at least 10 minutes after use and then clean according to the following steps.

**1 Open the water supply cover and add tap water using the water supply cup.**

- Add water until the “满水位 (full)” mark on the appliance.

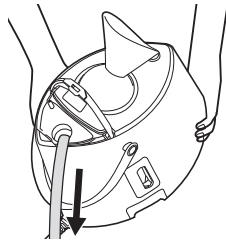
**2 Close the water supply cover and shake the appliance horizontally 3-4 times.**

- Shake the appliance gently without tilting it.



**3 Open the water supply cover and pour out the water from the appliance in the direction of the arrow as shown.**

- To prevent risk of burns or scalding when discarding the water, hold the bottom of the appliance.
- Repeat the above steps 2-3 times for effective cleaning.



**4 Wipe off any water from the appliance.**

- Even if there are water scale deposits near the water inlet or water level, the discharged steam is not affected.

**Cleaning the appliance**

**Do not wash or soak the appliance in water.**

- Wipe the appliance with a cloth moistened with soapy water.  
Never use alcohol, thinner, benzine, enamel remover, etc.  
- Doing so may result in malfunction or part cracks or discoloration.
- Even after draining the water, some water remains in the appliance.  
- This does not cause any sanitary problems since the water is boiled when used the next time.



## Specifications

Product name	Facial Ionic Steamer
Product model	EH2426
Power supply	a.c 220 V ~50 Hz
Power consumption	290 W
Steam discharge rate	Approx. 6 ml/min
Steam temperature	Approx. 40 °C (at a distance of approx. 25 cm from ion steam outlet)
Place of origin	China
Produce date	Please see on the commodity to engrave
Execution standard	GB 4706.1 GB 4706.15 GB 4343.1 GB 17625.1 Q/SXDGWB 9

- You are not informed, if the specification above is changed.

### What is nano-sized ion steam?

- Ion steam is the result of ionizing (atomizing) ordinary steam and is used in esthetic salons.
- Nano-sized ion steam is a type of ion steam in which the ion steam is further atomized.
- Nano-sized ion steam can reach the deepest parts of the corneum to provide puffy skin fitness and elasticity.  
(Depending on the person, the effects may not be obvious.)

### Emergency treatment

- When something abnormal happens (burnt smell, etc.), the appliance must be stopped from operation and the plug must be pulled out.

- If continue using the appliance in case of abnormal situations, overheat of the appliance may cause fire or shock. Please contact an authorized Panasonic service center as soon as possible.







## 保修证

### 保修条款

有关保修期内Panasonic商品的保修（无偿修理），从购入之日起开始实施。

1. 保修期内的商品只可在Panasonic认定维修店进行保修；保修时，请出示本保修证及购机发票。

以下两点需特别注意：

- a. 本保修证遗失后不再补发，请妥善保管。
- b. 本保修证仅限于中华人民共和国国内有效(香港、澳门、台湾三地区暂不可使用)。

2. 自购入之日起在以下期间内，在正常使用中发生故障的情况下进行保修。

- 整机（除商用产品）.....2年内无偿
- 整机（商用产品）.....6个月
- 内刀头、外刀网、刀头、辅助装置、附件.....有偿提供

3. 属下列情况之一者，即使在保修期内，也不能以保修对待，但是可以实行收费修理：

- a. 未按商品使用说明书要求使用、维护、保管而造成损坏的；
- b. 因不正确操作、电源不正常、破损（如：摔落等）而造成损坏的；
- c. 不经Panasonic认定维修店维修人员拆卸造成损坏的；
- d. 不能出示本保修证及有效购机发票的；
- e. 保修证上记录的信息与商品实物标识不符或者涂改的；
- f. 因不可抗力因素（如雷电、地震、火灾、水灾等）造成损坏的。

4. 本保修条款只适用于消费者个人为生活消费需要而购买使用的场合，不适用于经营性等使用。

#### 【商品信息】

商品名称: **离子蒸汽美容器** 产地: **中国·广州**

商品型号: **EH2426** 制造编号:

【保修回执】以下回执是保修的重要依据，请勿自行撕下

商品型号: EH2426 制造编号: **保修结算4**

商品型号: EH2426 制造编号: **保修结算3**

商品型号: EH2426 制造编号: **保修结算2**

商品型号: EH2426 制造编号: **保修结算1**

商品型号: EH2426 制造编号: **促销员留存**





保修证管理编码印刷处：

本保修证内容如有变更恕不另行通知

**[销售记录] 未完整记录以下信息将可能无法进行保修**

销售日期：\_\_\_\_\_ 发票号码：\_\_\_\_\_ 安装调试日期：\_\_\_\_\_ 销售店  
(盖章)

顾客姓名：\_\_\_\_\_ 联系电话：\_\_\_\_\_

顾客地址：\_\_\_\_\_ 邮 编：\_\_\_\_\_

销售店名称：\_\_\_\_\_ 销售店电话：\_\_\_\_\_

销售店地址：\_\_\_\_\_ 邮 编：\_\_\_\_\_

**[维修记录]**

维修店名称：\_\_\_\_\_ 联系电话：\_\_\_\_\_ 送修日：\_\_\_\_\_

维修店地址：\_\_\_\_\_ 邮 编：\_\_\_\_\_

故障内容：\_\_\_\_\_ 故障原因：\_\_\_\_\_

维修内容：\_\_\_\_\_

维修员签字：\_\_\_\_\_ 交验日期：\_\_\_\_\_

维修店名称：\_\_\_\_\_ 联系电话：\_\_\_\_\_ 送修日：\_\_\_\_\_

维修店地址：\_\_\_\_\_ 邮 编：\_\_\_\_\_

故障内容：\_\_\_\_\_ 故障原因：\_\_\_\_\_

维修内容：\_\_\_\_\_

维修员签字：\_\_\_\_\_ 交验日期：\_\_\_\_\_

维修店名称：\_\_\_\_\_ 联系电话：\_\_\_\_\_ 送修日：\_\_\_\_\_

维修店地址：\_\_\_\_\_ 邮 编：\_\_\_\_\_

故障内容：\_\_\_\_\_ 故障原因：\_\_\_\_\_

维修内容：\_\_\_\_\_

维修员签字：\_\_\_\_\_ 交验日期：\_\_\_\_\_

Panasonic客户咨询服务中心：  
400-810-0781；800-810-0781 (固定电话)  
Panasonic官方网站：<http://panasonic.cn>

松下电器 (中国) 有限公司





-  
-  
-  
-  
-



**松下电工・万宝电器（广州）有限公司 (PEWWBG)**  
**Panasonic Electric Works Wanbao (Guangzhou) Co., Ltd.**

工厂地址：广州市番禺区市广路万宝基地  
(Address): Wanbao Base, Shiguang Road, Panyu District,  
Guangzhou

电话 (Tel): (020)84770333

传真 (Fax): (020)84773033

邮政编码 (Post Code): 511495

原产地：中国

中国印刷

Printed in China

EH921024261 S0509-1

发行：2009年5月

Ⓜ CH, EN