

Panasonic®

使用说明书 Operating Instructions

(家用) 电动剃须刀
(Household) Rechargeable Shaver

型号 ES-SL41, ES-BSL4
Model No. ES-BSL2

中文 2

English 9

在使用本产品前，请仔细阅读本说明书并妥善保管，以备将来参考。

Before operating this unit, please read these instructions completely and save them for future use.



感谢您选购松下电器剃须刀ES-SL41、ES-BSL4、ES-BSL2。松下电器剃须刀采用干/湿两用技术，既可在干燥的环境下使用，也可在淋浴或盆浴时使用，让您充分享受舒适、轻松的剃须乐趣。请在使用前阅读所有说明。

重要事项

本剃须刀内置充电电池，请不要将其丢入火中进行加热或在高温环境中充电、使用和存放。

► 使用前

ES-SL41、ES-BSL4、ES-BSL2干/湿两用剃须刀，可以使用剃须膏湿剃，也可以干剃。此剃须刀具有防水功能。可放入水中清洗，也可在淋浴时使用。下图标志表示适合用在洗澡或淋浴中。



使用剃须膏湿剃三周后，您能体会到一些变化。由于您的皮肤和胡须约需一个月时间才能适应新的剃须方式，因此您可能需要一点时间来适应松下电器干/湿两用剃须刀。

► 使用剃须刀

注意

因外刀网很薄，若使用不当就可能造成损坏。使用剃须刀前，请确认外刀网是否损坏。如果外刀网已损坏，请不要使用该剃须刀，因为这样会割伤皮肤。

- 请在出现异常或故障时终止使用。

- 请勿将外刀网过度压向嘴唇或面部其他部位。请勿将外刀网直接接触伤疤或损伤的皮肤。
- 不要与您的家人或其他人员共用剃须刀。否则可能造成感染或炎症。
- 本产品不宜供肢体、感官或精神上有残疾者、或缺乏经验和知识者（包括儿童）使用，必须有监护者从旁监督并对本产品的使用加以指导，且对使用者的安全能承担责任。请避免儿童将本产品视为玩具，从而引发危险。

► 充电

- 切勿在浴室或淋浴房使用电源适配器。
- 仅限使用专用的电源适配器（RE7-73）。请勿用专用的电源适配器给其他电器充电。
- 将电源线插头插入干燥的家用电源插座内进行充电，操作时双手应保持干燥。
- 从家用电源插座上拔出电源线插头时，不要用力拉电源线，因为可能会损坏电源线，应抓紧电源适配器的插头部位。
- 电源线不能更换，如果电源线损坏，此电源适配器应废弃。

► 清洁剃须刀

警告

为了避免触电，请在清洁前从家用电源插座上拔出插头。

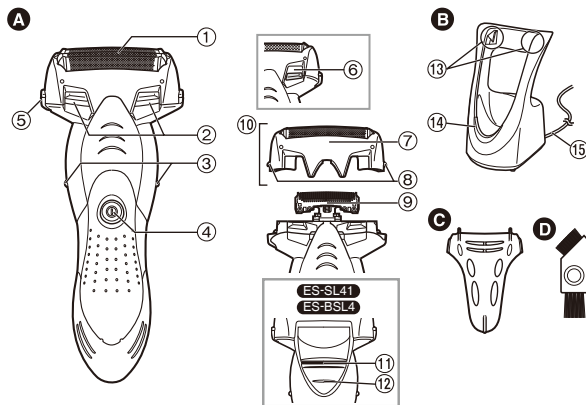
- 请在装有两个内刀头的状态下进行清洗，若在仅装有一个内刀头的状态下进行清洗，可能会损坏剃须刀。
- 可用清水清洗剃须刀，不要使用盐水或热水。不要将剃须刀长时间浸泡在水中。

- 仅限使用稍稍蘸有自来水或肥皂水的软布清洁外壳。不要使用稀释剂、汽油、酒精或其他化学物品。
- 不要用水清洗电源适配器。

► 存放剃须刀

- 存放剃须刀时，请务必将其放入便携架中以免刮擦外刀网。
- 请在使用后将剃须刀存放在干燥的地方。
- 不要将剃须刀存放在阳光直射或有其他热源的地方。
- 存放剃须刀时，从家用电源插座上拔出电源线插头。
- 不要折弯电源线或将电源线缠绕在电源适配器上。
- 请妥善处理本产品的包装袋，避免婴幼儿窒息等意外发生。请置于儿童触摸不到的地方。

部件名称



A 机身

- ① 外刀网
- ② 清洁视窗
- ③ 侧面端子
- ④ 电源开关
- ⑤ 外刀架释放按钮
- ⑥ 入水口
- ⑦ 外刀架
- ⑧ 外刀网释放按钮
- ⑨ 内刀头

⑩ 外刀部

- ⑪ 修剪刀 **ES-SL41, ES-BSL4**
- ⑫ 修剪刀操纵杆 **ES-SL41, ES-BSL4**

B 电源适配器 (RE7-73) (简称适配器)

- ⑬ 充电端子
- ⑭ 充电状态指示灯
- ⑮ 电源线

C 便携架

D 清洁刷

中文

使用便携架

剃须刀可垂直或水平放置。携带剃须刀时，可用便携架保护外刀网并防止开关误操作。

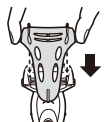
- 携带剃须刀时，请务必在安装便携架前清除胡须碎屑。



安装便携架

如图所示安装便携架。

- 确保剃须刀上的所有四个凸起均已稳妥插入。



拆卸便携架

按下两侧的同时拆卸便携架。



充电

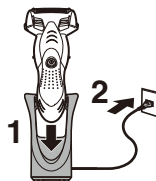
充电

如果感觉剃须刀速度下降，请按下列步骤给剃须刀充电。

可在装有便携架的情况下给剃须刀充电。

1 关闭剃须刀并如图示将其插入电源适配器插孔。

- 擦干本体侧面端子上的水滴。
- 如果在电源开关打开的情况下给剃须刀充电，则剃须刀从电源适配器取下时即会开始工作。



2 将电源线插头插入家用电源插座里。

充电状态指示灯红灯亮。

- 约 8 小时，即可完成充电。
- 购买后初次使用或半年以上未使用过，请充电约 20 小时（要激活充电电池活性）。如果充电电池完全放电后充电，充电状态指示灯可能不会立即亮，继续充电几分钟后即正常。

3 请在充电后拔出电源线插头。

- 给电池充电 8 小时以上不会影响电池性能。
- 充电的推荐环境温度为 0 至 35 摄氏度。在温度过低或过高的条件下，电池可能无法正常充电或根本无法充电。
- 充电状态指示灯在电源线插头接通电源后始终保持红灯亮，直至断开电源后灯灭。

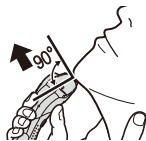
充电过程中无法操作剃须刀。

剃须

使用剃须刀



1 按下电源开关。



2 如上图所示握住剃须刀剃须。

轻轻地压向面部开始剃须。用另一只手绷紧脸上皮肤，逆着胡须生长方向前后移动剃须刀。当皮肤适应剃须刀之后您可以稍稍加大压力，但施加压力过大就可能造成皮肤伤害。

也可使用握笔方式进行剃须。



注意

- 请在剃须前确保清洁叶窗已关闭。
- 使用剃须刀时不要将手指放在电源开关上。这样会导致剃须刀关闭。
- 请勿使用含有洗涤剂的剃须膏或洁面乳，否则可能会导致外刀网堵塞。

使用修剪刀 ES-SL41,ES-BSL4

将修剪刀操纵杆往上推，以打开修剪刀。将修剪刀放置与皮肤成直角（90度）的位置，然后从上向下移动进行修剪。



- 使用剃须刀的推荐环境温度范围为 0 至 35 摄氏度。如果使用时温度超出此范围，此剃须刀可能停止运行。

清洗

清洗剃须刀

1. 从电源适配器插孔中取出剃须刀。
2. 在外刀网上涂抹少量洗手液和水。
 - 关闭清洁叶窗。
3. 启动剃须刀并向外刀网撒些水。

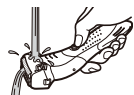


如需清除微量碎须

4. 滑动清洁叶窗，直到听到“咔嗒”一声为止。



5. 用流动的水清洗外刀部。



6. 关闭剃须刀。
• 用水冲洗，然后上下晃动几次去除水滴。

• 排水时，请注意不要让产品撞击到水槽或任何其它地方。否则，可能会造成故障。

针对大量碎须

4. 10 至 20 秒后关闭剃须刀。
5. 按下外刀架释放按钮。取出外刀部并打开剃须刀。
6. 用流动的水清洗剃须刀和外刀部。



• 用水冲洗，然后上下晃动几次去除水滴。

7. 用干布拭去水珠。
8. 将外刀部放在阴凉通风处直至吹干。
• 打开清洁叶窗。
- 外刀部若从机身拆下则会干得更快。
9. 将外刀部安装至剃须刀上。

8

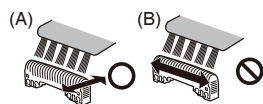


使用清洁刷清洁

使用长刷，清洁外刀网、剃须刀机身和修剪刀 (ES-SL41, ES-BSL4)。



使用短刷，沿右图所示 (A) 的移动方向移动，清洁内刀头。



- 请勿沿 (B) 方向移动短刷，因为这样将损坏内刀头而影响刀片的锋利度。
- 请勿使用短刷清洁外刀网。

更换外刀网和内刀头

外刀网	每年一次
内刀头	每两年一次

取出外刀部

按下外刀架释放按钮并向上提起取出外刀部。

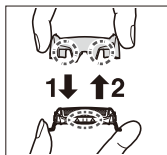
安装外刀部

将入水口面转到前面以后，把外刀部稳固地安装到剃须刀直至其到位置。



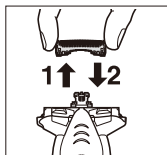
► 更换外刀网

- 按下外刀网释放按钮，拉出外刀网。
- 对齐入水口面和外刀网（△）标识，然后稳固地安装在一起。
 - 外刀网不能反向安装。
 - 安装到剃须刀时，请确保外刀网插入到外刀架内。



► 更换内刀头

- 取下内刀头，一次取一个。
 - 不要触摸内刀头的边沿（金属部分），以防止您的手受伤。
- 安装内刀头时，一次插入一个内刀头，直至固定位置为止。



► 更换部件

更换部件在经销商或本公司授权的维修中心有售。

ES-SL41, ES-BSL4, ES-BSL2 更换部件	外刀网	WES9087
	内刀头	WES9068

内置式充电电池的取出方式

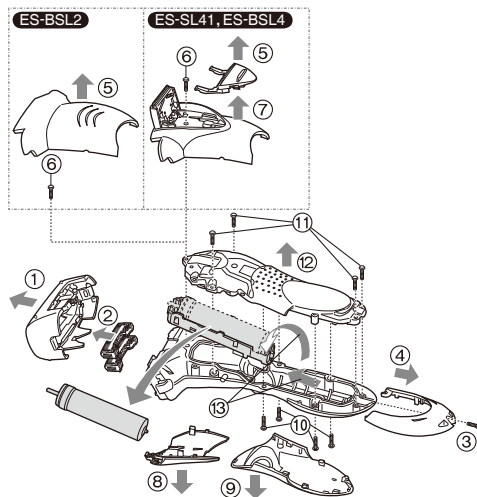
本产品内藏有充电电池，在消费者决定废弃本产品前，请务必将电池从本产品中取出。

分解本产品，取出电池前，一定要断开电源。

鼓励消费者在决定废弃本产品前，事先征求经销商或本公司授权的维修中心的意见，尽量延长本产品的使用寿命。

当消费者决定废弃本产品又不想自行分解本产品取出电池时，鼓励消费者将本产品送往松下电器认定维修店，由维修店对电池进行分解和回收。

- 电池务必废弃于政府规定的地方或回收处理单位。
- 分解的过程中切勿将电池短路。
- 按下图所示的①～⑬的顺序拆开ES-SL41、ES-BSL4，按①～⑥、⑧～⑬的顺序拆开ES-BSL2，卸下电池。



环境保护与资源回收

此剃须刀使用镍氢电池。

如果您的国家有相关规定，请务必在指定处对旧电池进行统一处理。

规格

中文

产品名称		电动剃须刀
产品型号		ES-SL41, ES-BSL4, ES-BSL2
电源适配器额定输入		220 V \sim 50 Hz 7 mA
电源适配器额定输出		1.7 V \equiv 0.11 A
充电时间		约 8 小时
原产地		中国
生产日期		请见商品上刻印
执行标准	中国国家 标准	GB4706.1 附录 B GB4706.9
	企业标准	Q/SXWBMJ 6

本产品仅适合家庭使用。

Thank you for choosing a Panasonic shaver ES-SL41 / ES-BSL4 / ES-BSL2. With our WET/DRY technology, you can enjoy using your Panasonic shaver dry or in the shower or bath for gentle and easy shaving. Please read all instructions before use.

Important

This shaver has a built-in rechargeable battery. Do not throw into fire, apply heat, or charge, use, or leave in a high temperature environment.

► Before use

This WET/DRY shaver can be used for wet shaving using shaving lather or for dry shaving. You can use this watertight shaver in the shower and clean with water. The following symbol means suitable for use in a bath or shower.



Treat yourself to wet lather shaves for at least three weeks and notice the difference. Your Panasonic WET/DRY shaver requires a little time to get used to because your skin and beard need about a month to adjust to any new shaving method.

► Using the shaver

Caution

The outer foil is very thin and can be damaged if not used correctly. Check that the foil is not damaged before using the shaver. Do not use the shaver if the foil is damaged as you will cut your skin.

- Terminate usage when there is an abnormality or failure.
- Do not use excessive pressure to apply the outer foil to your lip or other part of your face. Do not apply the outer foil directly to blemishes or injured skin.
- Do not share your shaver with your family or other people. Doing so may result in infection or inflammation.
- This appliance is not intended for use by persons (including children) with reduced physical, sensory or mental capabilities, or lack of experience and knowledge, unless they have been given supervision or instruction concerning use of the appliance by a person responsible for their safety. Children should be supervised to ensure that they do not play with the appliance.

► Charging the shaver

- Never use the AC adaptor in the bathroom or shower room.

- Use the dedicated AC adaptor (RE7-73) only. Do not use the dedicated AC adaptor to charge other appliances.
- Put the plug into a household outlet where there is no moisture and handle it with dry hands.
- Hold the plug when disconnecting it from the household outlet. If you tug on the power cord, you may damage it.
- The supply cord cannot be replaced. If the cord is damaged, the AC adaptor should be scrapped.

► Cleaning the shaver

Warning

Disconnect the plug from the household outlet before cleaning to prevent electric shock.

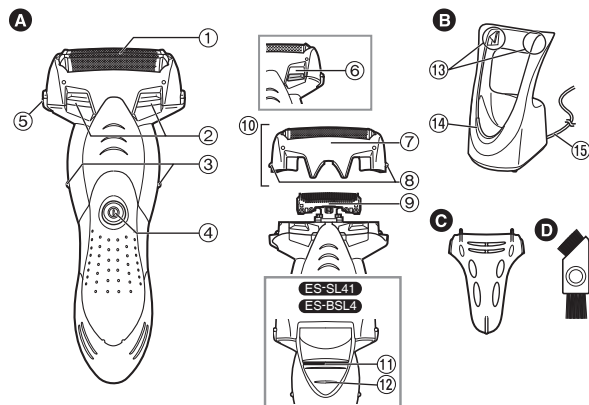
- Keep both the inner blades inserted. If only one of the inner blades is inserted, the shaver may be damaged.
- If you clean the shaver with water, do not use salt water or hot water. Do not soak the shaver in water for a long period of time.
- Clean the housing only with a soft cloth slightly dampened with tap water or soapy tap water. Do not use thinner, benzine, alcohol or other chemicals.
- Do not wash the AC adaptor with water.

► Storing the shaver

- When storing the shaver, always put it in the carrying holder to avoid scratching the outer foil.

- Store the shaver in a place with low humidity after use.
- Do not store the shaver where it will be exposed to direct sunlight or other heat sources.
- Remove the shaver from the AC adaptor when storing it.
- Do not bend the power cord or wrap it around the AC adaptor.
- Please properly store or dispose the plastic bag of the appliance to avoid any accidents, such as infants suffocation, etc. Keep the plastic bag away from infants.

Parts identification



A Main body

- ① System outer foil
- ② Cleaning shutter
- ③ Side terminals
- ④ Power switch
- ⑤ Foil frame release button
- ⑥ Water inlet
- ⑦ Foil frame
- ⑧ System outer foil release buttons

⑨ Inner blades

- ⑩ Outer foil section
- ⑪ Trimmer

ES-SL41, ES-BSL4

⑫ Trimmer handle

ES-SL41, ES-BSL4

B AC adaptor (RE7-73)

- ⑬ Charging terminal
- ⑭ Charge indicator lamp
- ⑮ Power cord

C Carrying holder

D Cleaning brush

Using the carrying holder

The shaver can be kept vertically or horizontally. When transporting the shaver, you can use the carrying holder to protect the outer foil and prevent erroneous operation of the switch.

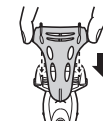
- When transporting the shaver, be sure to clean off any shavings before attaching the carrying holder.



Attaching the carrying holder

Attach the carrying holder as illustrated.

- Check that all four protrusions on the shaver are inserted securely.



Removing the carrying holder

Remove the carrying holder while pressing down on both sides.



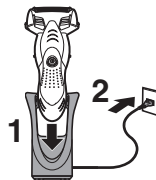
Charge

Charging the shaver

Perform the following steps to charge the shaver if it seems to lose the speed.
You can charge the shaver with the carrying holder attached.

1 Turn off the shaver and insert it in the AC adaptor until it clicks as illustrated.

- Wipe off any water droplets on the side terminals.
- If you charge the shaver with power switch turned on, it will start working when you remove from the AC adaptor.



2 Put the plug into a household outlet.

The charge indicator lamp glows red.

- Charging is completed after approx. 8 hours.
- When charging the shaver for the first time or when it has not been in use for more than 6 months, the charge indicator lamp may not glow for a few minutes, or the operating time may shorten. Please charge it for more than 20 hours in such cases.

3 Disconnect the plug after charging is completed.

- Charging the battery for more than 8 hours will not affect battery performance.
- Recommended ambient temperature for charging is 0 - 35 °C. The battery may not charge properly or at all under extreme low or high temperatures.
- The charge indicator lamp glows and stays on until the plug is disconnected from a household outlet.

You cannot operate the shaver while charging.

Shave

Using the shaver



1 Press the power switch.



2 Hold the shaver as illustrated above and shave.

Start shaving by applying gentle pressure to your face. Stretch your skin with your free hand and move the shaver back and forth in the direction of your beard. You may gently increase the amount of pressure as your skin becomes accustomed to this shaver. Applying excessive pressure does not provide a closer shave.

You can also use a pen grip to hold the shaver.



Caution

- Before shaving, check that the cleaning shutter is closed.
- Do not place your fingers on the power switch while using the shaver. This may cause the shaver to turn off.
- Do not use shaving creams or face cleansers containing scrubbing compounds as these may cause the outer foil to clog.

Using the trimmer **ES-SL41, ES-BSL4**

Slide the trimmer handle up. Place at a right angle to your skin and move downwards to trim your sideburns.



- We recommend using the shaver in an ambient temperature range of 0 - 35 °C. If used outside this range, the appliance may stop operating.

Clean

Cleaning the shaver

1. Remove the shaver from the AC adaptor.
2. Apply some hand soap and some water to the outer foil.
 - Close the cleaning shutter.
3. Turn the shaver on.



To remove light dirt

4. Slide the cleaning shutter until it clicks.



5. Clean the outer foil section with running water.

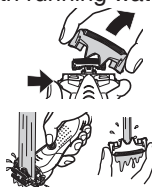


6. Turn the shaver off.
- Rinse with water and shake up and down several times to remove the water.

- Be careful not to hit the main body on the sink or any other object while draining the water. Failure to do so may cause malfunction.

For heavy dirt

4. Turn the shaver off after 10 - 20 seconds.
5. Remove the outer foil section and turn the shaver on.
6. Clean the shaver and the outer foil section with running water.



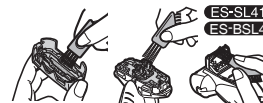
- Rinse with water and shake up and down several times to remove the water.

7. Wipe off any drops of water with a dry cloth.
8. Dry the outer foil section and the shaver completely in a shaded area.
- Open the cleaning shutter.
 - The outer foil section will dry faster if removed from the main body.
9. Attach the outer foil section to the shaver.

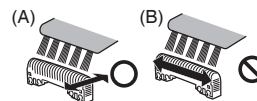


Cleaning with the brush

Clean the system outer foil, the shaver body and the trimmer (ES-SL41/ES-BSL4) using the long brush.



Clean the inner blades using the short brush by moving it in direction (A).



- Do not move the short brush in direction (B) as it will damage the inner blades and affect their sharpness.
- Do not use the short brush to clean the outer foils.

Replacing the system outer foil and the inner blades

system outer foil	once every year
inner blades	once every two years

Removing the outer foil section

Press the foil frame release button and lift the outer foil section upwards.

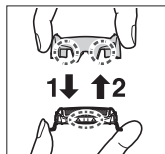
Attaching the outer foil section

After turning the water inlet surface to the front, securely attach the outer foil section to the shaver until it clicks.



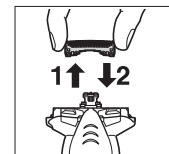
► Replacing the system outer foil

1. Press the system outer foil release buttons and pull down the system outer foil.
2. Align the water inlet surface and the system outer foil mark (△) and securely attach together.
 - The system outer foil cannot be reversely attached.
 - Always insert the system outer foil to the foil frame when attaching to the shaver.



► Replacing the inner blades

1. Remove the inner blades one at a time.
 - Do not touch the edges (metal parts) of the inner blades to prevent injury to your hand.
2. Insert the inner blades one at a time until they click.



► Replacement parts

Replacement parts are available at your dealer or Service Center.

Replacement parts for ES-SL41, ES-BSL4, ES-BSL2	System outer foil	WES9087
	Inner blades	WES9068

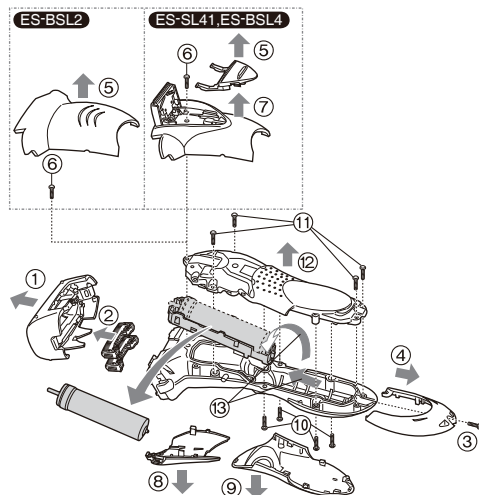
Removing the built-in rechargeable battery

Remove the built-in rechargeable battery before disposing of the shaver. Please make sure that the battery is disposed of at an officially designated location if there is one. Do not dismantle or replace the battery so that you can use the shaver again. This could cause fire or an electric shock.

Please contact an authorised service center.

- Remove the shaver from the AC adaptor when removing the battery.
- Please take care not to short-circuit the battery.

- Perform steps ① to ⑬ and lift the battery of ES-SL41/ ES-BSL4, Perform steps ① to ⑥ / ⑧ to ⑬ and lift the battery of ES-BSL2, and then remove it.



For environmental protection and recycling of materials
This shaver contains a Nickel-Metal Hydride battery. Please make sure that the battery is disposed of at an officially assigned location, if there is one in your country.

Specifications

Product name		Rechargeable Shaver
Product model		ES-SL41, ES-BSL4, ES-BSL2
Rated input		220 V~ 50 Hz 7 mA
Rated output		1.7 V--- 0.11 A
Charging time		Approx. 8 hours
Place of origin		China
Date of production		See engraving on the commodity.
Execution standard	Chinese standard	GB4706.1 appendix B GB4706.9
	Company standard	Q/SXWBMJ 6

This product is intended for household use only.

Panasonic

保修证

保修条款

有关保修期内Panasonic商品的保修（无偿修理），从购入之日起开始实施。

1.保修期内的商品只可在Panasonic认定维修店进行保修；保修时，请出示本保修证及购机发票。
以下两点需特别注意：

- 本保修证遗失后不再补发，请妥善保管。
 - 本保修证仅限于中华人民共和国内有效（香港、澳门、台湾三地区暂不可使用）。
- 2.自购入之日起在以下期间内，在正常使用中发生故障的情况下进行保修。

- 内刀头、外刀网、辅助装置、附件 ····· 有偿提供
- 整机（上述部件除外） ····· 2年内无偿

3.属下列情况之一者，即使在保修期内，也不能以保修对待，但是可以实行收费修理：

- 未按商品使用说明书要求使用、维护、保管而造成损坏的；
- 因不正确操作、电源不正常、破损（如：摔落等）而造成损坏的；
- 不经Panasonic认定维修店维修人员拆卸造成损坏的；
- 不能出示本保修证及有效购机发票的；
- 保修证上记录的信息与商品实物标识不符或者涂改的；
- 因不可抗力因素（如雷电、地震、火灾、水灾等）造成损坏的。

4.本保修条款只适用于消费者个人为生活消费需要而购买使用的场合，不适用于经营性等使用。

[商品信息]

商品名称: 电动剃须刀 产 地: 中国
商品型号: ES-SL41,ES-BSL4
ES-BSL2 制造编号:

[保修回执] 以下回执是保修的重要依据，请勿自行撕下

保修结算 4

商品型号: ES-SL41,ES-BSL4
ES-BSL2 制造编号:

保修结算 3

商品型号: ES-SL41,ES-BSL4
ES-BSL2 制造编号:

保修结算 2

商品型号: ES-SL41,ES-BSL4
ES-BSL2 制造编号:

保修结算 1

商品型号: ES-SL41,ES-BSL4
ES-BSL2 制造编号:

促销员留存

商品型号: ES-SL41,ES-BSL4
ES-BSL2 制造编号:



保修证管理编码印刷处：

[销售记录] 未完整记录以下信息将无法进行保修



销售日期:	发票号码:	
顾客姓名:	联系电话:	
顾客地址:	邮 编:	
销售店名称:	销售店电话:	
销售店地址:	邮 编:	

[维修记录]

维修店名称:	联系电话:	送修日:
维修店地址:	邮 编:	
故障内容:	故障原因:	
维修内容:		
维修员签字:	交验日期:	

维修店名称:	联系电话:	送修日:
维修店地址:	邮 编:	
故障内容:	故障原因:	
维修内容:		
维修员签字:	交验日期:	

维修店名称:	联系电话:	送修日:
维修店地址:	邮 编:	
故障内容:	故障原因:	
维修内容:		
维修员签字:	交验日期:	

本保修证因含有消费者个人信息，请妥善保管。
Panasonic客户咨询服务中心：400-810-0781
Panasonic官方网站：http://panasonic.cn
松下电器(中国)有限公司





MEMO

[illegible]

松下万宝美健生活电器(广州)有限公司 **(PWAPBLGZ)**
Panasonic Wanbao Appliances Beauty and Living (Guangzhou) Co., Ltd.

工厂地址： 广州市番禺区钟村万宝基地万宝北街 33 号
(Address): 33, Wanbao North Street, Wanbao Industry Zone, Zhongcun,
Panyu District, Guangzhou City, Guangdong Province, China
电话 (Tel): (020)84770333
传真 (Fax): (020)84773033
邮政编码 (Post Code): 511495
原产地： 中国

售后服务单位：松下电器(中国)有限公司
客户咨询服务中心：400-810-0781
官方网站：<http://panasonic.cn>

Ⓕ CN, EN

中国印刷
Printed in China
ES9210SL413405 S0512-20814
发行：2014年8月