

Panasonic®

使用说明书（另附保修证）
Operating Instructions

电动剃须刀
AC • Rechargeable Shaver

型号 ES-LA92
Model No.

中文	2
English	15



在使用本产品前，请仔细阅读本说明书并妥善保管。
Before operating this unit, please read these instructions completely and save them.

重要事项

▶ 使用剃须刀

注意 - 外刀网很薄，若使用不正确就可能造成损坏。使用剃须刀前，请确认刀网是否损坏。如果刀网已损坏请不要使用该剃须刀，因为这样会割伤皮肤。请勿用于修剪宠物的毛发。

曾接受过医疗电子仪器（如起搏器）移植手术的人士不允许将本设备接触此类仪器移植处的皮肤表面，否则会引发其功能障碍。

▶ 给剃须刀充电

除本型号（RE7-51）剃须刀专用充电器外，请勿使用其他任何电源线、充电器或自动清洗•充电装置充电。将充电器插入家用插座内，操作时双手要保持干燥。剃须刀在使用和充电过程中可能会发热。但是，这不是故障。不要将剃须刀放置在阳光直射或有其他热源的地方下进行充电。从家用插座上拔出充电器时请抓紧充电器。如果用力拉电源线，可能会损坏电源线。存放剃须刀时请拔出电源线。不要折弯电源线或将电源线绕在剃须刀上。

▶ 清洁剃须刀

警告 - 清洁剃须刀前请断开电源线，以防触电。

请保持两个内刀头同时装载的情况下进行清洗，否则有可能会损坏剃须刀。用清水清洗剃须刀，不要使用盐水或热水。不要将剃须刀长时间浸泡在水中。可用蘸肥皂水的布擦拭剃须刀。不要使用稀释剂，汽油或酒精擦拭剃须刀任何部位。

▶ 存放剃须刀

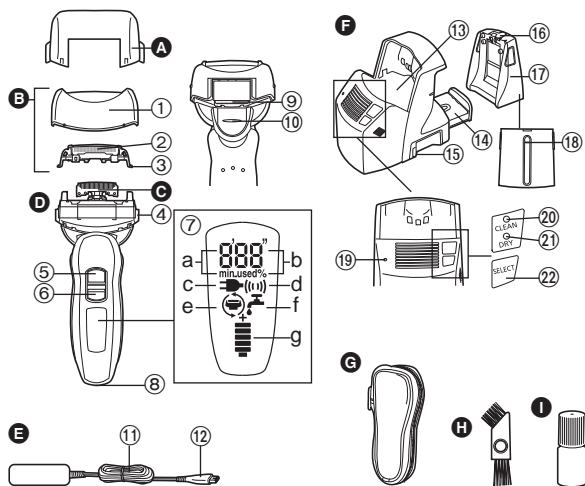
本品不宜供肢体、感官或精神上有残疾者、缺乏经验和知识者（包括儿童）使用，除非有人对此类人加以监督或者对本品的使用加以指导，且对使用者的安全能承担责任。请对儿童进行监督，避免其将本品视为玩具，引发危险。请妥善保管本说明书。请妥善处理本产品的包装袋，避免婴幼儿窒息等意外发生。

▶ 自动清洗•充电装置

不要在水里清洁充电器或自动清洗•充电装置，因为这会损坏它们或导致触电。当使用“干燥”程序时不要将剃须刀从自动清洗•充电装置上拿开。因为使用了加热器，刀片周围会变得非常烫，可能会灼伤您。

请将自动清洗·充电装置放在平稳的表面上。否则清洁液会溢出并污染皮革品或其他表面。万一清洁液溢出，请立即进行擦拭。自动清洗·充电装置可清洁内刀头和外刀网。请用清洁刷或水洗来清除未浸入清洁液或无法清洁区域所残留的胡须渣。

各部分名称



- A** 保护盖
- B** 外刀部
 - ① 外刀架
 - ② 外刀网
 - ③ 外刀网释放按钮
- C** 内刀头
- D** 机身
 - ④ 外刀架释放按钮
 - ⑤ 0/1 开关
 - ⑥ 开关锁定按钮
 - ⑦ 液晶显示屏
 - a. 已使用时间
 - b. 电池电量
 - c. 充电状态
 - d. 声波振动
 - e. 刀网 / 刀头检查
 - f. 清洁
 - g. 电池电量
- E** 充电器 (RE7-51)
 - ⑨ 修剪刀
 - ⑩ 修剪刀操纵杆
 - ⑪ 电源线
 - ⑫ 电源插头
- F** 自动清洗·充电装置
 - ⑬ 清洁托盘
 - ⑭ 清洁剂盒
 - ⑮ 插座
 - ⑯ 蓄水盒盖
 - ⑰ 蓄水盒
 - ⑱ 注水线
 - ⑲ 状态灯 (STATUS)
 - ⑳ 清洁灯 (CLEAN)
 - ㉑ 干燥灯 (DRY)
 - ㉒ 选择按钮
- G** 旅行包
- H** 清洁刷
- I** 润滑油
- ⑧** 电源线插孔

✂
✂

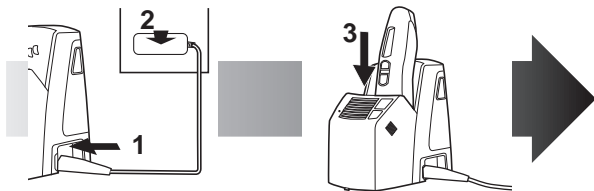
自动清洗·充电装置的工作环境

工作温度:	15-35℃
工作湿度:	小于 95%

- 如果在上述温度范围外使用自动清洗·充电装置，可能会发生以下问题。
 - 剃须刀需要的充电时间将会增加。
 - 充电器停止工作。
 - 在较低温度下使用充电器，会缩短可充电电池的使用寿命。在这种情况下，液晶显示屏上的指示灯将以每秒两次的频率闪烁。
- 如液晶显示屏上的指示灯不亮，请稍等片刻直至其亮起。
- 当您选择“干燥”程序时，根据环境，剃须刀可能不会完全烘干。在这种情况下，请使用干布拭去水珠。

使用自动清洗·充电装置

请完全擦干自动清洗·充电装置上的水滴，保证其在充电前是干燥的。



1 插入电源插头。

2 将充电器接通电源。

3 取下保护盖，然后装上剃须刀。

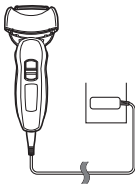
- 装载前请关闭剃须刀电源。
- 装剃须刀时确认外刀网是否变形或损坏。
- 液晶显示屏上的指示灯亮，充电开始。
- 液晶显示屏上的指示灯开始闪烁则表示充电完成。
(最多 1 小时后)
- 不使用剃须刀时，可以将剃须刀连接在自动

清洗 • 充电装置上或充电器上，以维持电池充足的电量。无须担心过度充电。

电源线充电

不使用自动清洗 • 充电装置时也可进行充电。

1. 将充电器电源线插头连接到剃须刀上。
2. 将充电器插头插入家用电源插座里。



交流电剃须

当电池电量低时，您也可以将剃须刀通过充电器连接至家用电源插座，利用交流电进行剃须。

- 如果剃须刀不能工作，请充电约 1 分钟后使用。

关于液晶显示屏

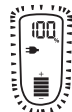
液晶显示屏显示电池的剩余电量，从 0% 至 100%，每 10% 一档。

充电时



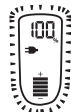
指示灯亮

充电完成后



指示灯每秒
闪烁一次。

充电完成 10
分钟后



指示灯每两秒
闪烁一次。

使用中



显示已使用时间。

- 指示灯 5 秒后熄灭。
- 显示时间在满 10 分钟后归为 [0' 00"]。

使用后



关闭剃须刀后，已使用时间和剩余电量交替显示。

以
母

电池电量不足时



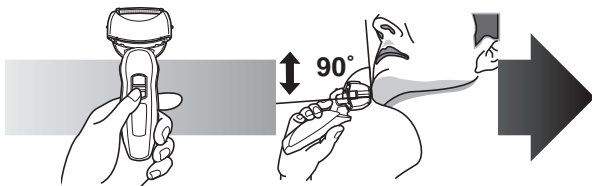
- 电量显示“10%”后您还可以使用剃须刀 1 到 2 次。
(根据使用情况而定。)

显示“10%”，开始闪烁。

- 充足电后大约可提供 14 次剃须所需的电量。
(以一次剃须 3 分钟计)

剃须

使用剃须刀



- 1 向下滑动开关锁定按钮，然后按 0/1 开关。
- 2 如上图所示握住剃须刀剃须。

轻轻地压向面部开始剃须。用另一只手绷紧脸上皮肤，逆着胡须生长方向前后移动剃须刀。当皮肤适应剃须刀之后您可以稍稍增加压力。但是施加过多的压力却有可能造成皮肤伤害。

►使用修剪刀操纵杆

您可以改变枢轴的动作。另外，使用修剪刀时将操纵杆向上滑动至“mm”。

FREE

可以移动剃须刀头。



LOCK

可以锁定剃须刀头。



mm

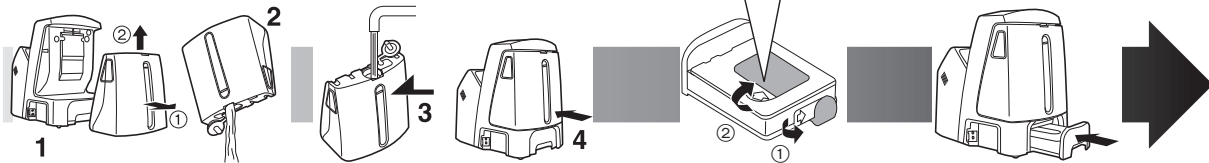
将修剪刀操纵杆往上推，以打开修剪刀。将修剪刀放置与皮肤成直角(90度)的位置，然后向下移动以修剪鬓角。



使用自动清洗·充电装置清洁

▶ 准备自动清洗·充电装置

从自动清洗·充电装置上拔出剃须刀和电器插头。



注意事项

- 请勿放在小孩可以接触到的地方。
- 只能用于清洁电动剃须刀的刀头。
- 如果清洁剂进入口中或眼睛，请立即采取紧急措施，并咨询医生。

1 取下蓄水盒，并打开蓄水盒盖。

2 倒掉剩余的清洁剂，并冲洗蓄水盒。

3 倒入自来水至注水线。

• 不要让自来水超过注水线。这可能会导致清洁剂溢出。

4 盖紧蓄水盒盖并装上蓄水盒。

5 剥去新清洁剂盒上的密封条。(2根)

• 水平握住清洁剂盒。(如果清洁剂盒太倾斜清洁剂会溢出。)

6 装上清洁剂盒。

- 当状态灯亮时更换清洁剂盒。使用下列图表作参考。

剃须	清洁	可重用
1次/天	1次/天	大约30次
	1次/3天	大约10次
	1次/周	大约4次

清洁液开启后有效期为6个月。如果清洁液超过6个月未使用，请扔掉清洁剂盒以及清洁液并购买新的装入使用。

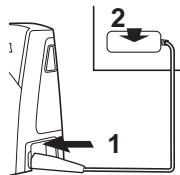
- 仅使用专为Panasonic剃须刀配制的清洁剂。
- 必须同时更换清洁剂盒以及蓄水盒里的清洁液。加水，或只换清洁剂盒或水，将导致清洁功能变差。
- 启动自动清洗·充电装置，清洁剂盒里浓缩的清洁剂将会注入蓄水盒内和水稀释，这样蓄水盒里的水就变成了清洁液。

► 清洁剃须刀

1 插入电源插头。

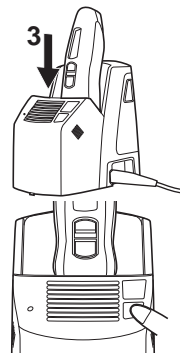
2 将充电器接通电源。

- 若用洗手液或任何其他清洁剂洗过剃须刀，请清除剃须刀上残留的任何皂液或水渍。








3 取下保护盖，然后装上剃须刀。

- 装载前请关闭剃须刀电源。
- 装剃须刀时请确认外刀网是否变形或损坏。



4 按下 [SELECT] 选择程序。

- 装剃须刀时“充电”进程将自动启动。
- 每次按下 [SELECT]，程序依次转换为“清洁/干燥/充电” → “干燥/充电” → “充电”。
- 程序被选择约6秒钟后启动。
- 如果电源切断，程序将自动中止。这种情况下请再次重新启动程序。
- 为避免清洁液溢出导致故障发生请不要拆开清洁剂盒或蓄水盒。

进程	程序选择指示	需要时间 (参考值) [在低温度下]
① 充电 		充电 (0 到 60 分钟)
② 清洁 / 干燥 / 充电 		清洁 (10 分钟) ▼ 干燥 (80 分钟 [170 分钟]) ▼ 充电 (0 到 60 分钟)
③ 干燥 / 充电		干燥 (180 分钟) ▼ 充电 (0 到 60 分钟)

►如果在“清洁 / 干燥 / 充电”进程中状态灯闪烁或亮起，请按照下述步骤操作。

以
母

闪烁

正确放置清洁剂盒，然后重新启动。



如果状态灯熄灭

继续下一个程序。



发现异常并更正后

按住 [SELECT] 并保持约 2 秒钟以关闭状态灯，然后重新启动。



当状态灯熄灭时

继续下一个程序。

亮起

从自动清洗·充电装置上取下剃须刀后，确认 [CLEAN] 灯已经熄灭。(小心刀片可能烫手或潮湿。) 确认蓄水池是否正确装上，蓄水池盖是否盖紧，自动清洗·充电装置是否水平放置。



当无异常发现时

此时需更换清洁剂盒以及蓄水池里的清洁液。倒掉蓄水池里旧的清洁液，然后给蓄水池充水。更换旧的清洁剂盒，然后重新启动。





当状态灯再次变亮时

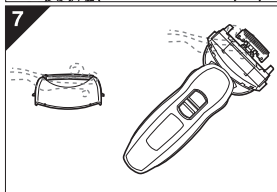
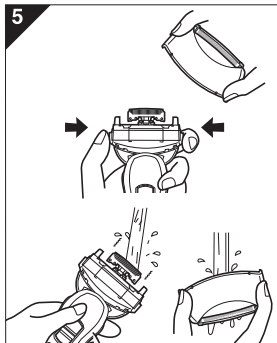
联系授权的维修中心。

不使用自动清洗 • 充电装置清洁剃须刀



当液晶显示屏上  出现时，还可以您使用声波洗净模式进行“sonic”（声波）振动清洗。

1. 断开电源线。
2. 在外刀网上涂少许洗手液。
3. 向下滑动开关锁定按钮以解除 0/1 开关的锁定。
4. 按下 0/1 开关 2 秒钟以上启动声波洗净模式进行“sonic”（声波）振动清洗。
 -  显示在液晶显示屏上。
 - 大约 20 秒钟后，它会自动关闭，或者按 0/1 开关关闭它。



5. 取下外刀部，按下 0/1 开关 2 秒钟以上启动声波洗净模式进行“sonic”（声波）振动清洗。使用流动水来清洁。
6. 用干布拭去水珠。
7. 将外刀部和剃须刀完全擦干。



左侧符号表示剃须刀可以用水清洗。

8. 将外刀部安装至剃须刀上。
 9. 给剃须刀上油。
- 警告：**剃须刀需与电源软线分离后才能用水清洗。

注意声波洗净模式


- 以声波洗净模式剃须可能会损伤皮肤。请先关闭剃须刀电源再重新打开即可取消声波洗净模式。
- 使用剃须刀时不要将手指放在 0/1 开关上。这样会导致剃须刀关闭或进入声波洗净模式。


润滑

为长期保持剃须的舒适度，建议使用随剃须刀一起提供的润滑油。

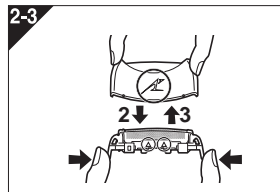
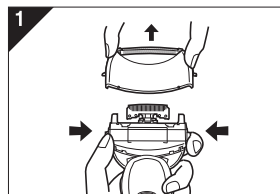
1. 关闭剃须刀。
 2. 给每个外刀网加一滴油。
 3. 推起修剪刀并加一滴油。
 4. 接通剃须刀电源，运转约 5 秒钟。
 5. 关闭剃须刀，使用软布从外刀网上拭去多余的润滑油。
- 如使用自动清洗 • 充电装置的话则无需给刀片涂油（清洁剂中含有润滑剂）。



更换外刀网和内刀头

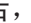
液晶显示屏上的  每年显示一次。（根据使用次数会有所不同。）当此信号开始显示时，我们建议您检查本产品的外刀网和内刀头。

- 按住 0/1 按钮 30 秒以上以清除  标识。建议外刀网每年更换一次，内刀头每两年更换一次，以维持剃须刀剃须性能。

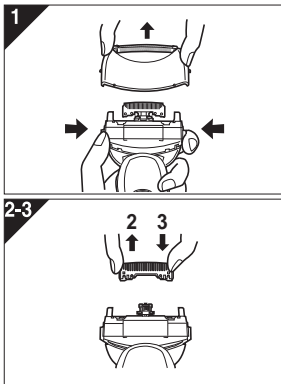
▶ 更换外刀网



1. 如图示，按下外刀架释放按钮并向上提起取出外刀部。
2. 如图所示，按下外刀网释放按钮，拉出外刀网。
3. 对齐外刀架  标识和外刀网  标识然后稳固地安装在一起。
 - 外刀网不能反向安装。
 - 安装时请注意将外刀网插入到外刀架内。

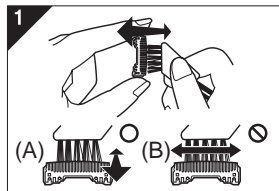
4. 将  标识转到前面以后，把外刀部稳固地安装到剃须刀直至其到位。

更换内刀头



1. 如图示，按下外刃架释放按钮并向上提起取出外刀部。
2. 如图示取下内刀头，每次取下一个。
 - 不要触摸内刀头的边沿（金属部分），以防止您的手受到损伤。
3. 如图示，安装内刀头时，每次插入一只内刀头，直至固定位置为止。

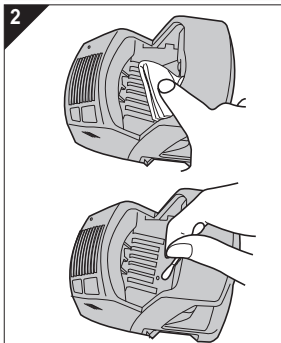
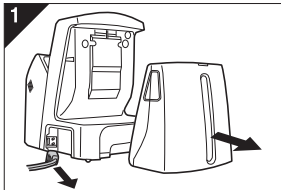
使用刷子清洁



1. 使用短刷，沿图示(A)的移动方向移动，清洁内刀头。使用长刷，清洁外刀网，剃须刀机身和修剪刀。
 - 请勿沿(B)方向移动短刷，因为这样将损坏内刀头，影响刀片的锋利度。
 - 请勿使用短刷清洁外刀网。

清洁自动清洗·充电装置

修剪下来的胡须屑可能会附着在自动清洗·充电装置的托盘里。请按照以下步骤清除胡须屑。建议每次更换清洁剂盒时同时完成此事。



1. 务必从自动清洗·充电装置上移除蓄水盒和电器插头。

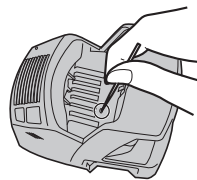
- 注意不要溢出清洁液。

2. 使用用水蘸湿的布或面巾纸，轻轻拭去任何附着在清洁托盘里的胡须屑。

- 使用蘸水的棉签清洁托盘的四角和不平之处。

- 不要用力拉清洁托盘底部的刀头橡皮保护套。如果用力拉橡皮会脱落。只需轻轻向上提即可。
- 警告 - 禁止用水洗或将水撒在充电器或自动清洗·充电装置上。否则可能会导致触电或短路。

► 当水没有从清洁托盘里排出时



修剪下来的胡须屑可能会堵塞清洁托盘底部的排水口。

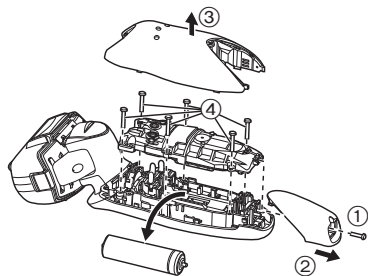
在这种情况下，您将无法使用清洁或干燥功能。

请使用牙签将修剪下来的胡须屑推向排水口。

取出内置式充电电池

本机内藏有可充电的电池，在消费者决定废弃本机前，请务必将电池从机器中取出。

- 分解剃须刀，取出电池前，一定要断开电源。
- 建议消费者在决定废弃剃须刀前，事先征求经销商或本公司指定维修点的意见，尽量延长剃须刀的使用寿命。
- 当消费者决定废弃剃须刀又不想自行分解机器取出电池时，建议消费者将器具送往本公司指定的维修站，由维修店对电池进行分解和回收。
- 电池务必废弃于政府规定的地方或回收处理单位。
- 按右图所示的①～④的顺序拆开本体，卸下电池。



环境保护与资源回收

此剃须刀使用锂电池。

如果您的国家有相关规定，请务必在指定处对旧电池进行统一处理。

规格

产品名称	电动剃须刀
产品型号	ES-LA92
马达电压	交流 100-240 V 50-60 Hz (自动电压转换)
额定电压	直流 3.6 V
充电时间	1 小时
原产地	本机：日本 充电器：中国 清洗·充电装置：中国
生产日期	请见商品上刻印
执行标准	GB4706.1 附录 B、GB4706.9

规格如有变更，恕不另行通知。

本产品仅适合家庭使用。

Important

► Using the shaver

Caution - The outer foil is very thin and can be damaged if not used correctly. Check that the foil is not damaged before using the shaver. Do not use the shaver if the foil etc. is damaged as you will cut your skin.

Persons using an implanted medical electronic device, such as a pacemaker, should not allow this unit to touch the skin where the medical electronic device is implanted because this may cause a malfunction.

► Charging the shaver

Do not use any power cord, AC adaptor or recharger other than one specifically designed for this model (RE7-51). Plug in the adaptor into a household outlet where there is no moisture and handle it with dry hands. The shaver and the recharger may become warm during use and charging. However, this is not a malfunction. Do not charge the shaver where it will be exposed to direct sunlight or other heat sources. Hold the adaptor when disconnecting it from the household outlet. If you tug on the power cord, you may damage it. The supply cord cannot be replaced. If the cord is damaged, the appliance should be scrapped.

► Cleaning the shaver

Warning - Disconnect the power cord from the shaver before cleaning it to prevent electric shock.

Keep both the inner blades inserted. If only one of the inner blades is inserted, the shaver may be damaged. If you clean the shaver with water, do not use salt water or hot water. Do not soak the shaver in water for a long period of time. Wipe it with a cloth dampened with soapy water. Do not use thinner, benzine or alcohol.

► Storing the shaver

Disconnect the power cord when storing the shaver. Do not bend the power cord or wrap it around the shaver. This appliance is not intended for use by persons (including children) with reduced physical, sensory or mental capabilities, or lack of experience and knowledge, unless they have been given supervision or instruction concerning use of the appliance by a person responsible for their safety. Children should be supervised to ensure that they do not play with the appliance. Keep these operating instructions in a safe place.

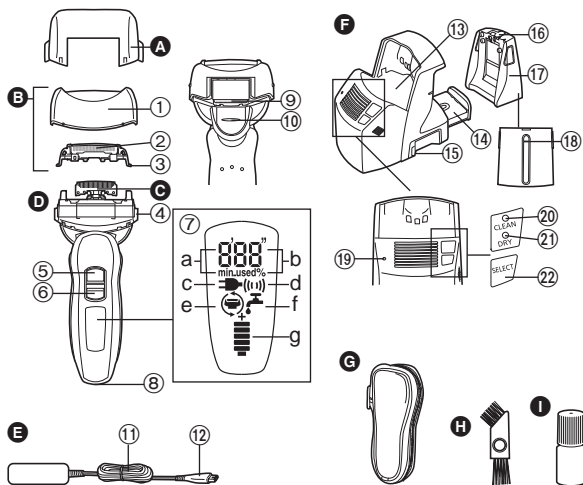
► Self-cleaning recharger

Do not clean the adaptor or the self-cleaning recharger in water as it will damage them or cause an electric shock. Do not remove the shaver from the self-cleaning recharger while using a course that includes the "Dry" function. A heater is used so the area around the blades becomes extremely hot and you may burn yourself.

Place the self-cleaning recharger on a level and stable surface. Otherwise the cleaning liquid may spill and discolor leather products or other surfaces. Wipe

it immediately. The self-cleaning recharger cleans the inner blades and the system outer foil. Brush or wash with water to remove beard trimmings in other areas.

Parts identification



- A** Protective cap
- B** Outer foil section
 - ① Foil frame
 - ② System outer foil
 - ③ System outer foil release buttons
- C** Inner blades
- D** Main body
 - ④ Foil frame release buttons
 - ⑤ 0/1 switch
 - ⑥ Switch lock button
 - ⑦ LCD panel
 - a. Used time
 - b. Battery capacity
 - c. Charge status
 - d. Sonic vibration
 - e. Foil/blade check
 - f. Clean
 - g. Battery capacity
- E** Adaptor (RE7-51)
 - ⑪ Power cord
 - ⑫ Appliance plug
- F** Self-cleaning recharger (Referred to as the "Recharger".)
 - ⑬ Cleaning tray
 - ⑭ Detergent cartridge
 - ⑮ Socket
 - ⑯ Water tank cap
 - ⑰ Water tank
 - ⑱ Water maximum line
 - ⑲ STATUS lamp
 - ⑳ CLEAN lamp
 - ㉑ DRY lamp
 - ㉒ SELECT button
- G** Soft case
- H** Cleaning brush
- I** Oil
- ⑧ Appliance socket

Operating environment for the self-cleaning recharger

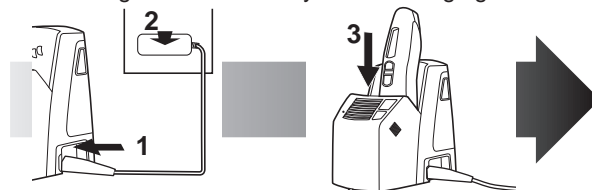
Operating temperature: 15-35 °C
Operating humidity: Less than 95%

- If you use the self-cleaning recharger in temperatures outside the above range, the following problems may occur.
 - The time it takes to charge the shaver increases.
 - The recharger stops functioning.
 - The lifespan of the rechargeable battery shortens. (Only when you use the recharger in lower temperatures.) In this case, the indicators on the LCD panel will blink twice every second.
- If the indicators on the LCD panel do not glow, wait for a short while until it glows.
- Depending on the environment, the shaver may not dry even if you select a course that includes the “Dry” function. In this case, wipe off any drops of water with a dry cloth.

Charge

Charging with the self-cleaning recharger

Thoroughly wipe off any drops of water on or around the recharger so that it is dry before charging it.



- 1 Insert the appliance plug.**
- 2 Plug in the adaptor.**
- 3 Remove the protective cap and then attach the shaver.**

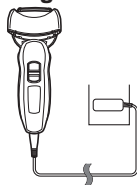
- Turn the shaver off before attaching.
- Check that the outer foil is not deformed or damaged when you are attaching the shaver.
- The indicators on the LCD panel glow and charging starts.
- Charging is completed when the indicators on the LCD panel blink. (Max. 1 hour later)
- You can keep the shaver attached to the recharger, or connected to the adaptor, when not using it to

maintain full battery capacity. You cannot overcharge the shaver.

Charging without the self-cleaning recharger

You can also charge without the recharger.

1. Insert the appliance plug into the shaver.
2. Plug in the adaptor into a household outlet.



Cord shaving

If you insert the appliance plug to the shaver and plug in the adaptor into a household outlet, you can use it even if the battery capacity is low.

- If the shaver does not work, continue charging it for approx. 1 minute.

About the LCD panel

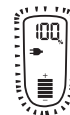
The LCD panel shows the remaining battery capacity from 0% to 100%, in 10% increments.

While charging



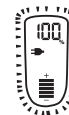
The indicators glow.

After charging is completed



The indicators blink once every second.

10 minutes after charging is completed



The indicators blink once every 2 seconds.

During use



- The used time is shown.
- The indicators turn off after 5 seconds.
 - The shown time returns to [0'00"] after 10 minutes.

After use



- The used time and the remaining battery capacity are shown alternately after turning off the shaver.

When the battery capacity is low



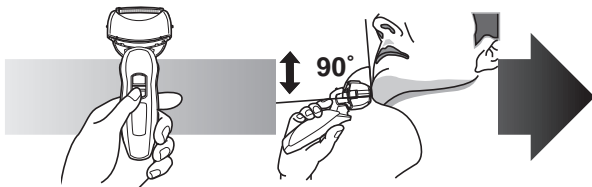
- You can shave 1 to 2 times after "10%" appears. (This will differ depending on usage.)

"10%" appears and ➡ blinks.

- A full charge will supply enough power for approx. 14 shaves of 3 minutes each.

Shave

Using the shaver



- 1 Slide the switch lock button downwards and press the 0/1 switch.**
- 2 Hold the shaver as illustrated above and shave.**

Start out shaving by applying gentle pressure to your face. Stretch your skin with your free hand and move the shaver back and forth in the direction of your beard. You may gently increase the amount of pressure as your skin becomes accustomed to this shaver. Applying excessive pressure does not provide a closer shave.

► Using the trimmer handle

You can change the pivot action. Also, slide the handle up to “mm” when using the trimmer.

FREE

You can move the shaver head.



LOCK

You can lock the shaver head.



mm

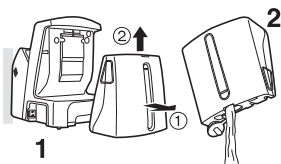
Slide the trimmer handle up. Place at a right angle to your skin and move downwards to trim your sideburns.



Cleaning with the self-cleaning recharger

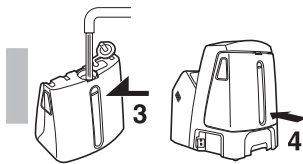
► Preparing the self-cleaning recharger

Remove the shaver and the appliance plug from the self-cleaning recharger.



1 Remove the water tank and then open the water tank cap.

2 Wash away the old cleaning liquid and then rinse the water tank.



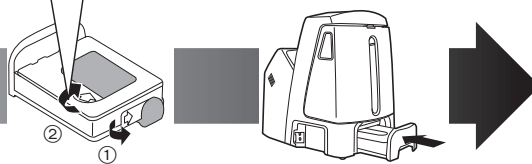
3 Pour tap water into the water tank.

- Do not let the water rise above the maximum water line. This may cause the cleaning liquid to spill.

4 Securely close the water tank cap and then attach the tank.

Precautions

- Keep out of reach of children.
- Only use to clean the blades of electric shavers.
- Carry out emergency measures if the Cleaning agent enters mouth or eyes, and consult a doctor.



5 Peel off the seals from the new detergent cartridge. (2 seals)

- Hold the detergent cartridge horizontally. (The detergent may spill if the detergent cartridge is tilted too much.)

6 Attach the detergent cartridge.

- Replace the detergent cartridge when the status lamp is illuminated. Use the below chart as a guide.

Shaving	Cleaning	Reusability
1 time/ day	1 time/day	approx. 30 times
	1 time/3 days	approx. 10 times
	1 time/week	approx. 4 times

The expiration date of the cleaning liquid is 6 months after it is opened. If you do not use the cleaning liquid for more than 6 months, throw away the detergent cartridge and the cleaning liquid.

- Only use self-cleaning recharger detergent for Panasonic shavers.
- Always change the detergent cartridge and the cleaning liquid in the water tank at the same time. Adding water, or changing just the detergent cartridge or the water, will result in deteriorated cleaning functions.
- If you operate the self-cleaning recharger, the concentrated detergent in the detergent cartridge dilutes and the water inside the tank will become a cleaning liquid.

▶ Cleaning the shaver

1 Insert the appliance plug.

2 Plug in the adaptor.

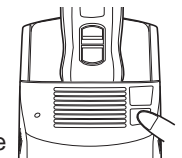
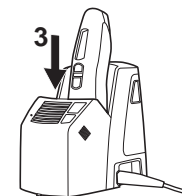
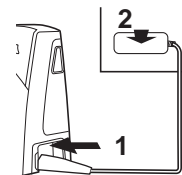
- Remove any soap or water on the shaver if it has been washed with hand soap or any other detergent.

3 Remove the protective cap and then attach the shaver.






- Turn the shaver off before attaching.
- Check that the outer foil is not deformed or damaged when you are attaching the shaver.

4 Press [SELECT] to select the course.

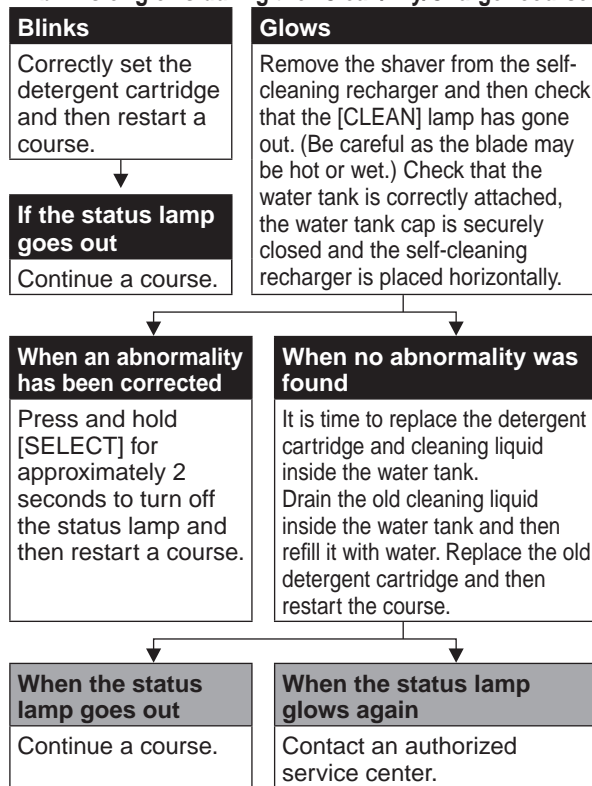
- The “Charge” course starts when attaching the shaver.
- Each time you press [SELECT], the course changes from “Clean/Dry/Charge” → “Dry/Charge” → “Charge”.
- The courses start approximately 6 seconds after they are selected.
- The course will be aborted if the power is cut off. In this case, perform the course again from the beginning.
- Do not detach the detergent cartridge or the water



tank as the cleaning liquid may spill causing a malfunction.


Course	Course selection indications	Time required (guide) [In the low temperature]
1 Charge 		Charge (0 to 60 min)
2 Clean/Dry/Charge 		Clean (10 min) ▼ Dry (80 min [170 min]) ▼ Charge (0 to 60 min)
3 Dry/Charge		Dry (180 min) ▼ Charge (0 to 60 min)

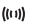
► Follow the steps outlined below if the status lamp blinks or glows during the “Clean/Dry/Charge” course.

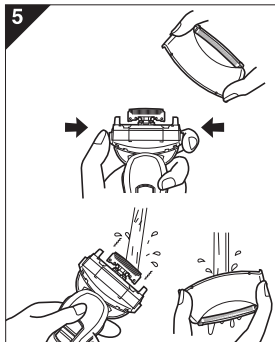


Cleaning the shaver without the self-cleaning recharger

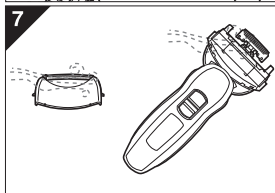



We recommend that you clean your shaver with the self-cleaning recharger or the turbo mode for “sonic” vibration cleaning when the faucet symbol  appears on the LCD panel.

1. Disconnect the power cord from the shaver.
2. Apply some hand soap and some water to the outer foil.
3. Slide the switch lock button downwards to unlock the 0/1 switch.
4. Press the 0/1 switch for more than 2 seconds to activate the turbo mode for “sonic” vibration cleaning.
 -  appears on the LCD panel.
 - After about 20 seconds, it will be automatically turned off, or you can turn it off by pressing the 0/1 switch.



5. Remove the outer foil section and press the 0/1 switch for more than 2 seconds to activate the turbo mode for “sonic” vibration cleaning and clean it with running water.
6. Wipe off any drops of water with a dry cloth.
7. Dry the outer foil section and the shaver completely.



 The mark on the left is for a washable shaver and indicates it can be cleaned with water.

8. Attach the outer foil section to the shaver.
9. Lubricate the shaver.

Caution for turbo mode


- Shaving in turbo mode may damage your skin. Turn the shaver off and then on again to cancel turbo mode.
- Do not place your fingers on the 0/1 switch while using the shaver. This may cause the shaver to turn off or enter turbo mode.


Lubrication

To maintain shaving comfort for a long time, it is recommended that the oil provided with the shaver is used.

1. Switch off the shaver.
 2. Apply one drop of oil to each of the outer foils.
 3. Raise the trimmer and apply a drop of oil.
 4. Switch the shaver on, and run it for approximately five seconds.
 5. Switch off the shaver, and wipe off any excess oil from the outer foils with a soft cloth.
- It is not necessary to oil the blades after using the self-cleaning recharger (lubricant is included in the cleaning detergent).

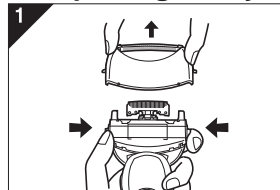
Replacing the system outer foil and the inner blades

 appears on the LCD panel once a year. (This will differ depending on usage.) We recommend checking the system outer foil and the inner blades when it appears.

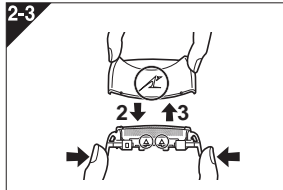
- Press the 0/1 switch for more than 30 seconds to delete .




system outer foil	once every year
inner blade	once every two years

Replacing the system outer foil

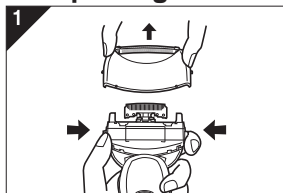


1. Press the foil frame release buttons and lift the outer foil section upwards as illustrated.

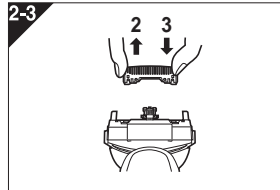


2. Press the system outer foil release buttons and pull down the system outer foil as illustrated.
3. Align the foil frame  mark and the system outer foil  mark and securely attach together.
 - The system outer foil cannot be reversely attached.
 - Always insert the system outer foil to the foil frame when attaching to the shaver.
4. After turning the  mark to the front, securely attach the outer foil section to the shaver until it clicks.

► Replacing the inner blades

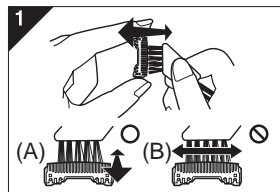


1. Press the foil frame release buttons and lift the outer foil section upwards as illustrated.



2. Remove the inner blades one at a time as illustrated.
 - Do not touch the edges (metal parts) of the inner blades to prevent injury to your hand.
3. Insert the inner blades one at a time until they click as illustrated.

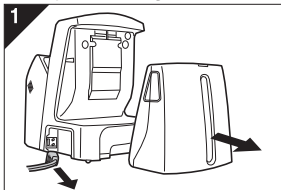
Cleaning with the brush



1. Clean the inner blades using the short brush by moving it in direction (A). Clean the system outer foil, the shaver body and the trimmer using the long brush.
 - Do not move the short brush in direction (B) as it will damage the inner blades and affect their sharpness.
 - Do not use the short brush to clean the outer foils.

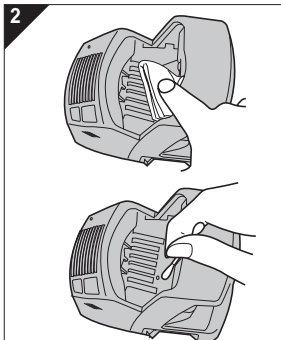
Cleaning the self-cleaning recharger

Beard trimmings may become attached to the cleaning tray of the self-cleaning recharger. Follow the steps below to remove them. We recommend doing this each time you change the detergent cartridge.



1. Be sure to remove the water tank and the appliance plug from the self-cleaning recharger.

- Be careful not to spill the cleaning liquid.

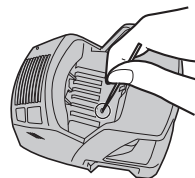


2. Gently wipe off any beard trimmings attached to the inside of the cleaning tray with a cloth or tissue paper dampened with water.

- Clean the corners and uneven parts of the cleaning tray with a cotton swab dampened with water.

- Do not pull hard on the rubber blade protector at the bottom of the cleaning tray. The rubber may come off if you pull hard on it. It is only necessary to pull it up slightly.
- **Warning** - Do not wash or apply water to the adaptor or self-cleaning recharger. Failure to observe this may cause electric shock or result in short circuits.

► When the water does not drain from the cleaning tray

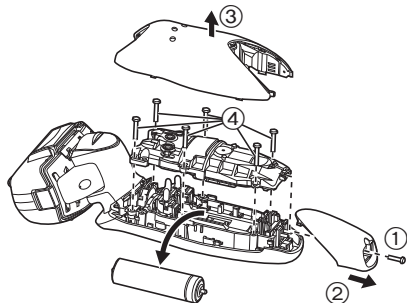


Beard trimmings may clog the drain at the bottom of the cleaning tray. In this case, you cannot clean or dry the shaver. Push the beard trimmings down through the drain with a tooth pick etc.

Removing the built-in rechargeable battery

Remove the built-in rechargeable battery before disposing of the shaver. Please make sure that the battery is disposed of at an officially designated location if there is one. Do not dismantle or replace the battery so that you can use the shaver again. This could cause fire or an electric shock. Replace it at an authorized service center.

- Disconnect the power cord from the shaver when removing the battery.
- Perform steps ① to ④ and lift the battery, and then remove it.



For environmental protection and recycling of materials

This shaver contains a Lithium-ion battery. Please make sure that the battery is disposed of at an officially assigned location, if there is one in your country.

SPECIFICATIONS

Product name	Shaver
Product model	ES-LA92
Power source	a.c 100-240 V 50-60 Hz
Motor voltage	d.c 3.6 V
Charging time	1 hour
Place of origin	Main body: Japan Adaptor: China Self-cleaning recharger: China
Produce date	Please see on the commodity to engrave
Execution standard	GB4706.1 appendix B GB4706.9

Specifications are subject to change without notice.
This product is intended for household use only.

进口商：松下电工（中国）有限公司
地址：北京市朝阳区建国路79号 华贸中心2号写字楼6层、7层703室
电话：86-10-59255988
邮政编码：100025

制造商：松下电工株式会社
地址：日本大阪府门真市大字门真1048番地

Panasonic Electric Works Co., Ltd.
1048, Kadoma, Osaka 571-8686, Japan

日本印刷
Printed in Japan
ES9700LA921K Y0709-0
发行：2009年7月