

# Panasonic®

## 使用说明书

### (家用) 美容修剪器

型号 ES-WF20  
ES-WF30



中文	3
English	15



## 使用说明书

(家用) 美容修剪器

型号 ES-WF20  
ES-WF30

## 目录

安全注意事项 .....	4
使用须知 .....	6
部件名称 .....	7
电池的安裝及壽命 .....	8
替換刀刃的安裝和拆卸方法 .....	9
美容修剪器的基本使用方法 .....	9
眉梳的安裝和使用方法 ( 仅限 ES-WF30 ) .....	12
美容修剪器的清潔 .....	13
故障排除 .....	14
規格 .....	15

感谢您购买这款 Panasonic 产品。


在使用本产品前，请仔细阅读本说明书并妥善保管，  
以备将来参考。


## 安全注意事项

为减少故障、触电、受伤、火灾、死亡以及设备或财产损坏的危险，请务必遵守以下安全注意事项。


### 标志说明


以下标志用于对因无视标志说明和使用不当而导致的危险、伤害和财产损失的程度进行分类和描述。

 **警告** 表示可能会导致重伤或死亡的潜在危险。

 **注意** 表示可能会导致轻伤的危险。


以下标志用于对需要遵循的说明的种类进行分类和描述。

 此标志用于提醒用户注意禁止采取的操作步骤。

 此标志用于提醒用户注意为了安全操作本产品而必须遵循的操作步骤。

 **警告**


请勿存放在儿童和婴幼儿的接触范围之内，请勿让儿童和婴幼儿使用。

 - 否则可能导致可拆卸零部件及干电池、清洁刷等被儿童和婴幼儿误食而发生事故和伤害。

 **发生异常和故障时请立即停止使用。**  
- 否则可能造成受伤或引发火灾等伤害事故。

 **注意**

请勿擅自改造、分解、修理。

 - 否则可能导致事故或受伤。需要修理时，请咨询购买的销售店或联系 Panasonic 授权的维修中心进行维修。

# ⚠ 注意



**请勿跌落本产品或让本产品受到强烈冲击。**  
- 否则可能导致受伤或产品受损。



**请勿与家人或他人共用。**  
- 否则可能导致皮肤感染或炎症。



**请勿用力按压刀刃。使用时，请勿让刀刃直接接触手指或指甲。**

**请勿有意弯曲修剪器的刀刃部分。**  
- 否则可能导致受伤或缩短刀刃寿命。



**请勿将电池投入火中或让电池短路，分解电池等。**  
- 否则可能导致受伤、爆炸或火灾。



**请勿在使用时用力过猛。避免在同一处反复刮剃和拍打。**  
- 否则可能导致皮肤疼痛、炎症或受伤。



**请勿给干电池进行充电。**  
- 否则可能导致受伤、爆炸或火灾。



**请勿连接电池的极性端子。**  
- 否则可能导致受伤、爆炸或火灾。



**遇到以下情况，请勿使用本产品。**

- 有皮肤过敏的人
  - 有过敏症的人
  - 损伤或患丘疹、皮疹、粉刺的皮肤
- 否则可能导致皮肤受伤。

**(对于第一次使用的用户，建议您在皮肤上使用修剪器时，动作要格外的轻。)**



**携带和保存时，请务必盖上保护盖。**  
- 否则可能导致受伤或缩短刀刃寿命。



**请于使用前检查刀刃是否有损坏和变形。**  
- 否则可能导致皮肤受伤。



**请保持连接电池的极性端子的清洁。**  
- 否则可能导致接触不良、短路或者受伤。

# 注意

请务必遵守电池上所表示的注意事项。

请确认电池的“+”“-”极，正确放入。

电池的电量耗尽时，请立即将其取出并务必置于政府规定的地方或回收处理单位。



请使用在有效期内的干电池。

2 周以上不使用，请将电池取出。

- 否则可能导致电池过热、破损、漏液污染周围环境和受伤。



使用后若出现皮肤炎症或其他不适，请停止使用并洽询皮肤科医生。

- 否则可能会使症状恶化。



请仅用于面部和颈部及手部。

- 否则可能会导致受伤。



请在皮肤干燥的情况下使用本产品。

· 勿使用香皂或面霜。

· 洗脸之后，应让皮肤干燥后再使用本产品。

- 否则可能会导致受伤。

## 使用须知

### ► 说明

· 请保持产品干燥。

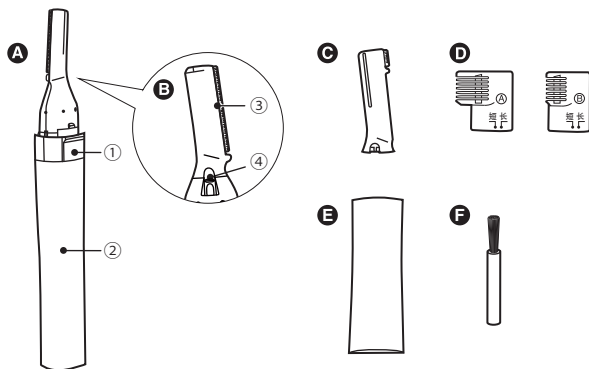
- 否则可能导致功能失常。



左侧符号表示“请勿用水清洗本产品”。

· 请勿使用涂料、稀释剂、苯、酒精或其它化学物品清洁本产品，或产品上沾有化妆品、护肤品等化学物品时，请用干软布清洁干净。

- 否则可能会导致本体发生破裂或褪色。



(图 1)

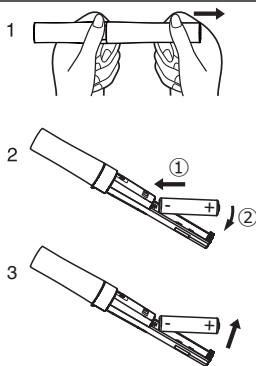
- A 本体**
  - ① 开关
  - ② 电池盖
- B 刀刃背面**
  - ③ 面部用刀刃
  - ④ 刀刃锁定扣
- C 眉部用刀刃 (仅限 ES-WF30)**
- D 眉梳(A)、(B) (仅限 ES-WF30)**
- E 保护盖**
- F 清洁刷**

## 电池的安裝及寿命



取下电池盖前请确认开关处于关闭状态。

1. 一边握住开关部位，一边取下电池盖。(图 2-1)
2. 装入 1 节 LR03 (7 号碱性干电池)。(图 2-2)
3. 安装回电池盖。
4. 电池的取出方法：从电池的“+”极处勾起即可取出。(图 2-3)



(图 2)

## 电池寿命

装了 Panasonic LR03 (7 号碱性干电池)，本产品约可使用 1 个月 (1 周使用 2 次，每次 5 分钟的情况下)。

请仅使用 LR03 (7 号碱性干电池)。

请妥善丢弃已用过的电池。



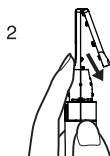
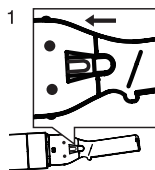
## 替换刀刃的安装和拆卸方法

(请根据要修剪的区域，选择安装面部用刀刃或眉部用刀刃。)

取出、安装刀刃前请确认开关处于关闭状态。

### ■取出刀刃 (图 3)

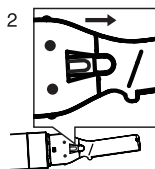
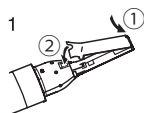
1. 依箭头所示，滑动刀刃锁定扣。(图 3-1)  
使用指甲，则更易于滑动。
2. 依箭头所示，取出刀刃。(图 3-2)



(图 3)

### ■安装刀刃 (图 4)

1. 将修剪器顶端的小钩插入刀刃的孔中进行安装。(图 4-1)
2. 依箭头所示，滑动刀刃锁定扣。(图 4-2)  
使用指甲，则更易于滑动。



(图 4)

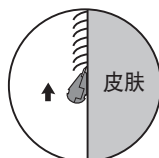
## 美容修剪器的基本使用方法

### 如何修剪脸部、颈部、手部茸毛

(使用面部用刀刃)

### ■握住刀刃靠近皮肤 (图 5)

打开开关，将刀刃贴在皮肤上。  
沿脸部茸毛生长的相反方向，慢慢移动刀刃。



(图 5)

## ■修剪方法 (图 6)

在想要修剪的区域，依箭头所示，慢慢移动修剪器。

### · 眉毛上方 (图 6-1)

从发际线向前额中央移动，然后回到发际线。

### · 脸颊 (图 6-2)

由脸部中央向外移动。

### · 上嘴唇 (图 6-3)

抵住嘴唇后进行修剪。

### · 鬓角 (图 6-4)

决定要修剪的鬓角长度，然后向下修剪。

### · 鼻翼两侧脸颊 (图 6-5)

用手指抵住皮肤，刀刃从中央向外移动。

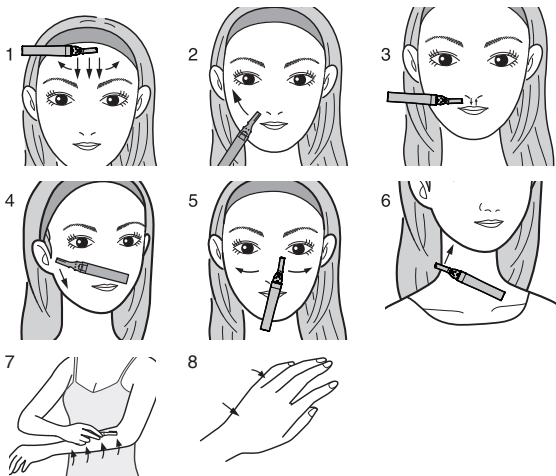
### · 颈部 (图 6-6)

用手指抵住皮肤，刀刃向上移动。

### · 手部 (图 6-7, 图 6-8)

从手臂外侧到内侧移动。(图 6-7)

从手指外侧到内侧移动。(图 6-8)



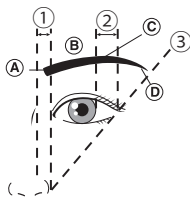
(图 6)

## 眉部名称说明 (仅限 ES-WF30)

### ■眉毛的基本形状 (图 7)

1. 眉头应在鼻子内侧与鼻翼外侧的垂直线范围 (①) 之内。
2. 眉峰应在虹膜外侧与眼睛外边缘的垂直线范围 (②) 之内, 并且在眉毛弓形部之上。
3. 眉尾是在鼻翼外侧与眼睛外边缘连线的延长线之内和之上 (③)。

- ① 眉头      ② 眉毛弓形部  
③ 眉峰      ④ 眉尾

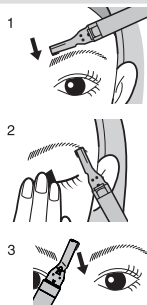


(图 7)

### 如何在眉毛上正确使用修剪器 (仅限 ES-WF30)

依箭头所示, 沿毛发长出的轮廓, 慢慢移动。

- 眉毛上方 (图 8-1)  
在眉毛侧面约 2-3mm 处停止。
- 眉毛下方 (图 8-2)  
一边捏住眼膜、伸展皮肤, 一边进行修剪。
- 眉间 (图 8-3)  
按照相应的方向进行修剪。



(图 8)

## 眉梳的安装和使用方法（仅限 ES-WF30）



眉梳**A**（图 9-1）

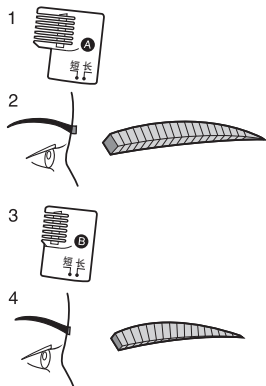
修剪长度：6~8mm

完成的形象：整体的长眉毛（平均长度），可获得自然的眉毛（图 9-2）

眉梳**B**（图 9-3）

修剪长度：2~4mm

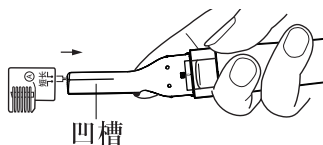
完成的形象：整体的短眉毛（平均长度），眉毛变得更易于描绘（图 9-4）



（图 9）

### ■安装眉梳时（图 10）

- 选择修剪长度，使眉梳上的“长”或“短”标志与刀刃上的凹槽对齐。
- 将眉梳插入眉刃，直至听见咔嗒一声。



（图 10）

## ■使用方法

将眉梳贴近皮肤进行梳剪。

(图 11)

(刀刃位于修剪线之处)

Ⓐ 皮肤

Ⓑ 修剪线

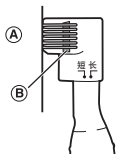
1. 将眉梳与您的眉毛对齐，  
然后从眉尾向眉头梳剪。

(图 12)

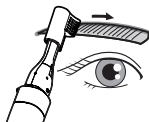
2. 重复操作，直至眉毛被修剪成想要的长度。

根据个人情况，眉头的毛发可能会朝上。在此情况下，建议您依毛发生长的相反方向移动（从前额向鼻子方向）。

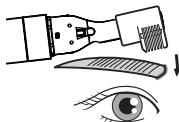
(图 13)



(图 11)



(图 12)



(图 13)

## 美容修剪器的清洁

清洁前请确认开关处于关闭状态。

1. 取下刀刃。

2. 请用清洁刷清洁。

· 请勿分解刀刃。

3. 用干软布擦掉修剪器上的毛发。

4. 清洁后，将刀刃安装回原来的位置。



## 故障排除

故障	可能的原因	纠正措施
使用过程中有异响。	▶ 替换刀刃未安装到位，连接部较松或损坏。	▶ 检查有无安装到位，确认连接部有无损坏。
开关打开但修剪器不工作。	▶ 未装干电池，或干电池正负极装反，或已没电。	▶ 确认干电池状况。

如果按照以上方法还不能解决，请咨询购买的销售店或联系 Panasonic 授权的维修中心进行维修。

## 规格

产品名称	美容修剪器
产品型号	ES-WF20, ES-WF30
额定电压	1.5 V ---
电池	使用 1 节 LR03（7 号碱性干电池） （需要另外购买）
重量	ES-WF20 约 23g（不包含电池） ES-WF30 约 27g（包含眉梳、刀刃， 不包含电池）
原产地	中国
生产日期	请见商品电池基台上方刻印。 具体方法：取下电池盖，可见电池基台上方刻印的 5 位数字，分别代表商品生产的年月日。
执行标准	Q/SXWBMJ 6

本产品仅适合家庭使用。

# Panasonic®

## Operating Instructions (Household) Facial Trimmer

Model No. ES-WF20  
ES-WF30

### Contents

---

<b>Safety precautions .....</b>	<b>16</b>
Intended use.....	19
Parts identification .....	20
Installation and life of battery.....	21
Installing or removing the replacement blade .....	22
How to use the facial trimmer .....	23
Installation and use method for eyebrow comb (only for ES-WF30) .....	25
Cleaning of facial trimmer.....	27
Troubleshooting .....	27
Specifications .....	28

Thank you for purchasing this Panasonic product.

**Before operating this unit, please read these instructions completely and save them for future use.**

## Safety precautions

To reduce the risk of malfunction, electric shock, injury, fire, loss of life, and damage to equipment or property, always observe the following safety precautions.

### Explanation of symbols

The following symbols are used to classify and describe the level of hazard, injury, and property damage caused when the notation is disregarded and improper use is performed.



#### **WARNING**

Denotes a potential hazard that could result in serious injury or death.



#### **CAUTION**

Denotes a hazard that could result in minor injury.

The following symbols are used to classify and describe the type of instructions to be observed.



This symbol is used to alert users to a specific operating procedure that must not be performed.



This symbol is used to alert users to a specific operating procedure that must be followed in order to operate the unit safely.



#### **WARNING**

**Do not store within the reach of children and infants.  
Do not let them use.**



- Doing so may cause accident or injury due to that the detachable parts, battery and the cleaning brush, etc. are ingested by children or infants.



**Immediately stop using when there is abnormality or failure.**

- Failure to do so may cause injury accidents such as injury or fire.





## CAUTION

**Do not modify, dismantle or repair by yourself.**



- Doing so may cause accident or injury. Please consult the distributor or contact the service center authorized by Panasonic for repair.

---



**Do not drop the appliance or impact the appliance intensively.**

- Doing so may cause injury or damage to the product.

---



**Do not share with your family or other people.**

- Doing so may cause skin infection or inflammation.

---



**Do not press the blade with a large force. When using, please do not touch the blade with fingers or nails.**

**Do not bend the blade part of the trimmer intentionally.**

- Doing so may cause injury or shorten the life of the blade.

---



**Do not throw the battery into fire, short the battery or dismantle the battery, etc..**

- Doing so may cause injury, explosion or fire.

---



**Do not use with an excessive large force. Avoid repeated trimming and beating at same location.**

- Doing so may cause pain, inflammation or injury to the skin.

---



**Do not charge the battery.**

- Doing so may cause injury, explosion or fire.

---



**Never connect the polarity terminal of the battery.**

- Doing so may cause injury, explosion or fire.



## CAUTION

Do not use the product in the following circumstance.



- For person with sensitive skin
- For person with allergies
- On skin with injury, pimples, rash or acne
- Doing so may cause injury to the skin.

(For first time users, it is recommended that the facial trimmer be used gently on the skin.)



**Be sure to attach the protective cap during carrying and storage.**

- Failure to do so may cause injury or shorten the life of the blade.



**Check if the blade is damaged or deformed before use.**

- Failure to do so may cause injury to the skin.



**Please ensure that the polarity terminals connecting a battery are clean.**

- Failure to do so may cause bad contact, short circuit or injury.

**Always follow the precautions on the battery.**

**Please confirm the “+” “-” poles of the battery and insert the battery correctly.**

**When the battery runs out, remove it immediately and be sure to place it at such places or recycling units required by the local government.**



**Please use the battery within the period of validity only. Remove the battery if the facial trimmer is not used for a long time.**

- Failure to do so may cause battery overheating, damage, leakage pollution to ambient environment or injury.

**Do not connect the polarity terminals, keep them clean to avoid short circuit.**



## CAUTION



If there is skin inflammation or other discomfort after use, please immediately stop using and consult the dermatologist.

- Failure to do so may cause symptom deterioration.



Apply the trimmer only for the face, the neck and the hands.

- Failure to do so may cause injury.



Please use the product when the skin is dry.

▪ Do not use soap or cream.

▪ After washing your face, dry your face before using the product.

- Failure to do so may cause injury.

## Intended use

### ► Notes

• Please keep the appliance dry.

- Doing so may cause a malfunction.

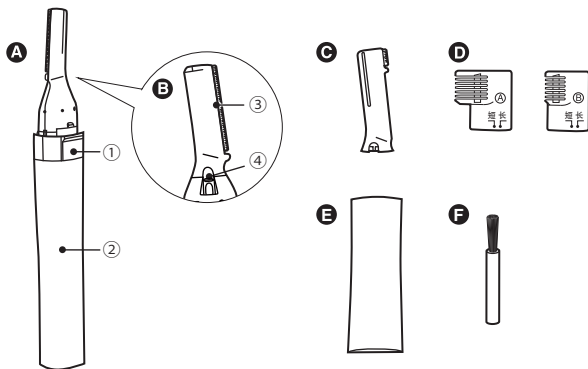


The left symbol denotes: "Do not washing the product with water."

• Do not use paint thinner, benzene, alcohol or other chemicals to clean the appliance, or use soft cloth to clean the product if there are certian chemicals like cosmetics and skin care products.

- Doing so may result in fractures or color fading on the unit.

# Parts identification



(Fig.1)

**A Main Unit**

- ① Switch
- ② Battery cover

**B Blade on rear side**

- ③ Face blade
- ④ Blade release button

**C Eyebrow blade (only for ES-WF30)**

**D Eyebrow combs ① and ② (only for ES-WF30)**

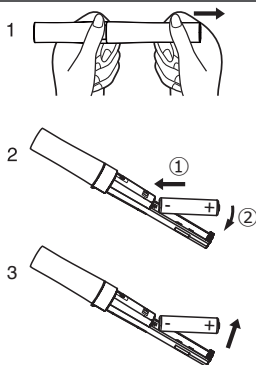
**E Protective cap**

**F Cleaning brush**

## Installation and life of battery

Please be sure to remove the battery cover only after the switch is off.

1. Hold the switch while remove the battery cover. (Fig.2-1)
2. Insert one LR03 (AAA alkaline battery). (Fig.2-2)
3. Attach the battery cover again.
4. To remove the battery: simply hook at the + polar of the battery. (Fig.2-3)



(Fig.2)

### Battery life

The facial trimmer can be used approximately one month with a Panasonic LR03 (AAA alkaline battery). (Assuming five minutes of use, twice a week.)

Only use LR03 (AAA alkaline battery).

Dispose used battery properly.

## Installing or removing the replacement blade

(Select the face blade or eyebrow blade for installation according to the areas to be trimmed.)

Please be sure to remove and attach the blade only after the switch is off.

### ■ Removing the blade (Fig.3)

1. Slide the blade release button in the direction of the arrow. (Fig.3-1)

Use your fingernail for easy sliding.

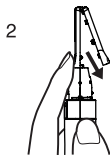
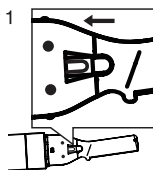
2. Remove the blade in the direction of the arrow. (Fig.3-2)

### ■ Attaching the blade (Fig.4)

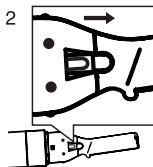
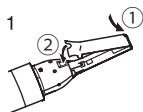
1. Attach by inserting the projection at the tip of the facial trimmer into the hole of the blade. (Fig.4-1)

2. Slide the blade release button in the direction of the arrow. (Fig.4-2)

Use your fingernail for easy sliding.



(Fig.3)



(Fig.4)

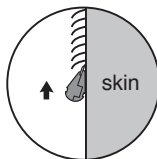
# How to use the facial trimmer

## How to trim downy hair on the face, neck and the hands

(Use the face blade)

### ■ Holding the blade to the skin (Fig.5)

Turn on the switch, lay the blade against the skin, and slowly move the blade against the flow of the hair.



(Fig.5)

### ■ How to trim (Fig.6)

Slowly move the facial trimmer in the direction of the arrow for the areas to be trimmed.

#### • Above the eyebrows (Fig.6-1)

Move from the hairline to the center of the forehead, and then back to the hairline.

#### • Cheek (Fig.6-2)

Move outward from the center of the face.

#### • Upper lip (Fig.6-3)

Lightly close the mouth for shaving.

#### • Sideburns (Fig.6-4)

Decide on the length of the sideburns and trim downward.

#### • Below the eyes (Fig.6-5)

Hold the skin with your fingers and move outward from the center.

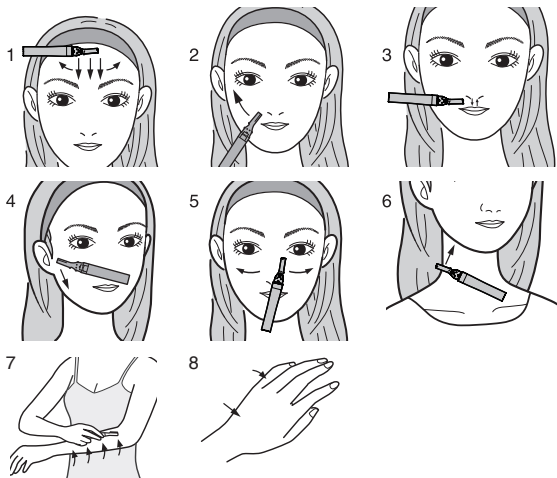
#### • Neck (Fig.6-6)

Hold the skin with your fingers and move upward.

#### • Hands (Fig.6-7, Fig.6-8)

Move from the outer side to the inner side of the arm. (Fig.6-7)

Move from the outer side to the inner side of the finger. (Fig.6-8)

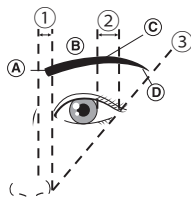


(Fig.6)

## Name & description of the eyebrow section (only for ES-WF30)

### ■ Basic eyebrow shape (Fig.7)

1. The eyebrow base should be within the scope of perpendicular line ( ① ) from the inner side and outer side of the nose wing.
2. The eyebrow crest should be within the scope of perpendicular line ( ② ) from the outer side of the iris and the outer edge of the eye, and above the eyebrow arch.
3. The eyebrow tip is within the line extending from and connecting the outer side of the nose wing and the outer edge of the eye ( ③ ).



(Fig.7)

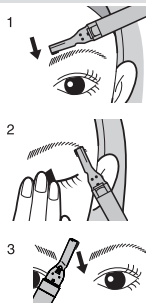
- |                 |                |
|-----------------|----------------|
| Ⓐ Eyebrow base  | Ⓑ Eyebrow arch |
| Ⓒ Eyebrow crest | Ⓓ Eyebrow tip  |



## How to use the trimmer correctly on the eyebrow (only for ES-WF30)

Slowly move the facial trimmer in the direction of the arrow along the hair sticking out the outline.

- Above the eyebrow (Fig.8-1)  
Stop at about 2-3 mm on the side the eyebrow.
- Blow the eyebrow (Fig.8-2)  
Trim while holding the eyelid and stretching the skin.
- Glabellum (Fig.8-3)  
Trim in the direction of the corresponding.



(Fig.8)

## Installation and use method for eyebrow comb (only for ES-WF30)

Eyebrow comb **A** (Fig.9-1)

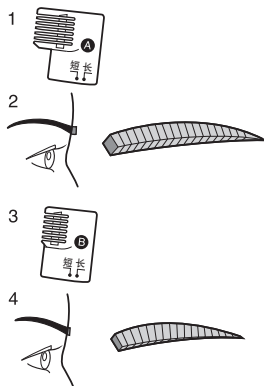
Trimming length : 6~8mm

Finished image: overall long eyebrow (even length) for a natural eyebrow (Fig.9-2)

Eyebrow comb **B** (Fig.9-3)

Trimming length: 2~4mm

Finished image: overall short eyebrow (even length) eyebrow becomes easier to draw (Fig.9-4)

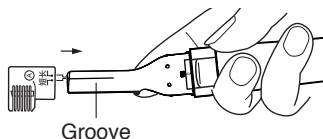


(Fig.9)

## ■ Attaching the comb

### (Fig.10)

- Select the trimming length and align the “Long” or “Short” mark with the groove in the eyebrow comb.
- Insert the eyebrow comb into the eyebrow blade, until hearing a sound of “click”.



(Fig.10)

## ■ How to use

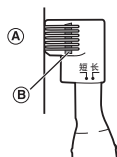
Use the eyebrow comb by holding it close to your skin. (Fig.11).

(The blade is at the position of the line.)

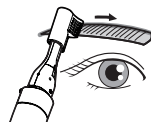
① Skin

② Trimming line

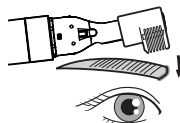
1. Align the comb with your eyebrow and comb from the end to the beginning of the eyebrow. (Fig.12)
2. Repeat until the eyebrow is trimmed to a desired length.



(Fig.11)



(Fig.12)



(Fig.13)

Depending on individuals, the hair at the eyebrow base may be pointing upward. In this case, it is recommended the comb be moved against the flow of the hair, in the direction from the forehead to the nose. (Fig.13)

## Cleaning of facial trimmer

Be sure to clean only after the switch is off.

1. Remove the blade.
2. Clean with the cleaning brush.
  - Do not disassemble the blade.
3. Wipe off trimmed hair with a dry soft cloth.
4. After cleaning, attach the blade back to its original position.

## Troubleshooting

Problem	Possible cause	Action
There is an abnormal sound during use.	The replacement blade is not installed in place. The connecting part is loose or damaged.	Check if it is installed in place, and be sure if the connecting part is damaged.
The switch is on, but the trimmer does not work.	Battery is not installed, or the positive pole and the negative pole is reversely installed, or the battery has no power.	Verify the status of the battery.

If the problems cannot be solved according to the above methods, please consult the distributor or contact the service center authorized by Panasonic for repair.

## Specifications

Product name	Facial Trimmer
Product model	ES-WF20, ES-WF30
Power source	1.5 V $\equiv$
Battery	LR03 (AAA alkaline battery)×1 (to be otherwise purchased)
Weight	ES-WF20 is approx. 23g (excluding the battery) ES-WF30 is approx. 27g (including eyebrow comb and blade, but excluding the battery)
Place of origin	China
Date of production	See the stamp mark on the battery base of the commodity. Specific method: remove the battery cover to see the 5-digit number stamped on the battery base, which represents the year, month and day of the production of the commodity.
Execution standard	Q/SXWBMJ 6

This product is intended for household use only.

# 保修证

## 保修条款

有关保修期内Panasonic商品的保修(无偿修理)，从购买之日起开始实施。

1.保修期内的商品只可在Panasonic认定维修店进行保修；保修时，请出示本保修证及购机发票。  
以下两点需特别注意：

- a. 本保修证遗失后不再补发，请妥善保管。
- b. 本保修证仅限于中华人民共和国国内有效(香港、澳门、台湾地区暂不可使用)。

2.自购入之日起在以下期间内，在正常使用中发生故障的情况下进行保修。

- 面部用刀刃、肩部用刀刃、眉梳、清洁刷及其配件 ···· 有偿提供
- 整机(除上述部件外) ······ 2年内无偿提供

3.属下列情况之一者，即使在保修期内，也不能以保修对待，但是可以实行收费修理：

- a. 未按商品使用说明书要求使用、维护、保管而造成损坏的；
- b. 因不正确操作、电源不正常、破损(如：掉落等)而造成损坏的；
- c. 不经Panasonic认定维修店维修人员拆卸造成损坏的；
- d. 不能出示本保修证及有效购机发票的；
- e. 保修证上记录的信息与商品实物标识不符或者涂改的；
- f. 因不可抗力因素(如雷电、地震、火灾、水灾等)造成损坏的。

4.本保修条款只适用于消费者个人为生活消费需要而购买使用的场合，不适用于经营性等使用。

### 【商品信息】

商品名称：美容修剪器 产地：中国  
商品型号：ES-WF20, ES-WF30 制造编号：

【保修回执】以下回执是保修的重要依据，请勿自行撕下

商品型号：ES-WF20, ES-WF30 制造编号：

保修结算4

商品型号：ES-WF20, ES-WF30 制造编号：

保修结算3

商品型号：ES-WF20, ES-WF30 制造编号：

保修结算2

商品型号：ES-WF20, ES-WF30 制造编号：

保修结算1

商品型号：ES-WF20, ES-WF30 制造编号：

促销员留存

**保修证管理编码印刷处:**

**[销售记录] 未完整记录以下信息将可能无法进行保修**

销售店  
(盖章)

销售日期: \_\_\_\_\_ 发票号码: \_\_\_\_\_ 安装调试日期: \_\_\_\_\_  
顾客姓名: \_\_\_\_\_ 联系电话: \_\_\_\_\_  
顾客地址: \_\_\_\_\_ 邮 编: \_\_\_\_\_  
销售店名称: \_\_\_\_\_ 销售店电话: \_\_\_\_\_  
销售店地址: \_\_\_\_\_ 邮 编: \_\_\_\_\_

**[维修记录]**

维修店名称: \_\_\_\_\_ 联系电话: \_\_\_\_\_ 送修日: \_\_\_\_\_  
维修店地址: \_\_\_\_\_ 邮 编: \_\_\_\_\_  
故障内容: \_\_\_\_\_ 故障原因: \_\_\_\_\_  
维修内容: \_\_\_\_\_  
维修员签字: \_\_\_\_\_ 交验日期: \_\_\_\_\_

维修店名称: \_\_\_\_\_ 联系电话: \_\_\_\_\_ 送修日: \_\_\_\_\_  
维修店地址: \_\_\_\_\_ 邮 编: \_\_\_\_\_  
故障内容: \_\_\_\_\_ 故障原因: \_\_\_\_\_  
维修内容: \_\_\_\_\_  
维修员签字: \_\_\_\_\_ 交验日期: \_\_\_\_\_

维修店名称: \_\_\_\_\_ 联系电话: \_\_\_\_\_ 送修日: \_\_\_\_\_  
维修店地址: \_\_\_\_\_ 邮 编: \_\_\_\_\_  
故障内容: \_\_\_\_\_ 故障原因: \_\_\_\_\_  
维修内容: \_\_\_\_\_  
维修员签字: \_\_\_\_\_ 交验日期: \_\_\_\_\_

Panasonic客户咨询服务中心: 400-810-0781

Panasonic官方网站: <http://panasonic.cn>

松下电器(中国)有限公司

[illegible]

松下万宝美健生活电器(广州)有限公司 **(PWAPBLGZ)**  
Panasonic Wanbao Appliances Beauty and Living (Guangzhou) Co., Ltd.

工厂地址：广州市番禺区钟村万宝基地万宝北街 33 号

(Address): 33, Wanbao North Street, Wanbao Industry Zone, Zhongcun,  
Panyu District, Guangzhou City, Guangdong Province, China

电话 (Tel): (020)84770333

传真 (Fax): (020)84773033

邮政编码 (Post Code): 511495

原产地： 中国

Panasonic 客户咨询服务中心：400-810-0781

Panasonic 官方网站：<http://panasonic.cn>

中国印刷

Printed in China

ES9700WF301405 Y0513-0