

# Panasonic®

Facial Trimmer

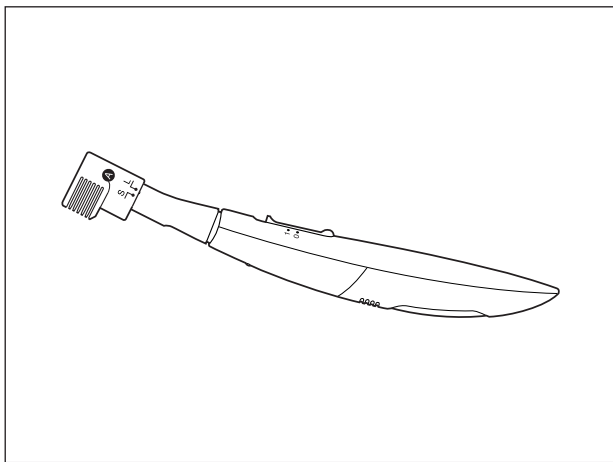
美容修剪器

Model No.ES2113

型号 ES2113

## Operating Instructions

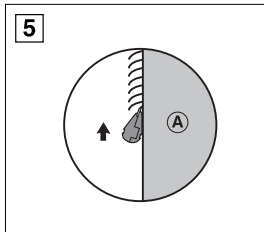
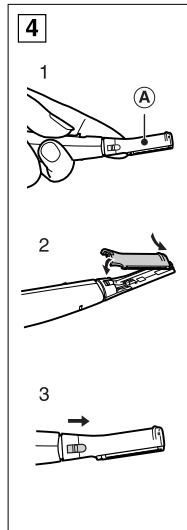
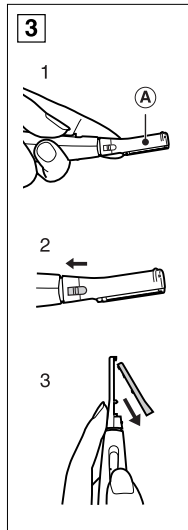
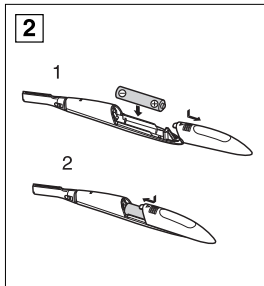
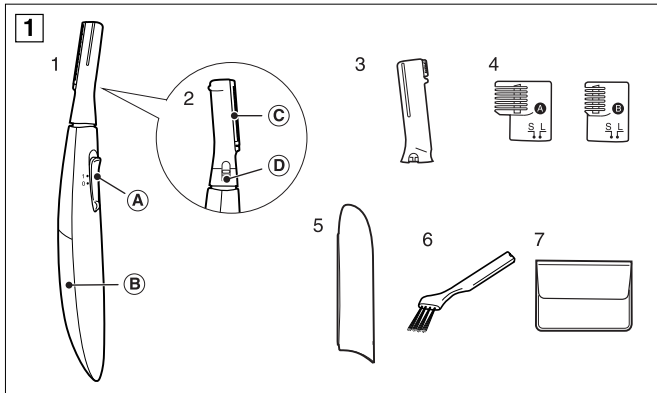
## 使用说明书

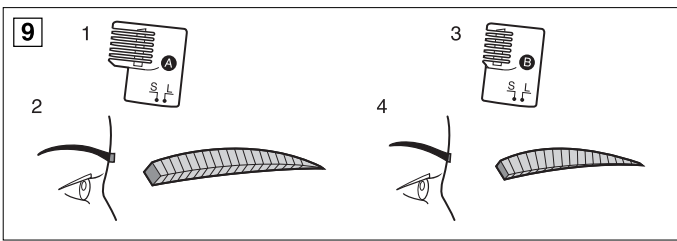
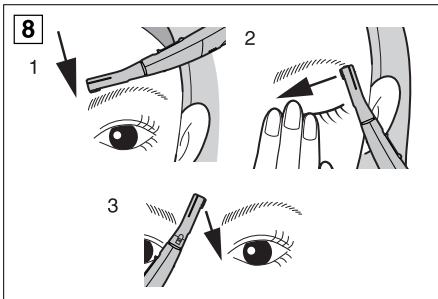
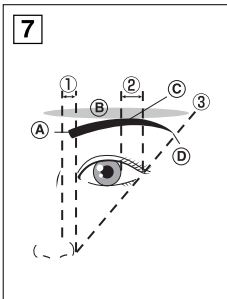
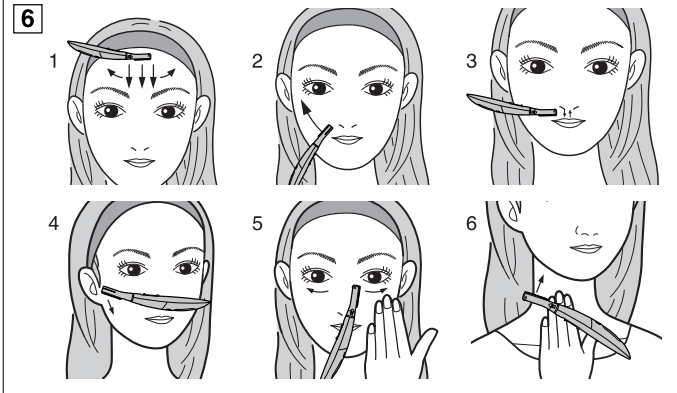


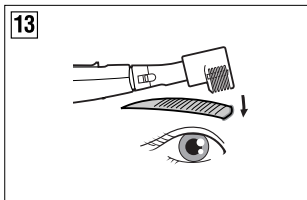
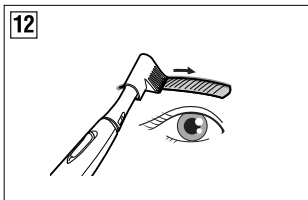
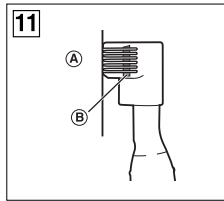
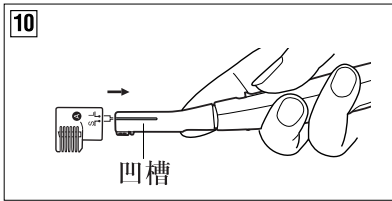
Before operating this unit, please read these instructions completely.  
Thank you for purchasing the Panasonic Facial Trimmer Model No.ES2113.

在使用前，请仔细阅读此说明书。

承蒙选购Panasonic ES2113型美容修剪器，在此谨致谢意。







## INDEX

中文 ..... 5

ENGLISH ..... 9

## 安全注意事项

为确保该修剪器的正确操作，使用前请仔细地阅读全部安全注意事项。

请妥善保管本使用说明书。

遇到下列情况，请勿使用该修剪器。

- 有皮肤过敏的人
- 有过敏症的人
- 患丘疹或皮疹的皮肤
  - 否则，可能会导致皮肤受伤。
 (对于第一次使用的用户，建议您在皮肤上使用修剪器时，动作要格外轻。)

请勿在带水的情况下使用该修剪器。

- 勿使用香皂或面霜。
- 洗脸之后，应让皮肤干燥后再使用该修剪器。

只能在您的面部和颈后部使用该修剪器。

- 请勿在头部或腋下等处使用该修剪器。

请勿有意弯曲修剪器的刀头部分。

- 请勿在其刀头部分强行用力，否则可能会将其损坏。

请勿擅自修理、拆卸或改造该修剪器。

- 否则，可能会导致伤害。

使用之前，一定要确认刀头有无破损。

- 否则，可能会导致皮肤受伤。请勿将眉毛梳子安装在脸部茸毛修剪刀头上。

使用后，一定要装好保护盖。

## 部件名称(图1)

- 本体(图1-1)
  - Ⓐ 开关
  - Ⓑ 电池盖
- 刀头背面(图1-2)
  - Ⓒ 脸部茸毛修剪刀头
  - Ⓓ 刀头锁定扣
- 眉毛修剪刀头(图1-3)
- 眉梳A、B(图1-4)
- 保护盖(图1-5)
- 清洁刷(图1-6)
- 装附件小包(图1-7)

## 电池的安装(图2)

(干电池另售)

1. 只有在关闭电源开关后，才能取下电池盖。(图2-1)
2. 装入7号碱性干电池。(图2-1)
  - 注意：装入干电池时，要保持正确的极性。
3. 装好电池盖。(图2-2)

## 电池寿命

- 用Panasonic7号碱性干电池, 该修剪器约可使用一个月。(假定每周使用2次, 每次5分钟。)

使用其它类型的电池时, 由于电池电量较低, 因此可能会导致使用时间的缩短。

- 如果打算长时间不使用修剪器时, 请取出电池。(否则, 可能会导致电池漏液或漏气, 从而导致修剪器损坏。)
- 若发生电池漏液, 请停止使用修剪器。将修剪器交给经销商或指定的特约维修店进行检查和修理。
- 请妥善丢弃旧电池。

## 刀头的安装和取出(图3和4)

(请根据要修剪的区域, 选择安装脸部茸毛修剪刀头或眉毛修剪刀头。)

### ■取出刀头时(图3)

1. 用手指抵住修剪器的刀头部分, 使其不要过分摆动。(图3-1)  
① 刀头部分
2. 依箭头所示, 滑动刀头锁定扣。(图3-2)  
使用指甲, 则更易于滑动。
3. 依箭头所示, 取出刀头。

(一边向下滑动, 一边外拉。)(图3-3)

### ■安装刀头时(图4)

1. 用手指抵住修剪器的刀头部分, 使其不要过分摆动。(图4-1)  
① 刀头部分
2. 将修剪器顶端的小钩插入刀头的孔中进行安装。(图4-2)
3. 依箭头所示, 滑动刀头锁定扣。(图4-3)  
使用指甲, 则更易于滑动。

## 修剪脸部茸毛时

(使用脸部茸毛修剪刀头)

### ■握住刀头靠近皮肤(图5)

- 将刀头贴在皮肤上
- 沿脸部茸毛生长的相反方向, 慢慢移动刀头。  
① 皮肤

### ■修剪方法(图6)

在想要修剪的区域, 依箭头所示, 慢慢移动修剪器。

- 眉毛上方(图6-1)  
从发际线向前额中央移动。然后, 回到发际线。
- 脸颊(图6-2)  
脸部中央向外移动。
- 上嘴唇(图6-3)  
请伸展您的上嘴唇。

- 鬓角(图6-4)  
决定鬓角的长度, 然后向下修剪。
- 鼻翼两侧脸颊(图6-5)  
用手指抵住皮肤, 然后从中央向外移动。
- 颈后部(图6-6)  
用手指抵住皮肤, 然后向上移动。

## 修剪您的眉毛时

### ■眉毛的基本形状(图7)

- ①眉毛是在鼻子内侧和外侧延长线之内。
- ②眉峰是在眼睛和虹膜外边缘延长线的眉毛弓形部之上。
- ③眉尾是在鼻子外侧和眼睛外边缘连线的延长线之内和之上。

注意: 眉毛弓形部位于眉毛凸出之处。

- ①眉头
- ②眉毛弓形部
- ③眉峰
- ④眉尾

### 在眉毛上使用修剪器(图8)

依箭头所示, 沿毛发长出的轮廓, 慢慢移动。

- 眉毛上方(图8-1)

在眉毛侧面约2-3mm处停止。

- 眉毛下方(图8-2)  
一边捏住眼睑、伸展皮肤, 一边进行修剪。
- 额部(图8-3)  
一边对着不同的部位, 一边进行修剪。

### 眉梳(图9)

#### 眉梳A(图9-1)

修剪长度: 6 ~ 8mm

完成的形象: 整体的长眉毛(平均长度)  
可获得自然的眉毛(图9-2)

#### 眉梳B(图9-3)

修剪长度: 2 ~ 4mm

完成的形象: 整体的短眉毛(平均长度)  
眉毛变得更易于描绘  
(图9-4)

### 安装眉梳时(图10)

- 用手指抵住修剪器的刀头部分, 使其不要过分摆动。
- 选择修剪长度, 然后将眉毛修剪刀头插入眉梳内, 直至听见咔嚓一声。
- 使眉梳上的L(长)或S(短)标志与刀头上的凹槽对齐。

### ■使用方法(图11)

将眉梳贴近皮肤进行梳剪。

**Ⓐ皮肤**

刀头位于修剪线之处。

**Ⓑ修剪线**

1. 将眉梳与您的眉毛对齐，然后从眉尾向眉头梳剪。(图12)
2. 重复操作，直至眉毛被修剪成想要的长度。
  - 根据个人情况，眉头的毛发可能会朝上。在此情况下，建议您依毛发生长的相反方向移动(从前额向鼻子方向)。(图13)

**清洁**

(必须关闭电源开关)

1. 取下刀头。
2. 请用清洁刷清洁。
  - 请勿分解刀头
3. 用干软布擦掉修剪器上的一切毛发。
4. 清洁后，将刀头安装在原来的位置。

**注意**

- 绝对勿在水中洗涤该修剪器。

**规格**

|      |                            |
|------|----------------------------|
| 电源方式 | 干电池式                       |
| 电池类型 | 1节7号(LR03)碱性干电池(干电池另售)     |
| 重量   | 约20克(装上脸部修剪刀头及保护盖时, 不含干电池) |

- 本修剪器符合Q/SXDGWB 6标准。

- 否则，可能会导致功能失常。

- 请勿使用酒精、稀释剂、苯或指甲油去除剂，来清洁该修剪器。

- 否则，可能会导致该修剪器功能失常、破裂或变色。请用干软布或浸有少量香皂水的软布，擦拭该修剪器。

- 请将该修剪器保存在孩子拿不到的地方。

**售后服务**

在保证该产品品质优良的同时，您将享有我们的免费服务保证。从购买之日起二年内，若发生任何因制造工艺或原器件造成之损坏，我们将为您提供免费门市维修服务，请填写附带的保修证(说明书内)并向购买店索取发票或有效购买凭证，以备万一发生之使用，而不造成您的经济损失(详情见保修证)。无论在保修期内或保修期后，您皆可在服务中心或特约维修店获得优质的维修服务。如有任何问题，请与我们联系。



## Safety Precautions

To ensure proper operation of this appliance, please read carefully all the safety precautions before use. Please keep the instructions well. Do not use the appliance in the following instances:

- For person with sensitive skin
- For person with allergies
- On skin with pimples or rash
  - Doing so may result in injury to the skin. (For first time users, it is recommended that the facial trimmer be used gently on the skin.)

Do not use the appliance with water.

- Do not use soap or cream.
- After washing your face, dry your face before using the appliance.

Use the appliance only on your face or nape.

- Do not use the appliance on areas such as underarm and head.

Do not purposely bend the head of the trimmer.

- Applying unnecessary force to the head may damage it .

Do not attempt to repair, disassemble or modify the appliance by yourself.

- Doing so may result in injury.

Before use, check that the blade is not deformed.

- Failure to do so may result in injury to the skin.

Do not attach the eyebrow comb to the downy hair blade.

Always reattach the cap after use.

## Part names (Fig.1)

- Main Unit (Fig.1-1)
  - Ⓐ Switch
  - Ⓑ Battery cover
- Blade on Rear Side (Fig.1-2)
  - Ⓒ Downy hair blade
  - Ⓓ Blade release button
- Eyebrow blade (Fig.1-3)
- Eyebrow comb (Fig.1-4)
- Cap (Fig.1-5)
- Cleaning brush (Fig.1-6)
- Soft attachment case (Fig.1-7)

## Inserting the battery (Fig.2)

(Battery sold separately.)

1. Be sure to remove the battery cover only after the switch is off. (Fig.2-1)
2. Insert one AAA size battery. (Fig.2-1)
  - Note: Insert the battery in the correct polarity.
3. Attach the battery cover.(Fig.2-2)

## ■ Battery life

- The facial trimmer can be used approximately one month with a Panasonic AAA alkaline battery. (Assuming five minutes of use , twice a week.)

The use of another type of battery may result in a shorter operating time due to low battery power.

- Remove the battery if the facial trimmer is not used for a long period of time.(Failure to do so may result in leakage of liquid or gas from the battery and cause damage

to the facial trimmer.)

- If liquid leaks from the battery, stop using the facial trimmer. Bring the facial trimmer to your dealer for inspection and repair.
- Dispose used battery properly.

## Attaching and removing the blade (Fig.3 and 4)

(Attach the downy hair blade or eyebrow blade according to the area to be trimmed.)

### ■ Removing the blade (Fig.3)

1. Support the head of the trimmer with your finger so that it does not swing excessively. (Fig.3-1)
  - Ⓐ Head
2. Slide the blade release button in the direction of the arrow. (Fig.3-2)  
Use your fingernail for easy sliding.
3. Remove the blade in the direction of the arrow.(Pull while sliding downward.) (Fig.3-3)

### ■ Attaching the blade (Fig.1)

1. Support the head of the trimmer with your finger so that it does not swing excessively. (Fig.4-1)
  - Ⓐ Head
2. Attach by inserting the projection at the tip of the facial trimmer into the hole of the blade. (Fig.4-2)
3. Slide the blade release button in the direction of the arrow. (Fig.4-3)  
Use your fingernail for easy sliding.

## Trimming downy hair

(Use the downy hair blade)

### ■ Holding the blade to the skin (Fig.5)

- Lay the blade against the skin.
- Slowly move the blade against the flow of the hair.
  - Ⓐ Skin

### ■ How to trim (Fig.6)

Slowly move the facial trimmer in the direction of the arrow for the areas to be trimmed.

- Above the eyebrows (Fig.6-1)  
Move from the hairline to the center of the forehead.  
Then back to the hairline.
- Cheek (Fig.6-2)  
Move outward from the center of the face.
- Upper lip (Fig.6-3)  
Stretch your upper lip.
- Sideburns (Fig.6-4)  
Decide on the length of the sideburns and trim downward.
- Below the eyes (Fig.6-5)  
Hold the skin with your fingers and move outward from the center.
- Nape (Fig.6-6)  
Hold the skin with our fingers and move upward.

## Trimming your eyebrows

### ■ Basic eyebrow shape (Fig.7)

- ① The eyebrow base is within the lines extending from the inner side and outer side of the nose.
- ② The eyebrow crest is above the eyebrow arch within the lines

extending from the outer edge of the eye and the iris.

- ③ The eyebrow tip is within the line extending from and connecting the outer side of the nose and the outer edge of the eye.

Note: The eyebrow arch is located where the eyebrow protrudes.

- Ⓐ Eyebrow base
- Ⓑ Eyebrow arch
- Ⓒ Eyebrow crest
- Ⓓ Eyebrow tip

### ■ Using the facial trimmer on the eyebrows (Fig.8)

Slowly move the facial trimmer in the direction of the arrow along the hair sticking out of the outline.

- Above the eyebrow (Fig.8-1)  
Stop at about 2-3 mm on the side of the eyebrow.
- Below the eyebrow (Fig.8-2)  
Trim while holding the eyelid and stretching the skin.
- The brow (Fig.8-3)  
Trim while changing your grip.

### Eyebrow comb (Fig.9)

#### Eyebrow comb A (Fig.9-1)

Trimming length: 6 ~ 8 mm

Finished image:

Overall long eyebrow (even length)

For a natural eyebrow (Fig.9-2)

#### Eyebrow comb B (Fig.9-3)

Trimming length: 2 ~ 4 mm

Finished image:

Overall short eyebrow (even length)

Eyebrow becomes easier to draw.

(Fig.9-4)

### ■ Attaching the comb (Fig.10)

- Support the head of the trimmer with your finger so that it does not swing excessively.
- Select the trimming length and insert the eyebrow blade to the eyebrow comb until a click is heard.
- Align the L (long) or S (short) mark with the groove in the eyebrow comb.

### ■ How to use (Fig.11)

- Use the eyebrow comb by holding it close to your skin

#### Ⓐ Skin

The blade is at the position of the line.

#### Ⓑ Trimming line

1. Align the comb with your eyebrow and comb from the end to the beginning of the eyebrow. (Fig.12)
2. Repeat until the eyebrow is trimmed to a desired length.
  - Depending on individuals, the hair at the eyebrow base may be pointing upward. In this case, it is recommended the comb be moved against the flow of the hair, in the direction from the forehead to the nose. (Fig.13)

### Cleaning

(Be sure to turn off the switch)

1. Remove the blade.
2. Clean with brush.
  - The blade cannot be disassembled.
3. Wipe off any trimmed hair with a dry cloth.
4. After cleaning, attach the blade to

its original position.

### Caution

- Never wash the appliance in water.
  - Doing so may cause a malfunction.
- Do not use alcohol, thinner, benzene, or enamel remover to clean the appliance.
  - Doing so may cause a malfunction or cracking or discoloration of the appliance.

Wipe the appliance with a dry cloth or a cloth moistened with a small amount of soapy water.

- Keep the appliance out of the reach of children.

### After service

We pledge our product of the best quality, at the same time, you will enjoy our free of charge after service. In two years from the date of purchase, if the facial trimmer has any damage caused because of the manufacturing technological or raw and processed materials, we will offer the free charge service for you. Please fill in the certificate and ask for invoice or valid purchase voucher, if by any chance when your facial trimmer broken down, no matter during guarantee time or not, you always get a high quality service in our service center or special repair shop.

### Specifications

|              |  |
|--------------|--|
| Power source | Dry cell battery   |
| Battery size | AAA alkaline battery × 1 (sold separately)                               |
| Weight       | 20g (attaching the downy hair blade and the cup)<br>battery not included |

- The trimmer apply to Q/SXDGWB 6.



# 保修证

## 保修条款

有关保修期内Panasonic商品的保修(无偿修理)，从购买之日起开始实施。

1. 保修期内的商品只可在Panasonic认定维修店进行保修；保修时，请出示本保修证及购机发票。

以下两点需特别注意：

- a. 本保修证遗失后不再补发，请妥善保管。
- b. 本保修证仅限于中华人民共和国国内有效(香港、澳门、台湾三地区暂不可使用)。

2. 自购入之日起在以下期间内，在正常使用中发生故障的情况下进行保修。

- 整机 (除商用产品) ····· 2年内无偿
- 整机 (商用产品) ····· 6个月
- 内刀头、外刀网、刀头、辅助装置、附件 ····· 有偿提供

3. 属下列情况之一者，即使在保修期内，也不能以保修对待，但是可以实行收费修理：

- a. 未按商品使用说明书要求使用、维护、保管而造成损坏的；
- b. 因不正确操作、电源不正常、破损(如：摔落等)而造成损坏的；
- c. 不经Panasonic认定维修店维修人员拆动造成损坏的；
- d. 不能出示本保修证及有效购机发票的；
- e. 保修证上记录的信息与商品实物标识不符或者涂改的；
- f. 因不可抗力因素(如雷电、地震、火灾、水灾等)造成损坏的。

4. 本保修条款只适用于消费者个人为生活消费需要而购买使用的场合，不适用于经营性等使用。

### 【商品信息】

商品名称: 美容修剪器 产地: 中国·广州

商品型号: ES2113 制造编号:

**【保修回执】** 以下回执是保修的重要依据，请勿自行撕下

商品型号: ES2113 制造编号: 保修结算4

商品型号: ES2113 制造编号: 保修结算3

商品型号: ES2113 制造编号: 保修结算2

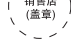
商品型号: ES2113 制造编号: 保修结算1

商品型号: ES2113 制造编号: 促销员留存

保修证管理编码印刷处:

本保修证内容如有变更恕不另行通知

**[销售记录]** 未完整记录以下信息将可能无法进行保修

销售日期: ..... 发票号码: ..... 安装调试日期: ..... 

顾客姓名: ..... 联系电话: .....

顾客地址: ..... 邮 编: .....

销售店名称: ..... 销售店电话: .....

销售店地址: ..... 邮 编: .....

**[维修记录]**

维修店名称: ..... 联系电话: ..... 送修日: .....

维修店地址: ..... 邮 编: .....

故障内容: ..... 故障原因: .....

维修内容: .....

维修员签字: ..... 交验日期: .....

维修店名称: ..... 联系电话: ..... 送修日: .....

维修店地址: ..... 邮 编: .....

故障内容: ..... 故障原因: .....

维修内容: .....

维修员签字: ..... 交验日期: .....

维修店名称: ..... 联系电话: ..... 送修日: .....

维修店地址: ..... 邮 编: .....

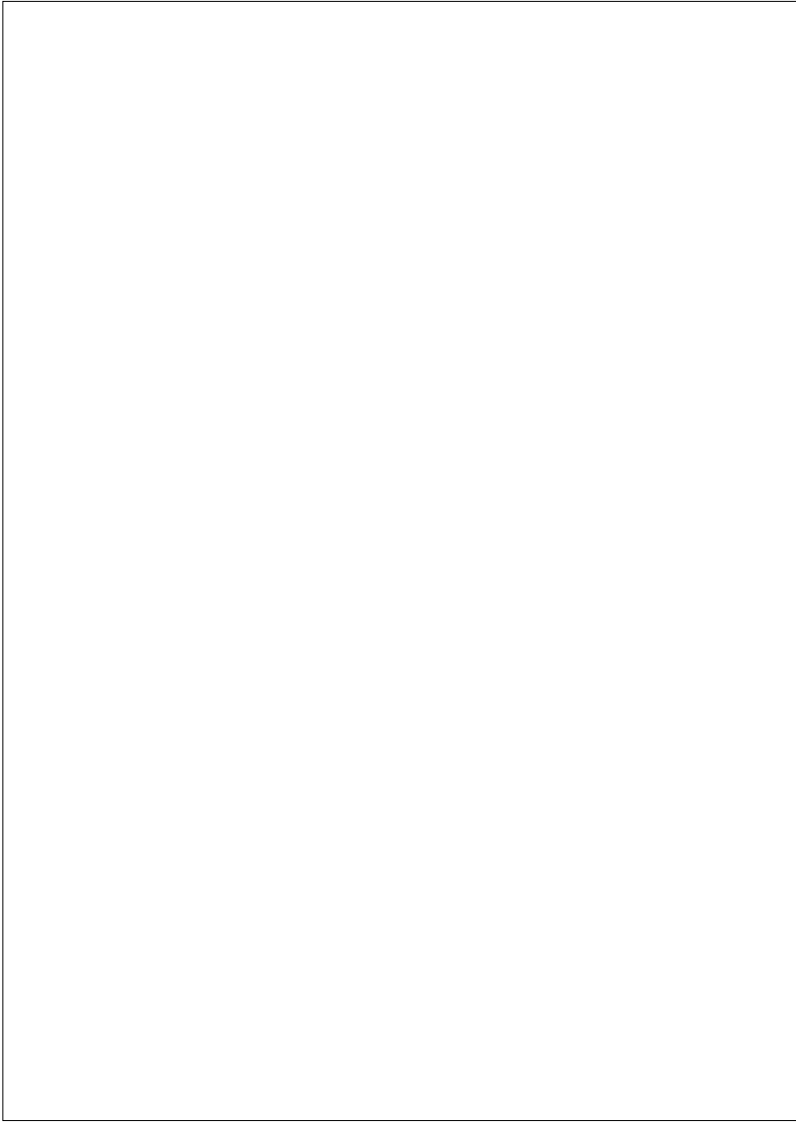
故障内容: ..... 故障原因: .....

维修内容: .....

维修员签字: ..... 交验日期: .....

Panasonic客户咨询服务中心:  
400-810-0781; 800-810-0781 (固定电话)  
Panasonic官方网站: <http://panasonic.cn>

松下电器(中国)有限公司



**松下电工·万宝电器(广州)有限公司 (PEWWBG)**  
**Panasonic Electric Works Wanbao (Guangzhou) Co., Ltd.**

工厂地址：广州市番禺区市广路万宝基地

(Address): Wanbao Base, Shiguang Road, Panyu District, Guangzhou

电话(Tel): (020)84770333

传真(Fax): (020)84773033

邮政编码(Post Code): 511495

原产地：中国

Y. No.6 EN, CH (2009-4-8)

中国印刷  
Printed in China