

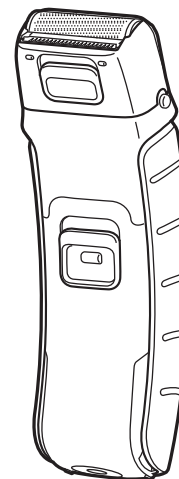


Panasonic®

Operating Instructions
使用说明书
Rechargeable body shaver
全身剃毛器

Model No.
型号 ES2263/ES2265

English	2
中文	9
保修证	17



Before operating this unit, please read these instructions completely and save them.
在使用本产品前，请仔细阅读本说明书并妥善保管。



Important

► Before use

This WET/DRY body shaver can be used for wet shaving with soap lather or for dry shaving. Use the watertight shaver in the shower and clean it in water. The following is the symbol of Wet body shaver. The symbol means that the hand-held part may be used in a bath or shower.



Our research has shown that you can enjoy closer and smoother shaves with the sharp blades. And our pop-up trimmer will be able to cut longer hairs with ease.

► Using the shaver

Caution - The outer foil is very thin and can be damaged if not used correctly.

- Check that the outer foil is not damaged before using the shaver. Do not use the shaver if the outer foil is damaged because you will cut your skin.
- Be sure to lubricate the outer foil or the blades before using the shaver. Failure to do so may cause the shaver to pull your hairs or damage to skin.
- Do not apply strong pressure to the skin, repeatedly rub over the same area, hold in one spot on the skin, or apply in a jabbing motion when using the shaver. Doing so may cause damage to skin, inflammation or increased pain.
- Do not use for facial shaving.

► Charging the shaver

- Dry the shaver completely before charging it.
- Do not attempt to use a charger other than the included one which is specifically designed for this model. Use only the included charger.
- Keep the charger away from water and handle it only with dry hands.

- The shaver may become warm during use and charging. However, this is not a malfunction.
- Hold the adaptor when disconnecting it from the household outlet. If you tug on the supply cord, you may damage it. The power cord of the charger cannot be replaced. If the power cord is damaged, never use the charger. Please contact a qualified service agent to obtain new charger.
- Do not charge the shaver where the temperature is below 0 °C or above 40 °C, where it will be exposed to direct sunlight or a heat source, or where there is a lot of moisture.
- Charge the shaver for at least 16 hours when charging it for the first time or when it has not been used for more than 6 months.

► Cleaning the shaver

- When you clean the shaver with water, do not use salt water or hot water. Wipe it with a cloth dampened with soapy water. Do not use thinner, benzine or alcohol.

► Storing the shaver

- This appliance is not intended for use by persons (including children) with reduced physical, sensory or mental capabilities, or lack of experience and knowledge, unless they have been given supervision or instruction concerning use of the appliance by a person responsible for their safety. Children should be supervised to ensure that they do not play with the appliance.
- Store the charger in a dry area where it is protected from damage.
- Do not disassemble the appliance. Take it to a qualified service person when service or repair is required.

SPECIFICATIONS

Model: ES2265/ES2263

Rated input: a.c 100-240 V, 20 mA

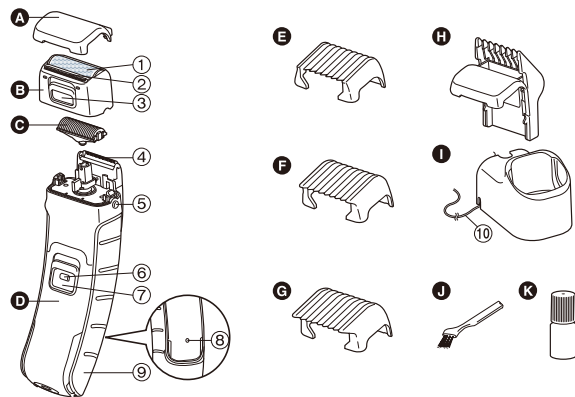
Rated output: d.c 1.2 V, 110 mA

Charging time: 8 hours

This product is intended for household use only.

- The unit is applied to the Chinese standard GB4706.1 appendix B, GB4706.9 and Q/SXDGWB 6.

Parts identification



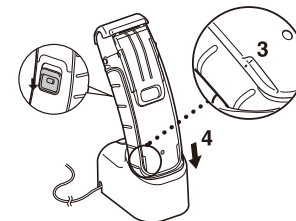
- A** Protective cap
- B** Foil frame
 - ① Outer foil
 - ② Pop-up trimmer
 - ③ Pop-up trimmer switch
- C** Inner blade
- D** Main body
 - ④ Trimmer for beards (for ES2265 only)
 - ⑤ Foil frame release buttons
 - ⑥ Switch lock button
- 7** OFF/ON switch
- 8** Charge indicator lamp
- 9** Handle
- E** 3 mm comb attachment
- F** 6 mm comb attachment
- G** 9 mm comb attachment
- H** Comb attachment for beards (for ES2265 only)
- I** Charger (RE7-48)
- ⑩ Power cord
- J** Cleaning brush
- K** Oil

Charge

Charging the shaver

Place the shaver on the charger to charge it.
You can charge the shaver in 8 hours.

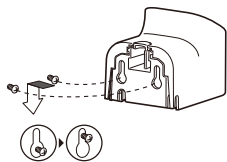
- 1** Turn off the shaver.
- 2** Plug the power cord into a household outlet and place the charger on a flat surface.
- 3** Ensure that the marks of the handle and the main body are aligned with each other.
- 4** Insert it in the charger as illustrated.



- The charge indicator lamp lights and stays on until the shaver is removed from the charger.
- A full charge will supply enough power for approx. 4 shaves of 7 minutes each.

► Fixing the charger to the wall

1. Attach two screws to the wall as illustrated.
 - Screws are sold separately.
2. Hook the charger onto these screws.
3. Plug the power cord into a household outlet.



Shave

Using the shaver

Trim your hair using the pop-up trimmer if it is longer than 5 mm.

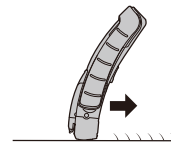
Wet/foam shaving

Shaving with soap lather makes the skin slippery for a closer shave. Do not use shaving cream, skin cream or skin lotion as it will clog the blades.

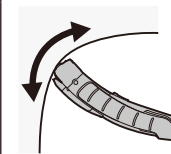
- 1 **Wet your skin and remove the protective cap.**
- 2 **Wet the outer foil and place a small quantity of liquid body soap on the outer foil.**
- 3 **While pressing the switch lock button, slide the OFF/ON switch upwards.**
- 4 **Press gently so that the whole of the outer foil is in close contact with the skin.**



- 5 **Apply the shaver to your skin and press gently while moving it slowly against the direction the hair grows.**



Underarm



Hold your arm up enough to stretch the skin and shave back and forth.

Legs



Move the shaver from ankle to knee.

Arms



Move the shaver from outside to inside.

For the best results

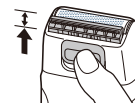
Pull the skin taut where the area is prone to sagging (on the inside of the knees and elbows).

Dry shaving

You can also shave without wetting your skin or the outer foil.

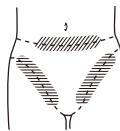
Using the pop-up trimmer

1. Slide the pop-up trimmer switch upwards.
2. Slide the OFF/ON switch upwards.
3. Apply the shaver to your skin and press gently while moving it slowly.



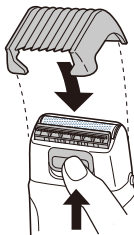
For bikini-line

Use the pop-up trimmer for bikini-line.



Using the comb attachments

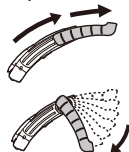
1. Select the attachment and attach it onto the shaver.
2. Slide the pop-up trimmer switch upwards.
3. Slide the OFF/ON switch upwards.
4. Apply the shaver to your skin and press gently while moving it slowly against the direction the hair grows.
 - Trim slowly and with care to avoid hairs being caught in the comb attachment.
 - Clean the shaver when it is no longer shaving well or when it is clogged.



Using the handle

► Shaving hard-to-reach areas (calves, backs, etc.)

1. Turn off the shaver.
 - Handle movement will be stiff if switch is left ON.
2. Extend the handle by sliding it until it clicks.
 - Adjustable to either 37.5 mm or 75 mm.
3. Bend the handle when it is fully extended.
 - Adjustable by 15° in total of 6 steps.



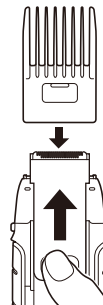
4. Slide the OFF/ON switch upwards.
5. Apply the shaver to hard-to-reach areas and slide it gently.



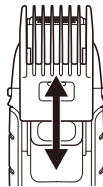
Using the trimmer for beards ES2265

Comb your beard or sideburns before trimming them.

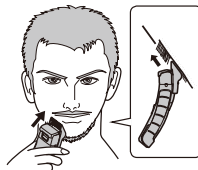
- Do not wet beard with shaving foam or similar products. A wet beard will form bunches and will make it difficult to maintain an even length.
- **Trimming your moustache**
1. Attach the comb attachment for beards and slide the trimmer for beards upwards.



- Grasp the sides of the comb attachment for beards and move it to the desired trimming length.
 - Adjustable by 1.5 mm from 2.0 mm to 14.0 mm in 9 steps.



- Slide the OFF/ON switch upwards.
- Move the shaver upwards with the OFF/ON switch facing upwards as illustrated.



► Shaping your moustache

- Slide the trimmer for beards upwards and turn on the shaver.
- Trim around your moustache.
 - If you wish to have a rounded line, hold the shaver on its side.



► Shaping your sideburns

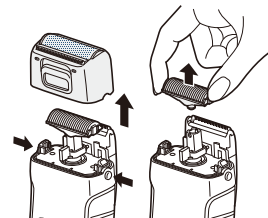
- Slide the trimmer for beards upwards and turn on the shaver.
- Cut your sideburns.



Clean

Cleaning the shaver

- Press the foil frame release buttons to remove the foil frame.
- Remove the inner blade by grasping it firmly at both ends and pulling straight away from the shaver.
- Clean with running water.
- Wipe off any drops of water with a dry cloth.



► Cleaning with brush

You can also clean the shaver with the cleaning brush.

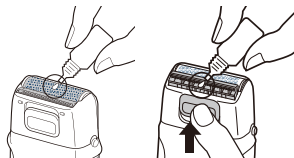


Lubrication

Apply the oil to the outer foil, the pop-up trimmer, and the trimmer for beards before and after each use.

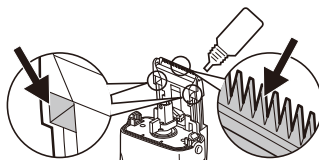
► Outer foil and pop-up trimmer

1. Apply a drop of oil to the outer foil.
2. Raise the pop-up trimmer and apply a drop of oil.
3. Turn on the shaver, and run it for a few seconds.



► Trimmer for beards **ES2265**

1. Remove the inner blade and slide the pop-up trimmer switch upwards.
2. Apply one or two drops of oil to the points indicated by arrows.



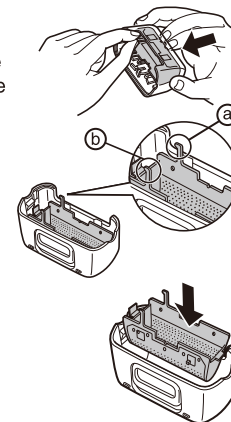
Replacing the outer foil and the inner blade

outer foil	once every year
inner blade	once every two years

► Replacing the outer foil

Never remove the outer foil at any time other than when replacing it.

1. Press the foil frame release buttons to remove the foil frame.
2. Squeeze the front and the back side of the foil frame and lift up one of the two knobs on the outer foil.
3. Slip the outer foil into the frame and guide the plastic edges onto the hooks in the foil frame until it clicks into the shaver.



► Replacing the inner blade

1. Press the foil frame release buttons to remove the foil frame.
2. Remove the inner blade by grasping it firmly at both ends and pulling straight away from the shaver.
3. To insert the new inner blade, hold the blade at both ends and press downward until it snaps into the shaver.

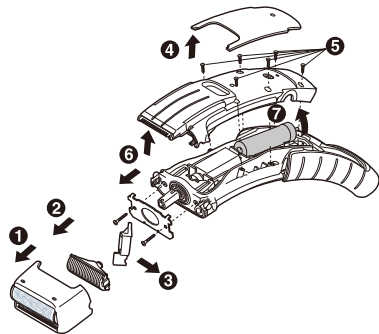
Removing the built-in rechargeable battery

English

Remove the built-in rechargeable battery before disposing of the shaver. Do not dismantle or replace the battery. Otherwise you can't use the shaver again. This could cause fire or an electric shock. Replace them at an authorized service center.

Remove the battery as illustrated.

- Fully discharge the battery.
- Please take care not to short-circuit the battery.



Important notice regarding environmental protection

The built-in rechargeable Nickel-Metal Hydride battery contains substances that may be environmentally harmful. Please remove the battery before discarding your shaver.

For environmental protection and recycling materials

This shaver contains Nickel-Metal Hydride battery. Please make sure that the battery is disposed of at an officially designated location if there is one in your area.



注意事项

►使用前

ES2263/2265干/湿两用全身剃毛器可以使用泡沫湿剃，也可以干剃。此全身剃毛器具有防水功能，可以放入水中清洗，亦可在淋浴时使用。下图标志说明此全身剃毛器可以在洗澡或淋浴时使用。



根据我们的研究结果：锋利的刀网会让剃毛过程更加服贴皮肤，舒适无比。弹出式修剪刀可轻松剪除较长的毛发。

►使用本品

注意一外刀网很薄，若使用不正确就可能损坏。

- 在使用本品前应检查外刀网是否破损。外刀网破损时请勿使用本品，否则可能会割伤皮肤。
- 在使用本品前，请确保已对外刀网或内刀头进行了润滑处理。否则可能导致全身剃毛器拉扯毛发或伤及皮肤(见第13页)。
- 在使用本品时，请不要用力按压皮肤，或在同一部位重复摩擦，或停留在皮肤的某个部位不动，也不要猛戳。否则会导致皮肤损伤、炎症或疼痛增加。
- 请勿用于刮脸。
- 请勿用于修剪宠物的毛发。

►本品充电

- 给全身剃毛器充电前必须使其完全干燥。
- RE7-48充电器只能与本产品配合使用，不能用于其它的产品或用途。
- 充电器应远离水，操作时双手要保持干燥。
- 全身剃毛器在使用和充电期间可能会发热，属正常现象。
- 从家用插座上取下充电器时，请捏住插头再拔出。拉扯电源线可能会损坏电源线。电源软线不能更换，如果软线损坏，此器具应废弃。
- 请勿在以下情况对本品进行充电：温度低于0℃或高于40℃时；有阳光直射或其它热源的地方；环境非常潮湿时。
- 购买后初次使用或半年以上未使用过，请充电16小时(要激发充电池活性)，如果充电池完全放电后充电，充电指示灯可能不会立即亮，继续充电几分钟后即正常。

►本品清洁

- 用水清洗全身剃毛器时，请勿使用盐水或热水。用蘸肥皂水的布擦拭即可。勿使用稀释剂、汽油或酒精。

►本品存放

- 本品不宜供肢体、感官或精神上有残疾者、缺乏经验和知识者(包括儿童)使用，除非有人对此类人加以监督或者对本品的使用加以指导，且对使用者的安全能承担责任。



- 请妥善处理本产品的包装袋，避免婴幼儿窒息等意外发生。请置于婴幼儿触摸不到的地方。请勿让婴幼儿及儿童触摸润滑油。请对儿童进行监督，避免其将本产品视为玩具，引发危险。
- 充电器应保存在干燥且不易受损坏的地方。
- 请勿拆卸本品。如需进行维护或维修，应联络 Panasonic 电器指定的维修中心进行维修。

规格

型号：ES2263/ES2265

充电器额定输入：交流100-240V, 20mA

充电器额定输出：直流1.2V, 110mA

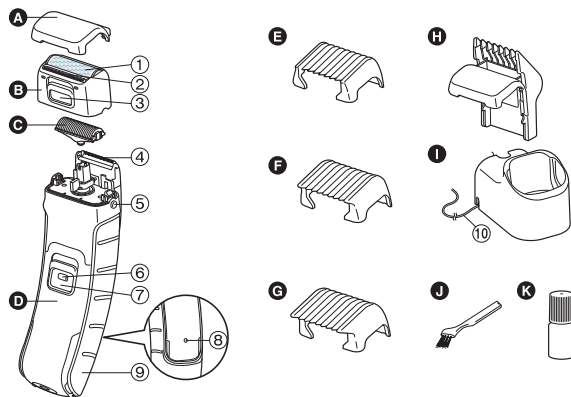
全身剃毛器额定电压：直流1.2V

充电时间：8小时

本品仅供家庭使用。

- 本产品符合中国标准GB4706.1附录B和GB4706.9及企业标准Q/SXDGWB 6。

各部分名称



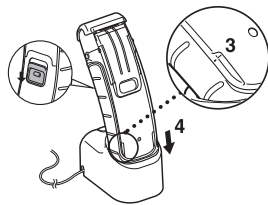
- A** 保护盖
- B** 外刀架
 - ① 外刀网
 - ② 弹出式修剪刀
 - ③ 弹出式修剪刀开关
- C** 内刀头
- D** 机身
 - ④ 胡须修剪刀(仅适用于 ES2265)
 - ⑤ 外刀架释放按钮
 - ⑥ 开关锁定按钮
- E** 3毫米限位梳
- F** 6毫米限位梳
- G** 9毫米限位梳
- H** 胡须限位梳(仅适用于 ES2265)
- I** 充电器(RE7-48)
- ⑩ 电源线
- J** 清洁刷
- K** 润滑油
- ⑦** 0/1 开关
- ⑧** 充电指示灯
- ⑨** 把手

充电

本品充电

将本品放到充电器上进行充电。
此全身剃毛器完全充电时间为8小时。

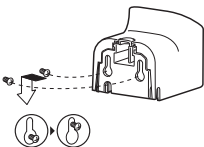
- 1 关闭全身剃毛器电源。
- 2 将电源线插头插入家用插座，并把充电器置于平坦位置上。
- 3 确保把手和机身上的标记相互对齐。
- 4 按图示方法将全身剃毛器插入充电器内。



- 充电期间充电指示灯始终保持灯亮，直到将本品从充电器中取出为止。
- 一次完全充电可提供大约4次剃毛所需的电量（一次剃毛约为7分钟）。

▶ 将充电器固定到墙上

1. 按图示在墙上拧入两枚螺丝钉。
• 螺丝钉请另行购买。
2. 将充电器挂到螺丝钉上。
3. 将电源线插头插入家用插座。



剃毛

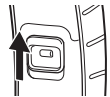
使用本品

如果毛发长于5毫米，请使用弹出式修剪刀进行修剪。

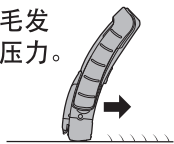
湿法/泡沫剃毛

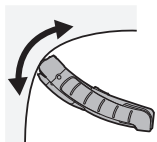
剃毛时使用肥皂泡沫，会使皮肤更光滑，操作时与全身剃毛器更加贴合。请勿使用剃毛膏、护肤霜或润肤液，因为这些产品会阻碍刀刃的顺畅使用。

- 1 弄湿皮肤并取下保护盖。
- 2 弄湿外刀网并在其上涂抹少量液体香皂。
- 3 按住开关锁定按钮并向上推动O/1开关。



- 4 轻按全身剃毛器，使整个外刀网与皮肤紧密贴合。
- 5 把全身剃毛器轻贴皮肤上，逆着毛发生长方向缓慢移动的同时并轻施压力。



**腋下**

抬起手臂，伸展皮肤，来回刮剃。

腿部

全身剃毛器应从踝部向膝盖方向移动。

手臂

全身剃毛器应从手臂外侧向内侧移动。

如要获得最佳效果

绷紧某些易松弛部位(如膝盖内部和肘内部)的皮肤。

干式剃毛

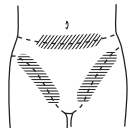
您也可以不弄湿皮肤或外刀网来剃毛。

使用弹出式修剪刀

1. 向上推动弹出式修剪刀开关。
2. 向上推动0/1开关。
3. 把全身剃毛器放在皮肤上，缓慢移动的同时轻施压力。

**关于腹股沟线**

使用弹出式修剪刀来修剪腹股沟线。

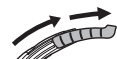
**使用限位梳**

1. 选择合适的限位梳并将其装到全身剃毛器上。
2. 向上推动弹出式修剪刀开关。
3. 向上推动0/1开关。
4. 把全身剃毛器放在皮肤上，逆着毛发生长方向缓慢移动的同时并轻施压力。
 - 请慢慢修剪，小心勿让毛发卡入限位梳内。
 - 剃毛效果变差或全身剃毛器变得不顺畅时，应清洁全身剃毛器。
 - 取出限位梳时，手指放在限位梳扣位置，向上拉可卸下限位梳。

**使用把手**

▶对不易接近的部位(小腿肚，背部等)进行剃毛

1. 关闭全身剃毛器。
 - 开关处于1时，把手会强烈振动。
2. 推出把手，直到发出“咔哒”声为止。
 - 其长度可调为37.5毫米或75毫米。
3. 把手完全伸展时将其弯曲。
 - 共有6个调节档，每档有15°。
4. 向上推动0/1开关。
5. 把全身剃毛器伸到手不易接近的部位，轻轻移动。



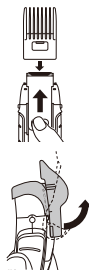
使用胡须修剪刀(仅适用于 ES2265)

修剪前应对胡须和鬓角进行梳理。

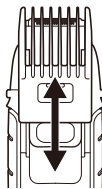
- 不要使用剃毛泡沫或类似产品来湿润胡须。因胡须会凝结成束，在修剪时很难保持胡须长度一致。

▶修剪八字胡

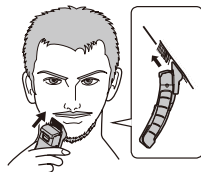
1. 安装好胡须限位梳，并向上推出胡须修剪刀。
 - 取出胡须限位梳时，手指放在胡须限位梳扣位置，向上拉可卸下胡须限位梳。



2. 握住胡须限位梳两侧，将其调整为所希望的修剪长度。
 - 共有9个调节档，每档为1.5毫米，最短2.0毫米，最长14.0毫米。



3. 向上推动0/1开关。
4. 如图所示，推上0/1开关后，向上移动全身剃毛器。



▶修整八字胡

1. 向上推出胡须修剪刀并打开全身剃毛器开关。
2. 在八字胡周围进行修剪。
 - 如果希望达到圆形线效果，请在修整时握住全身剃毛器的两侧。



▶修整鬓角

1. 向上推出胡须修剪刀并打开全身剃毛器开关。
2. 修剪鬓角。

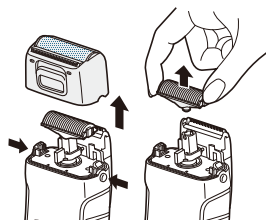


清洁

清洁本品

将全身剃毛器从充电器中取出，并将开关置于“0”位置。

1. 按下外刃架释放按钮，取下外刃架。
2. 紧握住内刀头两端往外拉，取下内刀头。



- 用流动水清洗。
- 用干布拭去水珠。



警告：全身剃毛器须与电源软线分离后才能用水清洗。

▶ 用刷子进行清洁

您也可使用清洁刷来清洁全身剃毛器。

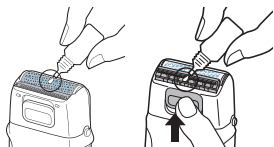


润滑

每次使用前和使用后都应对外刀网、弹出式修剪刀和胡须修剪刀进行润滑加油。

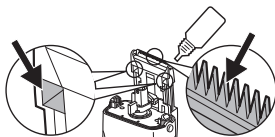
▶ 外刀网和弹出式修剪刀

- 在外刀网上加一滴油。
- 升高弹出式修剪刀，加一滴油。
- 打开全身剃毛器开关，运行几秒。



▶ 胡须修剪刀(仅适用于 ES2265)

- 取下内刀头，向上推出胡须修剪刀。
- 在箭头所示处加一至两滴油。
- 加油后，打开全身剃毛器开关，运行几秒。



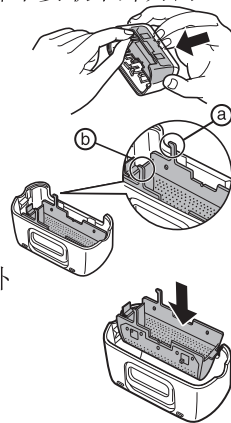
更换外刀网和内刀头

外刀网	每年一次
内刀头	每两年一次

▶ 更换外刀网

除更换外刀网外，任何时候都不要取下外刀网。

- 按下外刀架释放按钮，取出外刀架。
- 分别将两个手指放在外刀网凸起的ⒶⒷ塑料板上，轻轻向上拉可取出外刀网。
- 将外刀网滑入外刀架内向下压，直至听到“咔嚓”一声，使外刀网完全放入外刀架中。



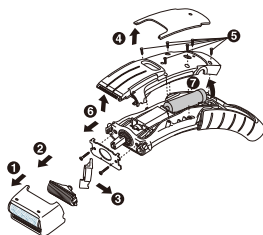
▶ 更换内刀头

- 按下外刀架释放按钮，取下外刀架。
- 紧握住内刀头两端往外拉，取下内刀头。
- 插入新的内刀头时应握住刀刃的两端往下按，直至其咔嗒入位。

取下内置可充电电池

本机内藏有可充电的电池, 在消费者决定废弃本机前, 请务必将电池从机器中取出。

- 分解器具, 取出电池前, 一定要断开电源。
- 建议消费者在决定废弃器具前, 事先征求经销商或本公司指定维修点的意见, 尽量延长器具的使用寿命。
- 当消费者决定废弃器具又不想自行分解机器取出电池时, 建议消费者将器具送往本公司指定的维修站, 由维修店对电池进行分解和回收。
- 电池务必废弃于政府规定的地方或回收处理单位。
- 按右图所指示的①~⑦的顺序拆开本体, 卸下电池。



有关环境保护的重要通告

内置镍氢充电电池内包含的物质可能有害环境。
在丢弃全身剃毛器前请取下电池。

关于环境保护及材料回收

本品内包含镍氢电池。
请确保将电池丢弃于所在区域官方指定场所。

Panasonic

保修证

保修条款

有关保修期内Panasonic商品的保修(无偿修理),从购买之日起开始实施。

1.保修期内的商品只可在Panasonic认定维修店进行保修;保修时,请出示本保修证及购机发票。
以下两点需特别注意:

- 本保修证遗失后不再补发,请妥善保管。
- 本保修证仅限于中华人民共和国内有效(香港、澳门、台湾三地区暂不可使用)。

2.自购入之日起在以下期间内,在正常使用中发生故障的情况下进行保修。

- 整机(除商用产品).....2年内无偿
- 整机(商用产品).....6个月
- 内刀头、外刀网、刀头、辅助装置、附件.....有偿提供

3.属下列情况之一者,即使在保修期内,也不能以保修对待,但是可以实行收费修理:

- 未按商品使用说明要求使用、维护、保管而造成损坏的;
- 因不正确操作、电源不正常、破损(如:摔落等)而造成损坏的;
- 不经Panasonic认定维修店维修人员拆卸造成损坏的;
- 不能出示本保修证及有效购机发票的;
- 保修证上记录的信息与商品实物标识不符或者涂改的;
- 因不可抗力因素(如雷电、地震、火灾、水灾等)造成损坏的。

4.本保修条款只适用于消费者个人为生活消费需要而购买使用的场合,不适用于经营性等使用。

【商品信息】

商品名称: 全身剃毛器 产地: 中国·广州

商品型号: ES2263/ES2265 制造编号:

【保修回执】以下回执是保修的重要依据,请勿自行撕下

商品型号: ES2263/ES2265 制造编号: 保修结算4

商品型号: ES2263/ES2265 制造编号: 保修结算3

商品型号: ES2263/ES2265 制造编号: 保修结算2

商品型号: ES2263/ES2265 制造编号: 保修结算1

商品型号: ES2263/ES2265 制造编号: 低销售员留存

保修证管理编码印刷处:

本保修证内容如有变更恕不另行通知

【销售记录】 未完整记录以下信息将无法进行保修

销售日期: 发票号码: 安装调试日期:

顾客姓名: 联系电话: 邮 编:

顾客地址: 邮 编:

销售店名称: 销售店电话: 邮 编:

销售店地址: 邮 编:



【维修记录】

维修店名称: 联系电话: 送修日:

维修店地址: 邮 编:

故障内容: 故障原因:

维修内容: 交验日期:

维修员签字:

维修店名称: 联系电话: 送修日:

维修店地址: 邮 编:

故障内容: 故障原因:

维修内容: 交验日期:

维修员签字:

维修店名称: 联系电话: 送修日:

维修店地址: 邮 编:

故障内容: 故障原因:

维修内容: 交验日期:

维修员签字:

Panasonic客户咨询服务中心:

400-810-0781; 800-810-0781 (固定电话)

Panasonic官方网站: <http://panasonic.cn>

松下电器(中国)有限公司

松下电工·万宝电器(广州)有限公司 (PEWWBG)
Panasonic Electric Works Wanbao (Guangzhou) Co., Ltd.

工厂地址：广州市番禺区市广路万宝基地
(Address): Wanbao Base, Shiguang Road, Panyu District, Guangzhou
电话(Tel): (020)84770333
传真(Fax): (020)84773033
邮政编码(Post Code): 511495
原产地：中国

Y. No.2 EN, CH (2009-5-25)

中国印刷
Printed in China