

Panasonic®

使用说明书（另附保修证） Operating Instructions

（家用）电动剃须刀
(Household) Rechargeable Shaver

型号 ES-ST23
Model No.

中文	2
----	---

English	11
---------	----



在使用本产品前，请仔细阅读本说明书并妥善保管，以备将来参考。

Before operating this unit, please read these instructions completely and save them for future use.

感谢您选购 Panasonic 剃须刀 ES-ST23。
Panasonic 剃须刀采用干 / 湿两用技术，既可在干燥的环境下使用，也可在淋浴或盆浴时使用，让您充分享受舒适、轻松的剃须乐趣。请在使用前阅读所有说明。

重要事项

本剃须刀内置充电电池，请不要将其丢入火中进行加热或在高温环境中充电、使用和保管。

► 使用前

ES-ST23 干 / 湿两用剃须刀，可以使用剃须膏湿剃，也可以干剃。此剃须刀具有防水功能。可放入水中清洗，也可在淋浴时使用。下图标志表示适合用在洗澡或淋浴中。



使用剃须膏湿剃三周后，您能体会到一些变化。由于您的皮肤和胡须约需一个月时间才能适应新的剃须方式，因此您可能需要一点时间来适应 Panasonic 干 / 湿两用剃须刀。

► 使用剃须刀

注意

因外刀网很薄，若使用不当就可能造成损坏。使用剃须刀前，请确认外刀网是否损坏。如果外刀网已损坏，请不要使用该剃须刀，因为这样会割伤皮肤。

- 请在出现异常或故障时终止使用。
- 请勿将外刀网过度压向嘴唇或面部其他部位。请勿将外刀网直接接触伤疤或损伤的皮肤。
- 不要与您的家人或其他人员共用剃须刀。否则可能造成感染或炎症。
- 本产品不宜供肢体、感官或精神上有残疾者、或缺乏经验和知识者（包括儿童）使用，必须有监护者从旁监督并对本产品的使用加以指导，且对使用者的安全能承担责任。请避免儿童将本产品视为玩具，从而引发危险。

► 充电

- 切勿在浴室或淋浴房使用电源适配器及充电底座。

- 仅限使用专用的电源适配器 (RE7-59) 和充电底座 (RC9-83)。请勿用这些设备给其他电器充电。
- 将适配器插入干燥的家用电源插座上，操作时请保持双手干燥。
- 从家用电源插座上拔出适配器时，应握住适配器。不要用力拉扯电源线，否则可能会损坏电源线。
- 电源线不能更换，如果电源线损坏，此电源适配器应废弃。

► 清洁剃须刀

警告

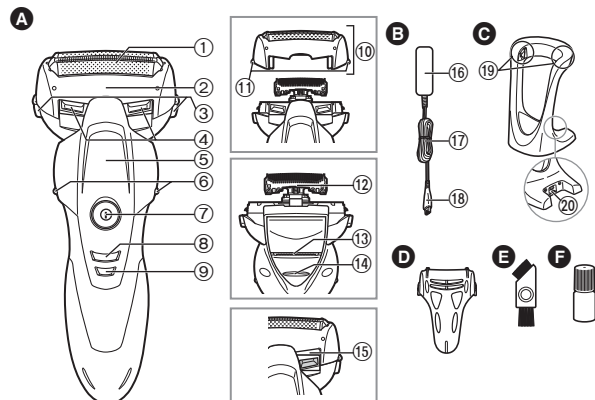
在水中清洗剃须刀时，请先将其从充电底座上取下，以免触电。

- 请在装有两个内刀头的状态下进行清洗，若在仅装有一个内刀头的状态下进行清洗，可能会损坏剃须刀。
- 可用清水清洗剃须刀，不要使用盐水或热水。不要将剃须刀长时间浸泡在水中。
- 仅限使用稍稍蘸有自来水或肥皂水的软布清洁外壳。不要使用稀释剂、汽油、酒精或其他化学物品。
- 切勿用水清洗电源适配器和充电底座。

► 存放剃须刀

- 存放剃须刀时，请务必将其放入便携架中，以免刮擦外刀网。
- 请在使用后将剃须刀存放在干燥的地方。
- 不要将剃须刀存放在阳光直射或有其他热源的地方。
- 存放剃须刀时请拔出适配器。
- 不要弯曲电源线或将其缠绕在适配器和充电底座上。
- 请勿让婴幼儿接触润滑油。
- 请妥善处理本产品的包装袋，避免婴幼儿窒息等意外发生。请置于儿童触摸不到的地方。
- 本体与充电器及充电底座配套销售。

各部分名称



A 机身

- ① 外刀网
- ② 外刀架
- ③ 外刀架释放按钮
- ④ 清洁叶窗
- ⑤ 指握位置
- ⑥ 侧面端子
- ⑦ 电源开关
- ⑧ 电池电量指示灯
- ⑨ 充电状态指示灯
- ⑩ 外刀部

B 外刀网释放按钮

- ⑪ 内刀头
- ⑫ 修剪刀
- ⑬ 修剪刀操纵杆
- ⑭ 入水口
- ⑮ 电源适配器 (RE7-59)
- ⑯ 适配器
- ⑰ 电源线
- ⑱ 电源线插头

C 充电底座 (RC9-83)

- ⑲ 充电端子
- ⑳ 底座插孔

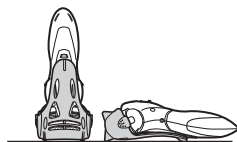
D 便携架

- E 清洁刷
- F 润滑油

使用便携架

剃须刀可垂直或水平放置。携带剃须刀时，可用便携架保护外刀网并防止开关误操作。

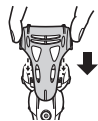
- 携带剃须刀时，请务必在安装便携架前清除胡须碎屑。



安装便携架

如图所示安装便携架。

- 确保剃须刀上的所有四个凸起均已稳妥插入。



拆卸便携架

按下两侧的同时拆卸便携架。



充电

充电

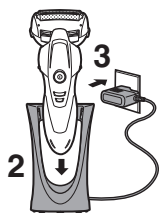
可在装有便携架的情况下给剃须刀充电。

1 将电源线插头插入底座插孔。



2 如图所示，将剃须刀插入充电底座直至听到“咔嗒”的到位声。

- 只有侧面端子和充电端子接触时剃须刀才会充电。
- 擦干本体侧面端子上的水滴。



3 将适配器插入家用电源插座。

- 确认充电状态指示灯已经亮起。
- 约 1 小时，即可完成充电。

4 完成充电后应断开适配器连接。

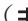
- 给电池充电 1 小时以上不会影响电池性能。

充电过程中无法操作剃须刀。

充电时阅读指示灯

充电时





充电状态指示灯
() 发亮。

充电完成后



所有指示灯均熄灭。

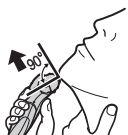
- 建议的充电环境温度是 10 至 35 摄氏度。如果温度过高或过低，充电过程可能更长，电池也可能无法正常充电。
充电故障时充电状态指示灯 () 将会闪烁。
- 购买后初次使用或半年以上未使用过，充电状态指示灯 () 可能不会立即亮，继续充电几分钟后即正常。

剃须

使用剃须刀



- 1** 按下电源开关。 **2** 如上图所示握住剃须刀剃须。



轻轻地压向面部开始剃须。用另一只手绷紧脸上皮肤，逆着胡须生长方向前后移动剃须刀。当皮肤适应剃须刀之后您可以稍稍加大压力，但施加压力过大就可能会造成皮肤伤害。

也可使用握笔方式进行剃须。



注意

- 请在剃须前确保清洁叶窗已关闭。
- 使用剃须刀时不要将手指放在电源开关上。这样会导致剃须刀关闭。
- 请勿使用含有洗涤剂的剃须膏或洁面乳，否则可能会导致外刀网堵塞。

使用修剪刀

将修剪刀操纵杆往上推，以打开修剪刀。将修剪刀放置与皮肤成直角（90度）的位置，然后从上向下移动进行修剪。



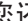
- 使用剃须刀的推荐环境温度范围为 5 至 35 摄氏度。如果使用时温度超出此范围，此剃须刀可能停止运行。

使用时阅读指示灯

电池电量不足时



操作剃须刀时电池电量指示灯（）闪烁。

- 电池电量指示灯（）闪烁后您还可以使用剃须刀 2 到 3 次。（根据时间长短的不同使用次数也会有所不同。）
- 充足电后大约可提供 14 次剃须所需的电量。（以一次剃须 3 分钟计）

清洗

清洗剃须刀

1. 将剃须刀从充电底座上取下。
2. 在外刀网上涂抹少量洗手液和水。
 - 关闭清洁叶窗。
3. 启动剃须刀并向外刀网撒些水。

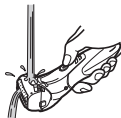


如需清除微量碎须

4. 滑动清洁叶窗，直到听到“咔嗒”一声为止。



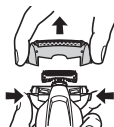
5. 用流动的水清洗外刀部。



6. 关闭剃须刀。
 - 用水冲洗，然后上下晃动几次去除水滴。

针对大量碎须

4. 10 至 20 秒后关闭剃须刀。
5. 按下外刀架释放按钮。取出外刀部并打开剃须刀。



6. 用流动的水清洗剃须刀和外刀部。



- 用水冲洗，然后上下晃动几次去除水滴。

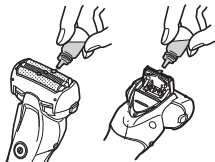
7. 用干布拭去水珠。
8. 将外刀部放在阴凉通风处直至吹干。
• 外刀部若从机身拆下则会干得更快。
9. 将外刀部安装至剃须刀上。
10. 给剃须刀上润滑油。



润滑

为长期保持剃须的舒适度，建议使用附赠的润滑油。

1. 关闭剃须刀电源。
2. 给每个外刀网滴一滴润滑油。
3. 推起修剪刀并滴一滴润滑油。
4. 启动剃须刀电源，运转约 5 秒钟。
5. 关闭剃须刀电源，使用软布将外刀网上多余的润滑油拭去。

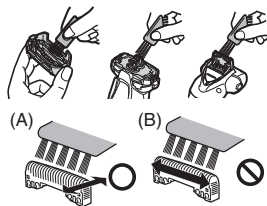


使用清洁刷清洁

使用长刷，清洁外刀网、剃须刀机身和修剪刀。

使用短刷，沿右图所示 (A) 的移动方向移动，清洁内刀头。

- 请勿沿 (B) 方向移动短刷，因为这样将损坏内刀头而影响刀片的锋利度。
- 请勿使用短刷清洁外刀网。



更换外刀网和内刀头

外刀网	每年一次
内刀头	每两年一次

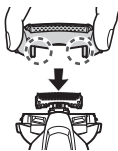
取出外刀部

按下外刀架释放按钮并向上提起取出外刀部。



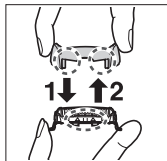
安装外刀部

将入水口面转到前面以后，把外刀部稳固地安装到剃须刀直至其到位。



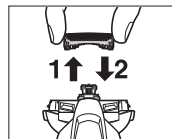
►更换外刀网

1. 按下外刀网释放按钮，拉出外刀网。
2. 对齐入水口面和外刀网 (△) 标识，然后稳固地安装在一起。
 - 外刀网不能反向安装。
 - 安装到剃须刀时，请确保外刀网插入到外刀架内。



►更换内刀头

1. 取下内刀头，一次取一个。
 - 不要触摸内刀头的边沿（金属部分），以防止您的手受伤。
2. 安装内刀头时，一次插入一个内刀头，直至固定位置为止。



►更换部件

更换部件在经销商或 Panasonic 认定维修店有售。

ES-ST23 更换部件	外刀网	WES9087
	内刀头	WES9068

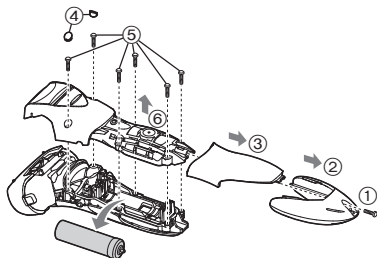
内置式充电电池的取出方式

本产品内藏有充电电池，在消费者决定废弃本产品前，请务必将电池从本产品中取出。

分解本产品，取出电池前，一定要关闭电源。鼓励消费者在决定废弃本产品前，事先征求经销商或 Panasonic 认定维修店的意见，尽量延长本产品的使用寿命。

当消费者决定废弃本产品又不想自行分解本产品取出电池时，鼓励消费者将本产品送往 Panasonic 认定维修店，由维修店对电池进行分解和回收。

- 将剃须刀从充电底座上取下。
- 电池务必废弃于政府规定的地方或回收处理单位。
- 分解的过程中切勿将电池短路。
- 按下图所示的 ① ~ ⑥ 的顺序拆开本产品，卸下电池。



环境保护与资源回收

此剃须刀使用锂电池。

如果您的国家有相关规定，请务必在指定处对旧电池进行统一处理。

规格

产品名称	电动剃须刀
产品型号	ES-ST23
电源适配器额定输入	100-240 V ~ 50-60 Hz 180 mA
电源适配器额定输出	5.4 V --- 1.2 A
充电时间	约 1 小时
原产地	本机：日本 充电底座：中国 电源适配器：中国
生产日期	请见商品上刻印
执行标准	GB4706.1 附录 B GB4706.9

本产品仅适合家庭使用。

Thank you for choosing a Panasonic shaver ES-ST23. With our WET/DRY technology, you can enjoy using your Panasonic shaver dry or in the shower or bath for gentle and easy shaving. Please read all instructions before use.

Important

This shaver has a built-in rechargeable battery. Do not throw into fire, apply heat, or charge, use, or leave in a high temperature environment.

► Before use

This WET/DRY shaver can be used for wet shaving using shaving lather or for dry shaving. You can use this watertight shaver in the shower and clean with water. The following symbol means suitable for use in a bath or shower.



Treat yourself to wet lather shaves for at least three weeks and notice the difference. Your Panasonic WET/DRY shaver requires a little time to get used to because your skin and beard need about a month to adjust to any new shaving method.

► Using the shaver

Caution

The outer foil is very thin and can be damaged if not used correctly. Check that the foil is not damaged before using the shaver. Do not use the shaver if the foil is damaged as you will cut your skin.

- Terminate usage when there is an abnormality or failure.
- Do not use excessive pressure to apply the outer foil to your lip or other part of your face. Do not apply the outer foil directly to blemishes or injured skin.
- Do not share your shaver with your family or other people. Doing so may result in infection or inflammation.
- This appliance is not intended for use by persons (including children) with reduced physical, sensory or mental capabilities, or lack of experience and knowledge, unless they have been given supervision or instruction concerning use of the appliance by a person responsible for their safety. Children should be supervised to ensure that they do not play with the appliance.

► Charging the shaver

- Never use the AC adaptor and the charging stand in the bathroom or shower room.

- Use the dedicated AC adaptor (RE7-59) and the charging stand (RC9-83) only. Do not use them to charge other appliances.
- Plug in the adaptor into a household outlet where there is no moisture and handle it with dry hands.
- Hold the adaptor when disconnecting it from the household outlet. If you tug on the power cord, you may damage it.
- The supply cord cannot be replaced. If the cord is damaged, the AC adaptor should be scrapped.

► **Cleaning the shaver**

Warning

Remove the shaver from the charging stand before cleaning it in water to prevent electric shock.

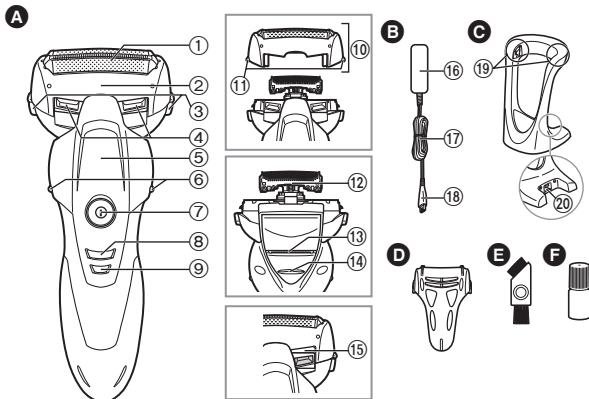
- Keep both the inner blades inserted. If only one of the inner blades is inserted, the shaver may be damaged.
- If you clean the shaver with water, do not use salt water or hot water. Do not soak the shaver in water for a long period of time.
- Clean the housing only with a soft cloth slightly dampened with tap water or soapy tap water. Do not use thinner, benzine, alcohol or other chemicals.
- Do not wash the AC adaptor and the charging stand with water.

► **Storing the shaver**

- When storing the shaver, always put it in the carrying holder to avoid scratching the outer foil.

- Store the shaver in a place with low humidity after use.
- Do not store the shaver where it will be exposed to direct sunlight or other heat sources.
- Disconnect the adaptor when storing the shaver.
- Do not bend the power cord or wrap it around the adaptor and the charging stand.
- Keep the oil away from children.
- Please properly store or dispose the plastic bag of the appliance to avoid any accidents, such as infants suffocation, etc. Keep the plastic bag away from infants.

Parts identification



A Main body

- ① System outer foil
- ② Foil frame
- ③ Foil frame release buttons
- ④ Cleaning shutter
- ⑤ Finger rest
- ⑥ Side terminals
- ⑦ Power switch
- ⑧ Battery capacity lamp
- ⑨ Charge status lamp

⑩ Outer foil section

- ⑪ System outer foil release buttons

⑫ Inner blades

- ⑬ Trimmer
- ⑭ Trimmer handle
- ⑮ Water inlet

B AC adaptor (RE7-59)

- ⑯ Adaptor
- ⑰ Power cord
- ⑱ Appliance plug

C Charging stand (RC9-83)

- ⑲ Charging terminals
- ⑳ Stand socket

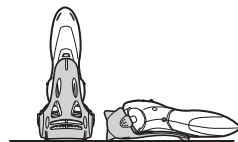
D Carrying holder

- E Cleaning brush
- F Oil

Using the carrying holder

The shaver can be kept vertically or horizontally. When transporting the shaver, you can use the carrying holder to protect the outer foil and prevent erroneous operation of the switch.

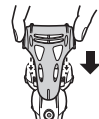
- When transporting the shaver, be sure to clean off any shavings before attaching the carrying holder.



Attaching the carrying holder

Attach the carrying holder as illustrated.

- Check that all four protrusions on the shaver are inserted securely.



Removing the carrying holder

Remove the carrying holder while pressing down on both sides.

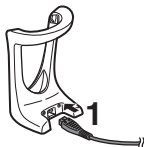


Charge

Charging the shaver

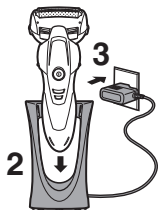
You can charge the shaver with the carrying holder attached.

1 Insert the appliance plug into the stand socket.



2 Insert the shaver in the charging stand until it clicks as illustrated.

- The shaver will not charge unless the side terminals are in contact with the charging terminals.
- Wipe off any water droplets on the side terminals.



3 Plug in the adaptor into a household outlet.

- Check that the charge status lamp glows.
- Charging is completed after approx. 1 hour.

4 Disconnect the adaptor after charging is completed.

- Charging the battery for more than 1 hour will not affect battery performance.

You cannot operate the shaver while charging.

Reading lamps when charging

While charging



The charge status lamp (→) glows.

After charging is completed



All lamps turn off.

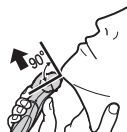
- Recommended ambient temperature for charging is 10 - 35 °C. It may take longer to charge or the battery may fail to charge properly in extremely high or low temperatures.
The charge status lamp (→) will blink when there is a problem with charging.
- When charging the shaver for the first time or when it has not been in use for more than 6 months, the charge status lamp (→) may not glow. It will eventually glow if kept connected.

Shave

Using the shaver



1 Press the power switch.



2 Hold the shaver as illustrated above and shave.

Start shaving by applying gentle pressure to your face. Stretch your skin with your free hand and move the shaver back and forth in the direction of your beard. You may gently increase the amount of pressure as your skin becomes accustomed to this shaver. Applying excessive pressure does not provide a closer shave.

You can also use a pen grip to hold the shaver.



Caution

- Before shaving, check that the cleaning shutter is closed.
- Do not place your fingers on the power switch while using the shaver. This may cause the shaver to turn off.
- Do not use shaving creams or face cleansers containing scrubbing compounds as these may cause the outer foil to clog.

Using the trimmer

Slide the trimmer handle up. Place at a right angle to your skin and move downwards to trim your sideburns.



- We recommend using the shaver in an ambient temperature range of 5 - 35 °C. If used outside this range, the appliance may stop operating.

Reading lamps when using

When the battery capacity is low



The battery capacity lamp (☐) blinks when operating the shaver.

- You can shave 2 to 3 times after the battery capacity lamp (☐) blinks (This will differ depending on usage.)
- A full charge will supply enough power for approx. 14 shaves of 3 minutes each.

Clean

Cleaning the shaver

1. Remove the shaver from the charging stand.
2. Apply some hand soap and some water to the outer foil.
3. Turn the shaver on.

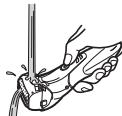


To remove light dirt

4. Slide the cleaning shutter until it clicks.



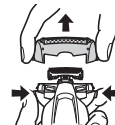
5. Clean the outer foil section with running water.



6. Turn the shaver off.
 - Rinse with water and shake up and down several times to remove the water.

For heavy dirt

4. Turn the shaver off after 10 - 20 seconds.
5. Remove the outer foil section and turn the shaver on.



6. Clean the shaver and the outer foil section with running water.



- Rinse with water and shake up and down several times to remove the water.

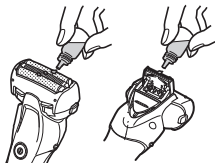
7. Wipe off any drops of water with a dry cloth.
8. Dry the outer foil section and the shaver completely in a shaded area.
 - The outer foil section will dry faster if removed from the main body.
9. Attach the outer foil section to the shaver.
10. Lubricate the shaver.



Lubrication

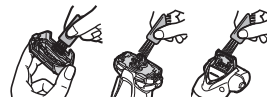
To maintain shaving comfort for a long time, it is recommended that the oil provided with the shaver is used.

1. Switch off the shaver.
2. Apply one drop of oil to each of the outer foils.
3. Raise the trimmer and apply a drop of oil.
4. Switch the shaver on, and run it for approximately five seconds.
5. Switch off the shaver, and wipe off any excess oil from the outer foils with a soft cloth.

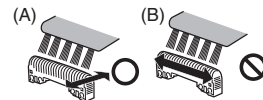


Cleaning with the brush

Clean the system outer foil, the shaver body and the trimmer using the long brush.



Clean the inner blades using the short brush by moving it in direction (A).



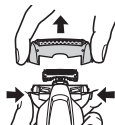
- Do not move the short brush in direction (B) as it will damage the inner blades and affect their sharpness.
- Do not use the short brush to clean the outer foils.

Replacing the system outer foil and the inner blades

system outer foil	once every year
inner blades	once every two years

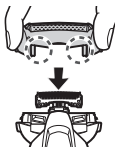
Removing the outer foil section

Press the Foil frame release buttons and lift the outer foil section upwards.



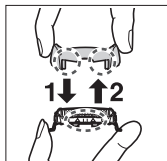
Attaching the outer foil section

After turning the water inlet surface to the front, securely attach the outer foil section to the shaver until it clicks.



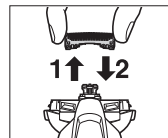
► Replacing the system outer foil

1. Press the system outer foil release buttons and pull down the system outer foil.
2. Align the water inlet surface and the system outer foil mark (△) and securely attach together.
 - The system outer foil cannot be reversely attached.
 - Always insert the system outer foil to the foil frame when attaching to the shaver.



► Replacing the inner blades

1. Remove the inner blades one at a time.
 - Do not touch the edges (metal parts) of the inner blades to prevent injury to your hand.
2. Insert the inner blades one at a time until they click.



► Replacement parts

Replacement parts are available at your dealer or Service Center.

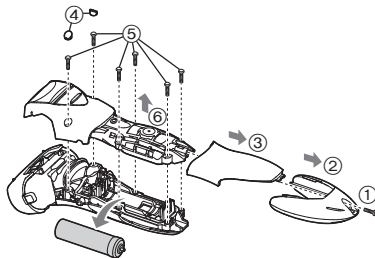
Replacement parts for ES-ST23	System outer foil	WES9087
	Inner blades	WES9068

Removing the built-in rechargeable battery

Remove the built-in rechargeable battery before disposing of the shaver. Please make sure that the battery is disposed of at an officially designated location if there is one. Do not dismantle or replace the battery so that you can use the shaver again. This could cause fire or an electric shock.

Please contact an authorised service center.

- Remove the shaver from the charging stand.
- Please take care not to short-circuit the battery.
- Perform steps ① to ⑥ and lift the battery, and then remove it.



For environmental protection and recycling of materials

This shaver contains a Lithium-ion battery. Please make sure that the battery is disposed of at an officially assigned location, if there is one in your country.

Specifications

Product name	Rechargeable Shaver
Product model	ES-ST23
Rated input	100-240 V ~ 50-60 Hz 180 mA
Rated output	5.4 V = 1.2 A
Charging time	Approx. 1 hour
Place of origin	Main body: Japan Charging stand: China AC adaptor: China
Date of production	See engraving on the commodity.
Execution standard	GB4706.1 appendix B GB4706.9

This product is intended for household use only.

制造商：松下电器产业株式会社
日本大阪府门真市大字门真1006番地
进口商：松下电器(中国)有限公司
北京市朝阳区景华南街5号 远洋光华中心C座 3层、6层
原产地：日本（本机），中国（充电底座、电源适配器）